



YOUNG WOMAN WITH VIOLIN—Randall Davey

31st Annual Exhibition

Painters and Sculptors of the Southwest

August 1 to September 15, 1944

Santa Fe, New Mexico

School of American Research

Museum of New Mexico

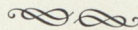
Price 10 cents

Beginning the Fourth Decade

DESPITE the war, the beginning of the fourth decade of the Annual Exhibitions of Painters and Sculptors of the Southwest marks a period of new impetus in art of the region. Nineteen hundred forty-four has seen the growth of a new organization of Santa Fe artists; fresh talent, widely discussed, has appeared in the state; and, in some instances, Southwestern artists with the military services in other lands and in training camps at home are painting lasting pictures of the world conflict.

The Annual Southwestern exhibition was held first in the Palace of the Governors, in 1914. It moved to the present art gallery in 1917 as a dedicatory show for the new building, where it has continued without interruption. It is perhaps worthy of mention that the building of the art gallery coincided with the early gathering of the Taos and Santa Fe art groups, and the Museum has constantly maintained an active interest in the development of Southwestern art.

The general open-door policy that has been consistently followed by the Museum applies likewise to the Southwestern Annual. It is a non-jury show, and any recognized artist working in the Southwest may enter his work, either one or two examples, subject only to arrangement by the hanging committee within the limits of available space. Selections of paintings for illustration in this catalog are made by the Museum on a basis of variety of styles of painting and subject matter, rather than as examples of art singled out for special distinction.



Hanging Committee

FREMONT ELLIS
PAUL ROHLAND

HOWARD B. SCHLEETER
AGNES TAIT

JOHN YOUNG-HUNTER

(Regarding Prices, Inquire at Desk)

Catalog of the Exhibition

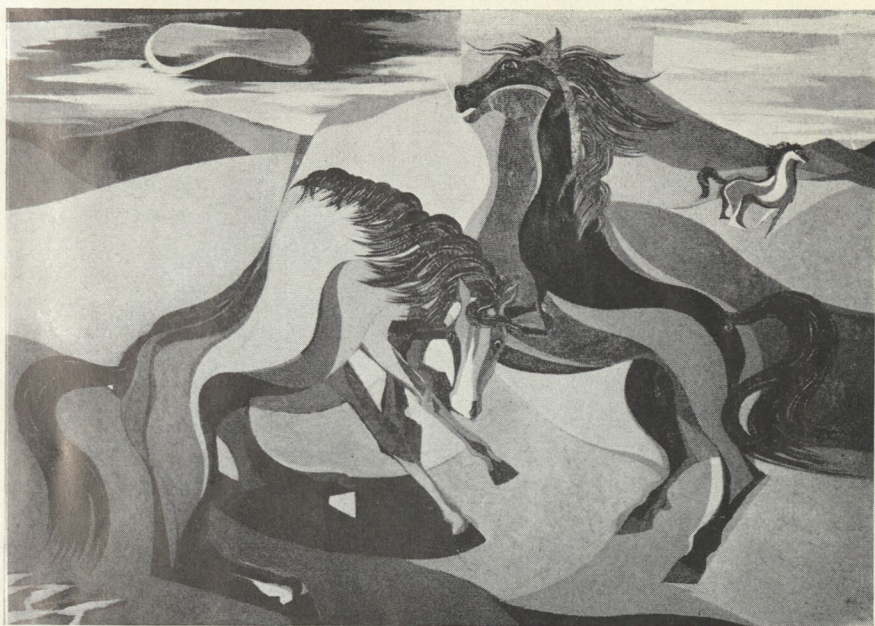
- ALEXANDER, VIRGINIA
1. Taxco (*Oil on Paper*)
- AUW, EMILIE von
2. "Hill 66" (*Water Color*)
- BAKOS, JOZEF
3. Christmas Day
4. Bulls
- BAKOS, TERESA
5. Sun Flower
- BAMBROOK, WALTER
6. Temple Rock
- BARILE, XAVIER J.
7. Reflection
8. Composition (*Monotype*)
- BARN, GEORGE
9. Domingo Church
- BAUMANN, GUSTAVE
10. Overmantel Decoration
11. Gourd Flowers 1 and 2
- BERNINGHAUS, CHARLES
12. Fall Along Ranchito Stream
- BISTTRAM, EMIL
13. Pulsation
- BLUMENSCHNEIN, ERNEST L.
13a. The Lone Fisherman
- BLUMENSCHNEIN, HELEN G.
13b. Rio Chiquito
- BOPES, W. HOWARD
14. The Steelworker
- BOSS, HOMER
15. Landscape
- BOSS, SUZANNE K.
16. Desert Rhythms
- BOYD, E.
17. Water Color
- BRETT, DOROTHY
18. Portrait of Stokowski
- BROESKE, HELLA
19. Iglesia, Mora, New Mexico
20. Study in Mood—Pensive
- BURGESS, WESCOTT
21. Winter Landscape
22. Dynamic Snowstorm
- BURLEIGH, HELEN L.
23. Desert
- BUTLER, ALBAN B.
24. Illustrations for Wells' History
- CALVIN, RUTH G.
25. Mountains
- CARSON, STANLEY
26. The Malpais
- CASSIDY, INA SIZER
27. Travel Sketches (*Water Color*)
28. Mother and Child (*Wood*)
- CASSIDY, REV. WALTER E.
29. Head of Christ (*Wood*)
- CHENEY, ROGER
30. Corral
31. Louise
- CHENEY, RUSSELL
32. Santa Fe Mountain
- CHIU, TENG
33. Lower Manhattan
- CHRISMAN, TINY
34. Home on the Range
35. Bucking Bronco
- CONNELL, MAY K.
36. Bear Cubs (*Pen and Ink*)
- CRAMER, DORA
37. Little Church in the Canyon
- CULBERT, CAROLINE PICKARD
38. Cliffs of Puye
39. Lady of the White Mantilla
- CURTIS, ROSA M.
40. Shiprock
41. Monument Valley, Utah
- DASBURG, ANDREW
42. Autumn Fruit
- DAVEY, RANDALL
43. Young Woman with Violin
44. Semi-nude
- DEGEN, MABEL H.
45. Portrait of Mitzi Korn
46. Taxco Market
- DENNISTON, DOUGLAS
47. New Mexico Nocturne
48. George Ann (*Sculpture*)
- DOBBAL, IVA
49. Autumn Foliage
- DONNE, FRANCESCA DELLE
50. The Rooky's Commando



A LONG WINTER—Lloyd Moylan
435W

Museum Navajo Ceremonial
art -

- DOUGLASS, RALPH
51. The Bath
- DUFFIELD, MARGARET
52. Two Indians
- ELLIS, FREMONT
53. San Juan del Rio, Mexico
- EMERY, IRENE
54. Drums (*Wool*)
- EWING, LOUIE H.
55. Valley Landscape
- EWING, MARRIE
56. Canada de los Alamos
- FARNAN, MARIAN
57. Cristo Rey (*Water Color*)
- FARR, HELEN
58. City Life
59. Transportation
- FARRELLY, CATHERINE
60. Composition 1—Farmhouses
61. Composition 2—Barranco
- FERDON, PATRICIA
62. Come Unto Me
- FORSYTH, VICTOR DUNCAN
63. Ultimately
64. Still Life in Blue
- FRY, JUNE FOSTER
65. Evidence of Things to Come
- FRY, MARY L. FINLEY
66. Mountains of Our Land
- GALT, MADELEINE
67. Pastel
68. Landscape
- GARLAND, MARIE T.
69. Pastel
- GARMAN
70. Painting No. 312
- GEIS, CAROL
71. Tunjo, the Black Mesa
72. Hills of Santa Clara
- HAGMAN, CHARLES
73. Flowers
- HAGMAN, MEL A.
74. La Loma
75. Teresa (*Pastel*)
- HALL, ARTHUR W.
76. Shepherders (*Drypoint*)
77. A Pond at Severy (*Drypoint*)



FROLICKING HORSES—John Skolle

HALL, JEWELL

78. Rocky Mountain Cabin

HALL, NORMA BASSETT

79. Ship Rock

80. Laguna Pueblo

HARVEY, LAURA CORNELL

81. Roundhouse

HAUKINS, ABRAHAM P.

82. A Santa Fe Back Yard
(Egg Tempera)

83. Petty-Bourgeois (Egg Tempera)

HAYAKAWA, MIKI

84. Hermana y Hermano

HIGGINS, VICTOR

85. Spring (Water Color)

HIGGS, ROBERT

86. Cottonwood Grove

HILER, HILAIRE

87. Study in Blue-Violet Tints

HULL, CLEMENT M.

88. Study of Head (Ceramic)

HULLENKREMER, ODON

89. The Old Fiddler

90. Contented

HUNTER, R. VERNON

91. Crater

HYATT, FOSTER H.

92. Navahos

93. The Bloomin' Yucca

IMHOFF, JOSEPH A.

94. Portrait of a Taos Indian
(Water Color)

JAMES, REBECCA S.

95. Taos Tom A-Hunting

JEWELL, FOSTER

96. Abstraction

97. Cat

JOHNSON, ARIEL

98. Still Life Study (Water Color)

JOHNSTONE, ELLEN

99. Landscape

JONSON, RAYMOND

100. Water Color No. 19—1944

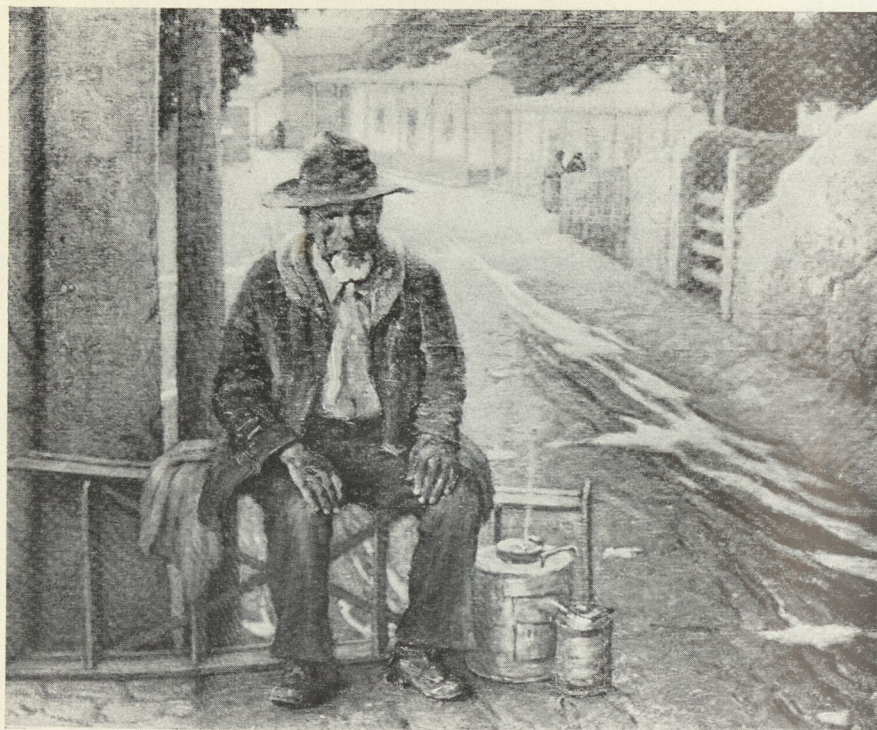
101. Water Color No. 1—1943

KIKER, VESTA A.

102. The Colorful Season

KLOSS, GENE

103. Storm Over Lobo



THE LAMPLIGHTER—J. H. Sharp

KOTCHOUKOVA, OLGA

104. Violets in Paris

LANE, NANCY

105. Mirado in Taos (*Drawing*)

106. Trees in Snowstorm (*Drawing*)

LARSEN, MAE S.

107. Rio en Medio

LARSSON, KARL

108. Jenney

LINDHARDT, DAGMAR B.

109. Poplars

LIZER, HARLAN D.

110. Perennial Quest

111. Interior

LOEFFLER, UNDINE

112. Water Color

LORIE, HORTENSE PLAUT

113. On the Alameda (*Water Color*)

LOWY, ROYAL

114. New England Landscape

115. Hudson River Valley

LUMPKINS, JANETTE WILLIS

116. Interior with Figure

LUMPKINS, LT. WILLIAM

117. Mescalero Dance (*Water Color*)

118. Ready for Night Flight
(*Water Color*)

MCCROSSEN, PRESTON

119. Miki

McMEANS, NINA FRANCES

120. Roses

McNAMEE, DOROTHY

121. Mending the Nets

(*Water Color*)

122. Poppies (*Water Color*)

MANDELMAN, BEATRICE

123. White Church (*Silk Screen*)

MAPLES, TRAVIS N.

124. Cierra Blanca

MARKS, TUDOR

125. Church at Santa Cruz



FALL ALONG RANCHITO STREAM—*Charles Berninghaus*

MARTIN, MAUD

- 126. Illustration (*Water Color*)
- 127. Illustration (*Water Color*)

MAXWELL, TERRY

- 128. Oil Painting
- 129. Oil Painting

MEAD, RODERICK F.

- 130. Bal Masque

MEGARGEE, LON

- 131. No. 1
- 132. No. 2

MENAGER, PIERRE

- 133. Caliente
- 134. Indian (*Sculpture*)

MODJESKA, MARYLKA

- 135. From Under the Wharf

MORANG, ALFRED

- 136. Central Avenue Hot Spot
- 137. New Mexico Landscape

MORANG, DOROTHY

- 138. Oil Painting No. 4, 1944

MOYLAN, LLOYD

- 139. A Long Winter

MURPHEY, MIMI

- 140. "Tristeza" (*Wood*)

MUSGRAVE, ARTHUR E.

- 141. Santa Fe Garden (*Gauche*)
- 142. Hollyhocks (*Gauche*)

MYERS, ALICE

- 143. Three Bowls (*Ceramic*)

MYERS, DATUS

- 144. Portrait

NAUMER, HELMUTH

- 145. Rainy Season (*Water Color*)

NESS, CARL E.

- 146. "The Last Longliner"

O'HARA, FREDERICK

- 147. Navajo Women

PEARCE, HELEN S.

- 148. Santa Fe Arroyo

PERRY, CORA

- 149. Texas Bluebonnets

PINNINGTON, JANE

- 150. Magnolia

- POTTER, BERTHA HERBERT
151. Procession to Cross
152. Dark Vision
- RAY, DICK
153. De Vargas Coat of Arms
- READ, THEODORE H.
154. After the Storm
- REDFIELD, SIDNEY C.
155. Along the Macho (*Water Color*)
156. Landscape (*Pencil*)
- REED, JOE D.
157. The Girl in Pink
158. Sketch of Brown-eyed Girl
- RIBAK, LOUIS
159. Soldiers at Play, Ft. McClellan
- ROHLAND, CAROLINE SPEAR
160. The Mother's Prayer
- ROHLAND, PAUL
161. Houses & Mountains—Santa Fe
- RUSH, OLIVE
162. Indian Women
163. Parisioners (*Water Color*)
- SALAZAR, MARIA
164. Shrine of Santa Rita
165. Evening
- SCHLEETER, HOWARD B.
166. White Belfry
167. Earth Glow (*Water Color*)
- SCHMIDT, ALBERT
168. Landscape
- SETON, ERNEST THOMPSON
169. Whitetail Family
170. Danger Afar
- SHANNON, AILLEN
171. Mother and Child
172. Judy Stevens
- SHARP, J. H.
173. The Lamplighter
- SHONNARD, EUGENIE
174. French Peasant (*Terra Cotta*)
175. Tesuque (*Water Color*)
- SHUPP, ALICE C.
176. Flowering Sage
177. Basket Weaver
- SHUSTER, WILL
178. The Little Bride
179. Susanna and the Elders
- SKOLLE, JOHN
180. Frolicking Horses
- SLOAN, JOHN
181. Willows at Cienega
182. Nude, Winter
- SPRINGER, EVA
183. Case of Miniatures
184. Spring Flowers
- STEVENS, ROSALIE
185. Characterization
- STEWART, DOROTHY N.
186. Arroyo in Winter
- STOCKTON, PANSY
187. Hyde Park (*Sun Painting*)
188. Hi! (*Water Color*)
- STULL, ANNA
189. Felis Casa
- SWERINGEN, NORMA V. van
190. Portrait Sketch
191. Near the Fishing Hole
- TAIT, AGNES
192. Figure in Landscape
- TURNER, ILA McAFEE
193. Sage Meditations
- VAN SOELEN, THEODORE
194. Composition
- VOS, THOMAS
195. Courtyard Scene
196. Road to the Pueblo
- WALLACE, JOHN L.
197. Madonna (*Ceramic*)
- WALLACE, VIRGINIA B.
198. Adalita
- WARDER, PVT. WILLIE
199. New Mexico Abstraction
200. Autumn in Illinois
- WELLS, CADY
201. Water Color
- WENIGER, MARIE
202. Sculpture