

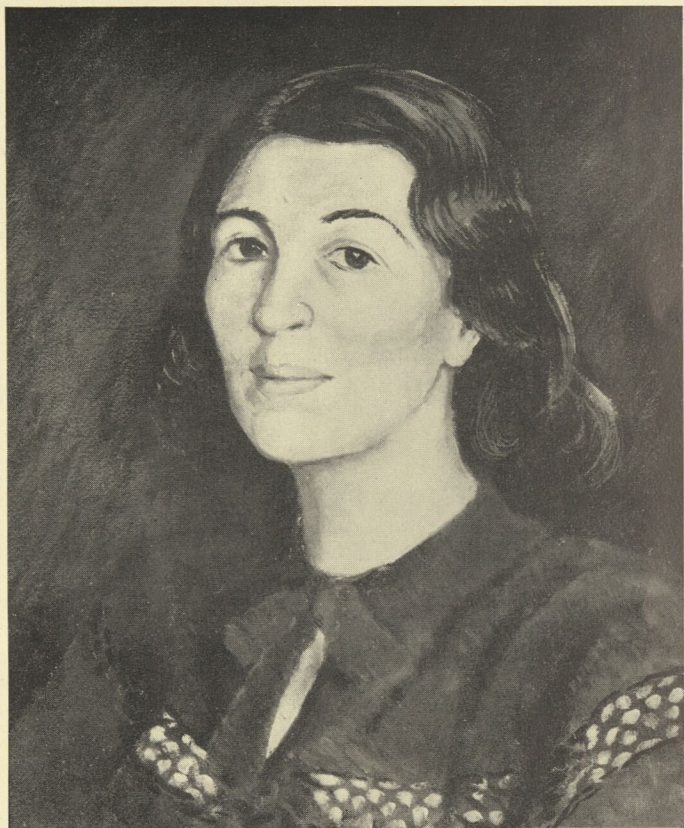
DEER RUNNING — *Olive Rush*

TWENTY-SIXTH ANNUAL EXHIBITION
OF PAINTERS AND SCULPTORS
OF THE SOUTHWEST

September 1 to 30, 1939

SCHOOL OF AMERICAN RESEARCH
MUSEUM OF NEW MEXICO
Santa Fe, New Mexico

Price 10 cents



"SAMI" — *Will Shuster*

CATALOGUE OF THE EXHIBITION



- AUSTIN, GEORGE (Albuquerque)
 1. *The Stampede*
 2. *A Pioneer Daughter*
- AYERS, MRS. BEULAH (Texas)
 3. *Portrait*
 4. *Old Trees in Santa Fe*
- BAKOS, JOZEF (Santa Fe)
 5. *Nativity*
 6. *Chant*
- BAKOS, TERESA (Santa Fe)
 7. *Study*
- BALINK, HENRY C. (Santa Fe)
 8. *The War Drummer*
- BARROWS, CHARLES (Santa Fe)
 9. *Penitentes*
 10. *Trees and Houses*
- BAUMANN, GUSTAVE (Santa Fe)
 11. *Block Prints (A and B)*
 12. *Gourd Sculpture*
- BELLOLI, GIORGIO (Santa Fe)
 13. *Tanagra-"Adagio"-Terra Cotta*
 14. *Tanagra-"Andante"-Terra Cotta*
- BELLOLI, YOLANDE (Santa Fe)
 15. *San Cristobal Rain*
 16. *Wind*
- BERNINGHAUS, J. CHARLES (Taos)
 17. *Flowers*
 18. *New Mexico Landscape*
- BINKLEY, BETTIE (Santa Fe)
 19. *Annie Loury*
- BLODGETT, GEORGE (Santa Fe)
 20. *Sculpture*
- BLUMENSCHNEIN, E. L. (Taos)
 21. *"Pedro"*
- BLUMENSCHNEIN, HELEN (Taos)
 22. *Self Portrait*
- BOSS, SUZANNE (Santa Cruz)
 23. *Water Color*
 24. *Drawing*
- BROESKE, HELENA (Las Vegas)
 25. *Portrait-Urho Pietari*
 26. *Mesa Vista*
- BOSS, SIMON (Santa Cruz)
 27. *Water Color*
 28. *Drawing*
- BURKE, VIRGINIA (Albuquerque)
 29. *Jane the Girl from New Mexico*
- BUSH, MAURINE (Taos)
 30. *Leaves*
- CALVIN, MRS. RUTH G. (Santa Fe)
 31. *Water Color*
 32. *Water Color*
- CANNON, JO (Santa Fe)
 32. *Adobe Houses*
 34. *Adobe Houses*
- CHEETHAM, MRS. E. E. (Taos)
 35. *Zinnias*
- COLBY, MADELON (Albuquerque)
 36. *Nude*
 37. *Portrait*
- COOKE, REGINA TATUM (Taos)
 38. *Morning on the Loma*
- CROW, MISS LOUISE (Santa Fe)
 39. *Alice*
 40. *Three Nudes*
- CRUMBO, WOODROW (Taos)
 41. *Indian Painting*
- DAVENPORT, Mc HARG (Santa Fe)
 42. *Bull Hell*
 43. *Unfinished Phyllis*
- DAVEY, RANDALL (Santa Fe)
 44. *Nude*
- DIEMAN, CLARE (Pennsylvania)
 45. *Juniper Rhythms*
 46. *Abstraction*
- DOUGLASS, RALPH (Albuquerque)
 47. *Taos Indian*
 48. *Juanita*
- ELLIS, FREMONT (Santa Fe)
 49. *Mountain Tops*
 50. *Heading for the Rain*
- EMERY, IRENE (Michigan)
 51. *Summer*
- EULER, MRS. ESTHER (Santa Fe)
 52. *Mendicant*
- EWING, LOUIS (Santa Fe)
 53. *Buffalo Dance*
 54. *On Hillside*
- EWING, MRS. LOUIS (Santa Fe)
 55. *Arroyo*
- FERDON, PATRICIA (Ohio)
 56. *Little Indian Dancer*
 57. *Pueblo Indian*

- FIERLEIN, ELIZABETH (Santa Fe)
 58. *Rain*
- FLECK, JOSEPH (Taos)
 59. *Winter in Taos*
 60. *Sagebrush and Indian*
- GRAHAM, FRANK E. B. (Santa Fe)
 61. *Toytown*
 62. *Sunmount, Santa Fe*
- HARRIS, LAWREN (Santa Fe)
 63. *Composition Number Ten*
- HENNINGS, E. MARTIN (Taos)
 64. *Passing from the Canyon*
- HULL, CLEM (Tesuque)
 65. *Oil Nonobjective*
 66. *Abstract Nude (ceramic figurine)*
- HULLENKREMER, ODON (Santa Fe)
 67. *Indian Lily Jacke*
 68. *Rosy*
- HUNTER, VERNON (Santa Fe)
 69. *Rainbow in the Evening*
- IMHOF, JOSEPH (Taos)
 70. *Taos Types*
 71. *Taos Girl*
- JAMES, REBECCA (Taos)
 72. *Painting on Glass*
- JONSON, RAYMOND (Santa Fe)
 73. *Synthesis Seven*
- KAPLAN, NAT (Santa Fe)
 74. *Etchings (A and B)*
 75. *Masks (A and B)*
- KEEFER-BOATRIGHT, ELIZABETH
 (Texas)
 76. *"Hog Killin' Time"*
- KENNEDY, MARTHA (Melrose)
 77. *White Roses*
 78. *Melrose Federal Art Center*
- KIKER, STELLA (Taos)
 79. *Landscape*
- KIKER, VESTA (Raton)
 80. *Aspen Pastures*
 81. *Water Color*
- KLOSS, GENE (Taos)
 82. *Down from the Hills*
 83. *Horizontals*
- KNEE, GINA (Tesuque)
 84. *Red Valley*
 85. *New Mexican Landscape*
- LANTZ, PAUL (Santa Fe)
 86. *Taxco*
 87. *Monterrey*
- LOEFFLER, GISELLA (Los Griegos)
 88. *Water-color*
- LUJAN, MRS. MARINA (Santa Fe)
 89. *Black Forest*
 90. *Buffalo Hunt*
- LUGUBIHL, PATRICIA (Santa Fe)
 91. *Portrait*
 92. *Statuette*
- MABRY, MRS. JANE R. (Roswell)
 93. *Michele*
 94. *Along the Canal*
- McAFEE, ILA (Taos)
 95. *Buenos Dias*
- MORANG, ALFRED (Santa Fe)
 96. *Landscape with Red Roof*
 97. *Trees in Sunlight*
- MORANG, DOROTHY (Santa Fe)
 98. *Forms in Grey Space*
 99. *Abstract Painting Number One*
- MORRIS, JAMES (Santa Fe)
 100. *Valorio de los Manitos*
 101. *Saturday Nite Bottle*
- MYERS, DATUS (Santa Fe)
 102. *Sunflowers*
- NAUMER, HELMUTH (Santa Fe)
 103. *Ortiz*
 104. *Ortiz Mountains*
- NEEDHAM, MRS. HELEN (Santa Fe)
 105. *Portrait*
- NORDFELD, B. J. O. (Santa Fe)
 106. *Painting*
 107. *Subway*
- PARSON, SHELDON (Santa Fe)
 108. *Passing Storm*
 109. *Chamisa - October*
- PIERCE, EDNA (Melrose)
 110. *Desert's Edge*
 111. *Taos Desert*
- PILLIN, MRS. POLIA (Santa Fe)
 112. *Cerrillos*
 113. *Fields*
- POOL, EUGENIA POPE (Texas)
 114. *Cathedral Spire, Cuernavaca,
 Mexico*
115. *Dahlias*
- POP CHALEE (See Marina Lujan)
- RENEHAN, VIVIAN SLOAN (Santa Fe)
 116. *A Fishing Picnic*
- ROCA, MRS. STELLA M. (Arizona)
 117. *Arizona Mountains*
 118. *Desert Springtime*
- ROGERS, CHARLES S. (Kansas)
 119. *Coronado Heights*
 120. *Kansas Landscape*

we - or find them



TAXCO — Paul Lantz

- | | |
|-----------------------------------|---|
| ROYBAL, ERNEST (Santa Fe) | SHEPPARD, CRAIG (Taos) |
| 121. <i>Church and Hills</i> | 132. <i>Water Color</i> |
| RUSH, OLIVE (Santa Fe) | 133. <i>Water Color</i> |
| 122. <i>Deer Running</i> | SHUPP, MRS. ALICE (Las Vegas) |
| 123. <i>Stampede of the Kudus</i> | 134. <i>Apple Blossoms</i> |
| RUDHYAR, DANE (Santa Fe) | 135. <i>Indian Paint Brush</i> |
| 124. <i>The Pilgrim</i> | SHUSTER, WILL (Santa Fe) |
| SALAZAR, MRS. MARY (Santa Fe) | 136. <i>Sami</i> |
| 125. <i>Vista</i> | SINEL, GENEVIEVE (Santa Fe) |
| 126. <i>Before the Storm</i> | 137. <i>Rocks in Cienega</i> |
| SANFORD, M. THOMAS (Taos) | 138. <i>Valley in Cienega</i> |
| 127. <i>Ramona</i> | SIZER, GRAEME (Santa Fe) |
| 128. <i>Two Boys</i> | 139. <i>Sun Bath</i> |
| SCHMIDT, ALBERT H. (Tesuque) | SKELLY, MRS. ALTA (Santa Fe) |
| 129. <i>Coming Storm</i> | 140. <i>Spring in the Valley</i> |
| SHANNON, AILEEN (Las Cruces) | 141. <i>Cuttings</i> |
| 130. <i>Group Portrait</i> | SLOAN, JOHN (Santa Fe) |
| SHARP J. H. (Taos) | 142. <i>Evening, Camino del Monte Sol</i> |
| 131. <i>Red River Road</i> | |

use this in
Pine Tree



COMING STORM — *Albert Schmidt*

- STEDMAN, MYRTLE (Tesuque)
143. *In the Valley*
- STEDMAN, WILFRED (Tesuque)
144. *Estevan the Moor*
145. *Don Francisco Vasquez de Coronado*
- STOCKTON, PANSY (Colorado)
146. *Guard of the Timber Line*
- SWERINGEN, NORMA (Santa Fe)
147. *Sketch*
148. *Sketch*
- STEWART, DOROTHY (Santa Fe)
149. *Landscape*
- THOMPSON, WINIFRED (Albuquerque)
150. *Gladiolus*
151. *Farewell to Summer*
- TURNER, ELMER (Taos)
152. *Looking Skyward*
- VILLARD, DOROTHY LEE (Roswell)
153. *Head of Negro Girl*
- WELLS, CADY (Jacona)
154. *New Mexico Landscape*
155. *Head*
- WHITE, EDNA L. (Colorado)
156. *From a Hilltop*
- WILL, BLANCA (Santa Fe)
157. *Reflection of Forest-1938*
158. *There will be Pie in the Sky*
By and By
- WILLIS, J. R. (Albuquerque)
159. *Village and Fields, Arroyo Hondo*
160. *Portrait, Taos Indian*
- YOUNG-HUNTER, JOHN (Taos)
161. *Storm Clouds*
- KUSIANOVICH, D.
162. *An Apache's Pride*