

40

Annual Exhibition

For New Mexico Artists

th

MUSEUM OF NEW MEXICO
ART GALLERY
Santa Fe

August 2 thru September 13, 1953

On the Cover

THEODORE VAN SOELEN

"COWBOYS CHANGING MOUNTS" *Oil* (143)



MUSEUM OF NEW MEXICO ART GALLERY

COPYRIGHT 1953

MUSEUM OF NEW MEXICO, SANTA FE

ALL RIGHTS RESERVED

1000 COPIES

PRINTED BY SCHIFANI BROTHERS PRINTING CO.

FOREWORD

The 40th Annual

Since 1951 the Annual Exhibition for New Mexico Artists of the Museum of New Mexico has been a selected show, with the works for exhibition chosen—up to the capacity of the Art Gallery—by a Committee on Selections composed of an art professional from outside New Mexico, as Chairman, and a New Mexico artist and New Mexico art layman as members. All resident New Mexico artists are invited to participate in the Exhibition. All media of painting and sculpture, not including graphic arts, are eligible.

For the 40th Annual, selection quotas were set at one hundred fifty paintings and fifty sculptures. One hundred works were chosen from the show for the 1953 State Fair Exhibition in Albuquerque the last week of September. The Selection Committee also chose thirty works from the show for the national traveling exhibition—New Mexico Painting, 1953—during the coming season, and made fifteen recommendations for purchase, which are reproduced in this catalog.

In the purchases for the Museum's collection this year, it was the intent to devote the awards to younger artists who by consistently excellent work had proven themselves worthy of recognition, but who were not represented in the collection. The intention also was to represent a range of styles from the objective to abstract and surrealistic.

The Exhibition this year was selected from a total of three hundred entries, of which twelve were in sculpture. Since this was only one-fourth of the sculpture quota, all twelve entries were placed in the exhibition.

The proportions of the several art styles represented in the Exhibition this year stand close to those for the other two Annuals since conversion to a selected exhibition. A slight trend away from the objective, however, may be noted in the following table of percentages:

STYLE	38th Annual	39th Annual	40th Annual
Objective	60%	51%	51%
Expressionistic	5%	7%	8%
Abstract	21%	22%	27%
Non-objective	3%	5%	6%
Surrealistic	7%	4%	10%
Decorative	4%	5%	4%

As in the past, all works in the Exhibition are for sale and visitors are invited to inquire regarding prices.

REGINALD FISHER
Director of Fine Arts

*Formal Opening With Public Reception
On Sunday Afternoon, August 2nd.*

Museum Women's Board

ACTIVE MEMBERS:

Miss Eva Springer, *President*; Mrs. Wheaton Augur, *Vice President*; Mrs. Albert S. Lathrop, *Secretary*; Mrs. Manuel A. Sanchez, *House Chairman*; Mrs. H. S. A. Alexander, Mrs. Rupert F. Asplund, Mrs. Marguerite P. Baca, Mrs. Gustave Baumann, Mrs. V. E. Berchtold, Mrs. George M. Bloom, Mrs. Norris L. Bradbury, Mrs. Robert O. Brown, Mrs. Gerald Cassidy, Mrs. David Chavez, Jr., Mrs. Charles H. Corlett, Mrs. McHarg Davenport, Mrs. Henry Dendahl, Mrs. C. H. Dietrich, Miss Isabel L. Eckles, Mrs. Eugene W. Fiske, Mrs. Carlos Gilbert, Mrs. Leslie Gillett, Mrs. Charles F. Harley, Mrs. Edgar L. Hewett, Mrs. Eric L. Jette, Mrs. H. S. Kaune, Mrs. Daniel T. Kelly, Mrs. C. J. Kinsolving, Mrs. Boaz Long, Mrs. Cyrus McCormick, Mrs. Edwin L. Mechem, Mrs. John Gaw Meem, Mrs. Frank E. Mera, Mrs. Edward H. Oakley, Mrs. Sterling Rohlf, Mrs. Albert H. Schmidt, Miss May Spitz, Mrs. Theodore Van Soelen, Mrs. Mary R. Van Stone, Mrs. Paul A. F. Walter, Miss Amelia E. White, Mrs. Francis C. Wilson.

Committee on Selections

TOM LEA

2401 Savannah St., El Paso, Tex.

Chairman

PAINTER, ILLUSTRATOR and AUTHOR. STUDIED: Art Institute of Chicago. EXHIBITED: nationally. REPRESENTED: Dallas Museum of Fine Arts; Museum of New Mexico; and with murals in public buildings. Artist and war correspondent for *Life Magazine*, 1941-45. Author and illustrator of: *A Grizzly from the Coral Sea*, 1944; *Peleliu Landing*, 1945; *The Brave Bulls*, 1949; *The Wonderful Country*, 1952. Member of the Commission on Church Art and Ornamentation of the Diocese of New Mexico and Southwest Texas, Episcopal Church.

RANDALL DAVEY

Canyon Road, Santa Fe

PAINTER, PRINT MAKER and TEACHER. Specializes in portraits and race track scenes. STUDIED: Art Students League of New York; Henri School of Painting, N.Y.C. EXHIBITED: nationally. REPRESENTED: in many leading collections, including Encyclopaedia Britannica; Art Institute of Chicago; Corcoran Gallery of Art, Washington, D. C.; Whitney Museum of American Art, N.Y.C.; Museum of New Mexico; and with murals in public buildings. AWARDS: prizes at National Academy of Design, N.Y.C., 1915, 1938, 1939; and others. MEMBER OF: National Academy of Design (Academician); National Association of Portrait Painters. Associate Professor of Art, University of New Mexico.

MORRIS KIGHT

610 12th St., N.W., Albuquerque

Resident of New Mexico since 1946. Prominent art layman. HOTEL, REAL ESTATE and RANCH OWNER. STUDIED: Southern College; Texas Christian University, Fort Worth (B.A.); special study in administrative law, University of Texas. Secretary, New Mexico Art League, 1950-51, 1951-52; President, 1952-53. Member of founding group, New Mexico Art and Science Museum, Albuquerque, 1949; Chairman, Board of Directors, 1951-52, 1952-53. Director of Museum Exhibitions at New Mexico State Fair, 1951, 1952, 1953. Founder of All-Albuquerque Artist exhibitions, annual since 1950. Owner of San Felipe Gallery, Albuquerque.

CATALOG

The Exhibition

- ★ Member of Selection Committee
- ★ Selected for reproduction in catalog with recommendation for purchase
- Selected for national traveling exhibition
- ✕ Selected for State Fair exhibition
- A Represented in permanent collection of Museum of New Mexico Art Gallery
- B Was included in 38th Annual Exhibition
- C Was included in 39th Annual Exhibition
- D Has been included in a national traveling exhibition selected from a past Annual
- E Has been included in a Museum of New Mexico Art Gallery Invitation Exhibition

★✕ Adams, Kenneth M.

(Albuquerque)

A B C D E

1. "Early Morning"
Oil on Canvas 23" x 39"
STYLE: Abstract

Armentrout, Don (Santa Fe)

B

2. "Suzy"
Casein Tempera on Panel
15" x 19"
STYLE: Objective

✕ Artschwager, Richard

(Las Cruces)

C

3. "View West of Shalem Colony"
Oil on Canvas 21" x 27"
STYLE: Abstract

✕ Atwater, Barry (Santa Fe)

B C E

4. "Desert Smoke Tree"
Oil on Canvas 24" x 30"
STYLE: Objective

✕ Atwood, Robert (Santa Fe)

B C

5. "Arizona Spring"
Oil on Canvas 20" x 30"
STYLE: Objective

Bailey, J. Gordon (Santa Fe)

6. "Gotliinahbo No. 2"
Water Color, Oil and Tem-
pera on Panel 29" x 47"
STYLE: Non-objective

•✕ Bakos, Jozef (Santa Fe)

A B C D E

7. "Apple Blossoms"
Water Color 14½" x 20½"
STYLE: Objective

✕ Bakos, Teresa (Santa Fe)

B C E

8. "Fifteenth Century"
Tempera on Panel 20" x 24"
STYLE: Decorative

Baldridge, Cyrus LeRoy

(Santa Fe)

C

9. "January Skyline"
Oil on Canvas 22" x 28"
STYLE: Objective

✕ Baranchik, Rose (Roswell)

10. "Portrait of Husband"
Oil on Panel 25" x 31½"
STYLE: Expressionistic

Barrick, Kenneth R.

(Las Cruces)

B C D E

11. "Family"
Casein Tempera on Panel
24" x 30"
STYLE: Objective

•✕ Barrows, Charles (Santa Fe)

E

12. "Landscape"
Water Color 15½" x 21¼"
STYLE: Objective

•✱ **Baumann, Gustave** (Santa Fe)

A B C D E

- #3500
13. "Western Sycamore"
Oil on Panel 27" x 32½"
STYLE: Decorative

★✱ **Benrimo, Tom** (Taos)

B D E

14. "Tombs"
Oil on Panel 34" x 39"
STYLE: Non-objective

Bidwell, Richard M.

(Los Alamos)

15. "Los Alamos Abstraction"
Oil on Panel 16" x 20"
STYLE: Abstract

✱ **Bistram, Emil** (Taos)

B C E

16. "Epharmony"
Oil on Canvas 40" x 45½"
STYLE: Abstract

✱ **Black, Frederick** (Albuquerque)

C

17. "Mesas at Velarde"
Oil on Canvas 26" x 34"
STYLE: Abstract

✱ **Blumenschein, Ernest L.** (Taos)

A B C D E

18. "Railroad Yards No. 5"
Oil on Canvas 31" x 46"
STYLE: Objective

Blumenschein, Helen G. (Taos)

B C E

19. "Xmas Eve Procession at
Taos Pueblo"
Oil on Canvas 30" x 34"
STYLE: Expressionistic

•✱ **Bopst, Howard** (Santa Fe)

20. "Black Mesa"
Water Color 24" x 30"
STYLE: Objective

Boss, Suzanne K. (Santa Cruz)

B C

21. "Dora Chavez"
Pastel 22½" x 26¼"
STYLE: Objective

Boylan, John (Lincoln)

B C

22. "The Market, San Miguel"
Oil on Canvas 24" x 34"
STYLE: Abstract

Brett, D. E. (Taos)

B C D E

23. "The Women's Dance"
Oil on Panel 32" x 40"
STYLE: Decorative

✱ **Brown, Virginia Parks**

(Los Alamos)

B

24. "A Painting"
Oil on Panel 22" x 28"
STYLE: Abstract

✱ **Cassidy, Ina Sizer** (Santa Fe)

B C

25. "Corn Goddess"
Cast Stone Sculpture 11" high
STYLE: Expressionistic

Cervantez, Pedro L. (Clovis)

B C

26. "Nocturne"
Oil on Panel 16" x 20"
STYLE: Objective

Chalk, Janette (Santa Fe)

E

27. "Seated Nude"
Oil on Canvas 15¼" x 24"
STYLE: Abstract

Chew, Iris (Tucumcari)

B C

28. "A Portrait"
Oil on Panel 27" x 34"
STYLE: Objective

✱ **Civerolo, Evelyn B.**

(Albuquerque)

29. "1st Street, S.E., Albu-
querque"
Water Color 16" x 19½"
STYLE: Abstract

✱ **Cook, Howard** (Taos)

B C D E

30. "Waterfall"
Pastel 30" x 47½"
STYLE: Abstract

✱ **Danfelser, Beth** (Albuquerque)

31. "Fruitscape"
Tempera 17" x 21½"
STYLE: Abstract

★ **Davey, Randall** (Santa Fe)

A B C D E

32. "Girl in a Hunting Cap"
Oil on Panel 20" x 24"
STYLE: Objective

- ✕ **Dieman, Clare** (Santa Fe)
 B C
 33. "Tree Trunk"
 Cast Stone Sculpture 15½"
 high
 STYLE: Abstract
- Dorman, John** (Santa Fe)
 B C E
 34. "Apocalypse, 1953"
 Gouache 30" x 36"
 STYLE: Non-objective
- ✕ **Douglass, Ralph** (Albuquerque)
 B C E
 35. "La Jolla"
 Water Color 19" x 25"
 STYLE: Objective
- Dujardin, Gussie** (Las Vegas)
 C
 36. "One Fruit Remains"
 Oil on Canvas 12" x 30"
 STYLE: Abstract, symbolic
- ★✕ **Egri, Ted** (Taos)
 B C E
 37. "Koshare"
 Oil on Canvas 30" x 40"
 STYLE: Expressionistic
- ✕ **Ellis, Fremont F.** (Santa Fe)
 A B C D E
 38. "The Blue Portal"
 Oil on Canvas 20" x 24"
 STYLE: Objective
- ★✕ **Enlow, Mary Lou** (Albuquerque)
 C E
 39. "Calle de Flores"
 Casein Tempera on Panel
 13" x 19½"
 STYLE: Abstract
- ★✕ **Ewing, Louie H.** (Santa Fe)
 A C E
 40. "Top of Sandia"
 Oil on Panel 16" x 20"
 STYLE: Objective
- ✕ **Ewing, Marrie B.** (Santa Fe)
 A B
 41. "Evening"
 Water Color 12" x 17"
 STYLE: Objective
- Fiske, Vivian Sloan** (Santa Fe)
 B C E
 42. "The Pink Table"
 Oil on Canvas 20" x 24"
 STYLE: Abstract
- ✕ **Fitzpatrick, Joseph**
 (Albuquerque)
 43. "Luminescence"
 Water Color 14" x 18"
 STYLE: Abstract
- ✕ **Fitzpatrick, Opal** (Santa Fe)
 B C
 44. "Cross on the Hill"
 Pastel 16" x 22½"
 STYLE: Objective
- ✕ **Fleck, Joseph A.** (Taos)
 B C D E
 45. "How Green Is Our
 Valley"
 Tempera and Oil on Panel
 30" x 36"
 STYLE: Objective
- ✕ **Forehand, Heber** (High Rolls)
 C
 46. "American"
 Wood Sculpture 13" high
 STYLE: Objective
- ✕ **Fowler, Charlotte** (Santa Fe)
 B C E
 47. "Spring Landscape"
 Oil on Panel 22½" x 28"
 STYLE: Expressionistic
- Fox, Joyce J.** (Santa Fe)
 48. "Plentiful Valley"
 Oil on Panel 16" x 20"
 STYLE: Objective
- Galt, Madeleine** (Santa Fe)
 49. "Pot of Gloxina"
 Oil on Canvas 18" x 24"
 STYLE: Objective
- Ganthiers, Louise** (Taos)
 B C D E
 50. "Thrusts"
 Oil on Panel 22" x 30"
 STYLE: Non-objective
- Gaspard, Leon** (Taos)
 B C E
 51. "Evening in Manchuria"
 Oil on Panel 30" x 36"
 STYLE: Objective
- ✕ **Ghizé, Eleanor de** (Santa Fe)
 C
 52. "Ruin"
 Oil on Panel 21" x 30"
 STYLE: Expressionistic

- ✕ **Gonzales, David R.** (Santa Fe)
 B C
 53. "Santuuario"
 Water Color 20" x 24"
 STYLE: Objective
- ✕ **Grahn, Bill** (Santa Fe)
 C
 54. "Bird Form"
 Wood Sculpture 12" high
 STYLE: Abstract
- ✕ **Greene, Oscar** (Dexter)
 B C
 55. "Music"
 Plaster Sculpture 14" high
 STYLE: Expressionistic
- ✕ **Hagman, Mel A.** (Santa Fe)
 56. "New Mexico Landscape"
 Oil on Canvas 21" x 30"
 STYLE: Objective
- ✕ **Hancock, Betsy** (Santa Fe)
 57. "Sound of the Night"
 Oil on Canvas 24½" x 27"
 STYLE: Objective
- Hanson, Elisabeth** (Las Vegas)
 58. "Raised Eyebrows"
 Oil on Panel 16" x 20"
 STYLE: Objective
- ✕ **Helfensteller, Veronica**
 (Santa Fe)
 B C D E
 59. "Birds"
 Mixed Media 18" x 25"
 STYLE: Abstract Surrealistic
- Hennings, E. Martin** (Taos)
 B C E
 60. "Towering Cottonwood"
 Oil on Canvas 25" x 30"
 STYLE: Objective
- ✕ **Hill, Adelina Ortiz de**
 (Tucumcari)
 B C E
 61. "Fiesta de Antes"
 Oil on Panel 17" x 24"
 STYLE: Objective, decorative
- ★ ✕ **Hook, Walter** (Albuquerque)
 B C E
 62. "San Francisco"
 Water Color 20" x 27½"
 STYLE: Abstract
- ✕ **Hullenkremer, Odon** (Santa Fe)
 B C E
 63. "The Old Fiddler"
 Oil on Canvas 25" x 31"
 STYLE: Objective
- Hunter, Russell Vernon**
 (Roswell)
 A
 64. "For in the night in which
 He was betrayed . . ."
 Encaustic on Panel
 22" x 32½"
 STYLE: Objective, symbolic
- ✕ **Hurd, Peter** (San Patricio)
 A B D E
 65. "Tinnie Store"
 Water Color 20" x 26¼"
 STYLE: Objective
- ✕ **Hurford, Miriam Story**
 (Santa Fe)
 C D E
 66. "Cottonwood"
 Water Color 21" x 24"
 STYLE: Objective
- Hurt, Bessie** (Santa Fe)
 B C
 67. "Still Life"
 Oil on Panel 17½" x 23½"
 STYLE: Objective
- ✕ **Jonson, Raymond**
 (Albuquerque)
 A B C D E
 68. "Oil No. 7, 1952"
 Oil on Panel 25" x 29½"
 STYLE: Non-objective
- Kercheville, Christina**
 (Albuquerque)
 69. "Daisies"
 Oil on Panel 16" x 20"
 STYLE: Objective
- ✕ **King, Bernice M.** (Santa Fe)
 C
 70. "Cañada"
 Water Color 8½" x 11½"
 STYLE: Objective
- King, Edith** (Los Alamos)
 B C
 71. "Pattern"
 Oil on Canvas 18" x 19"
 STYLE: Non-objective

- ✕ **Kloss, Gene** (Taos)
 A B E
 72. "The Waterfall"
 Oil on Canvas 30" x 40"
 STYLE: Objective
- ✕ **Koch, Arthur** (Albuquerque)
 C
 73. "Abstract Figure"
 Wood Sculpture 18½" high
 STYLE: Abstract
- Larrinaga, Mario** (Taos)
 74. "Mexico"
 Oil on Panel 21" x 25"
 STYLE: Abstract, symbolic
- ✕ **Larsson, Karl** (Santa Fe)
 B C E
 75. "Study in Form"
 Oil on Canvas 23" x 27"
 STYLE: Objective
- ✕ **Latham, Barbara** (Taos)
 A B C D E
 76. "Life and Death"
 Egg Tempera on Panel
 24" x 30"
 STYLE: Surrealistic
- ✕ **Leighton, Harry** (Santa Fe)
 C
 77. "Close of a City Day"
 Oil on Canvas 24" x 30"
 STYLE: Objective
- ✕ **Lippincott, Jane** (Santa Fe)
 C
 78. "Still Life"
 Oil on Canvas 24" x 36"
 STYLE: Abstract
- ✕ **Lizer, Harlan** (Santa Fe)
 B C E
 79. "Old Houses"
 Oil on Panel 24" x 28"
 STYLE: Objective
- Loeffler, Gisella** (Taos)
 B C D E
 80. "The Piñata"
 Casein Tempera on Panel
 30" x 34"
 STYLE: Decorative
- ★• ✕ **Longley, Bernique** (Santa Fe)
 A B C D E
 81. "Morning in New Mexico"
 Oil on Canvas 31" x 44"
 STYLE: Objective, stylized
- Maccione, Thomas S.**
 (Santa Fe)
 82. "Mrs. Velma Trent"
 Oil on Canvas 24" x 42"
 STYLE: Objective
- ✕ **Marks, George B.**
 (Albuquerque)
 83. "Landscape"
 Oil on Canvas 22" x 44"
 STYLE: Objective
- McAfee, Ila** (Taos)
 B C E
 84. "Entrance to Spring"
 Oil on Canvas 30" x 36"
 STYLE: Objective, symbolic
- McCray, Dorothy** (Silver City)
 B C E
 85. "Sun and Pines"
 Oil on Panel 24" x 30"
 STYLE: Abstract
- McCray, Francis** (Silver City)
 B C D E
 86. "The Idolaters"
 Dye and Oil on Canvas
 30" x 40"
 STYLE: Surrealistic
- ✕ **McKinney, Rosalea** (Santa Fe)
 87. "Cock Fight"
 Enamel on Glass
 19½" x 19½"
 STYLE: Expressionistic
- McSwain, Jean** (Gallup)
 C
 88. "Changing Gods"
 Water Color 14½" x 19½"
 STYLE: Non-objective
- ★• ✕ **Mead, Roderick** (Carlsbad)
 A B D E
 89. "Tarascan Women"
 Oil on Canvas 29" x 48"
 STYLE: Abstract
- ✕ **Meigs, John** (San Patricio)
 90. "Remembrance of Things
 Past"
 Egg Tempera on Panel
 14" x 16"
 STYLE: Objective
- Merritt, Dean F.** (Clovis)
 B C
 91. "The Concert"
 Oil on Panel 18" x 24"
 STYLE: Abstract, symbolic

Miller, Harry Garrison

(Santa Fe)

92. "Summer"
Oil on Canvas 21" x 32½"
STYLE: Objective

✧ **Morang, Alfred** (Santa Fe)

A B C E

93. "Passion of a Sea Port"
Casein Tempera and Oil on
Canvas 25" x 34"
STYLE: Abstract

★✧ **Morang, Dorothy** (Santa Fe)

A B C E

94. "Ceremonial"
Oil on Panel 24" x 30"
STYLE: Abstract Surrealistic

✧ **Morris, William Perren**

(Santa Fe)

95. "Hangover"
Tempera 20½" x 26½"
STYLE: Abstract

✧ **Mott, Kay** (Santa Fe)

C

96. "Cottonwoods"
Oil on Canvas 25" x 30"
STYLE: Objective

✧ **Moylan, Lloyd** (Santa Fe)

B C D E

97. "The Mocking Bird"
Oil on Panel 28" x 33"
STYLE: Abstract

Muench, Cecily (Placitas)

98. "From my Window"
Pastel 8½" x 11"
STYLE: Objective

✧ **Musgrave, Arthur F.**

(Santa Fe)

A B C E

99. "Chamisa"
Oil on Panel 20" x 24"
STYLE: Objective

✧ **Naumer, Helmuth** (Santa Fe)

A B C E

100. "San Juan Indian
Pueblo"
Pastel 22" x 28"
STYLE: Objective

Neal, Mary Lois (Hobbs)

C

101. "Reflections"
Water Color 20½" x 23½"
STYLE: Abstract

✧ **Norman, LaVora** (Cloudcroft)

102. "Arizona Mine"
Oil on Canvas 18" x 24"
STYLE: Objective

Nunn, Maidie (Los Alamos)

C

103. "The Watchers"
Oil on Panel 20" x 24"
STYLE: Abstract

★✧ **O'Hara, Frederick**

(Albuquerque)

A B C D E

104. "Projection"
Oil on Canvas 24½" x 34½"
STYLE: Non-objective

Olmi, Giuseppe (Alameda)

105. "San Gimignano Hill
Town"
Oil on Canvas 25" x 30"
STYLE: Objective, stylized

•✧ **Oswald, Gene W.**

(Albuquerque)

106. "Bird Kill"
Oil on Canvas 22" x 30"
STYLE: Abstract

Page, Marge (Silver City)

E

107. "El Gancho"
Oil on Panel 24" x 30"
STYLE: Decorative

Palmer, Cliff (Albuquerque)

108. "Phoenix"
Oil on Canvas 20" x 24"
STYLE: Expressionistic

Parrish, Jean (Albuquerque)

C

109. "Anastacio"
Oil on Panel 24" x 30"
STYLE: Objective

Pearce, Helen S.

(Albuquerque)

B C E

110. "The Athenaeum"
Oil on Panel 18" x 24"
STYLE: Abstract

Porter, Aline (Santa Fe)

B

111. "Still Life"
Pastel and Water Color
22½" x 30"
STYLE: Expressionistic

- ✕ **Prest, Elizabeth Evans** (Albuquerque)
 112. "Moonlit"
 Tri-tec 18" x 23"
 STYLE: Abstract
- Price, Maria** (Santa Fe)
 113. "Still Life"
 Oil on Panel 16" x 20"
 STYLE: Abstract
- ✕ **Reynolds, Charles H.** (Taos)
 B C
 114. "Sorrow"
 Oil on Panel 20" x 26"
 STYLE: Abstract
- Ribak, Louis** (Taos)
 B C E
 115. "Market"
 Oil on Panel 36" x 48"
 STYLE: Abstract
- Richards, Marian B.** (Santa Fe)
 C
 116. "Gentlewoman"
 Oil on Canvas 21" x 24"
 STYLE: Objective
- ✕ **Rodriguez, Eliseo** (Santa Fe)
 C D E
 117. "Santuario en Chimayo"
 Oil on Canvas 24" x 30"
 STYLE: Objective
- ★•✕ **Rogoway, Alfred** (Taos)
 A B C D E
 118. "By the Sea"
 Oil on Panel 24" x 32"
 STYLE: Expressionistic
- Roth, Neil** (Albuquerque)
 119. "The Light"
 Oil on Panel 20" x 26"
 STYLE: Expressionistic
- ✕ **Rush, Olive** (Santa Fe)
 A B C E
 120. "A poem should not
 mean, but be—"
 Water Color 18" x 18½"
 STYLE: Expressionistic
- ✕ **Sahula-Dycke** (Santa Fe)
 121. "Mountain Water"
 Egg Tempera on Canvas
 30" x 41½"
 STYLE: Objective
- ✕ **Schlater, Katharine** (Santa Fe)
 B C E
 122. "The City"
 Oil on Panel 20" x 24"
 STYLE: Abstract
- ✕ **Schleeter, Howard B.**
 (Albuquerque)
 A B C D E
 123. "New Mexico Time
 Table"
 Oil, Wax and Casein Tem-
 pera on Panel 24" x 30"
 STYLE: Abstract
- ★•✕ **Schmidt, Albert H.** (Santa Fe)
 B C E
 124. "Wood Rhythm"
 Oil on Canvas 30¼" x 30¼"
 STYLE: Surrealistic
- ✕ **Schooley, Elmer** (Las Vegas)
 A B C E
 125. "Wheels"
 Oil on Canvas 17" x 40"
 STYLE: Objective
- Schuyler, Ted** (Albuquerque)
 C E
 126. "Scrub Oak Arches"
 Water Color 19½" x 27"
 STYLE: Objective
- Seis, Dolly** (Albuquerque)
 127. "The Village"
 Casein Tempera on Panel
 18" x 24"
 STYLE: Objective
- ✕ **Sheldon, Margaret** (Santa Fe)
 B
 128. "Cerro Gordo Road"
 Casein Tempera 13" x 19"
 STYLE: Objective
- ✕ **Shiras, Mary** (Taos)
 129. "The Musician"
 Oil on Panel 20" x 24"
 STYLE: Expressionistic
- ★✕ **Shonnard, Eugenie F.**
 (Santa Fe)
 A B C
 130. "Peter the Drake"
 Cement Sculpture 12" high
 STYLE: Abstract

✕ **Shuster, Will** (Santa Fe)

A C E

131. "Zozobra"
Oil and Tempera on Panel
24½" x 30"
STYLE: Objective

✕ **Sigstedt, Val** (Santa Fe)

132. "Potato Picker"
Wood Sculpture 7" high
STYLE: Objective

•✕ **Sims, Agnes C.** (Santa Fe)

A E

133. "Fetishes"
Casein Tempera 18" x 23½"
STYLE: Abstract

13
10 ✕ **Skolle, John** (Santa Fe) ✓

134. "Mirage"
Oil on Panel 20" x 28"
STYLE: Abstract Surrealis-
tic

✕ **Springer, Eva** (Santa Fe)

B

135. "Arrangement Study"
Water Color 9½" x 13"
STYLE: Objective

13
10 ✕ **Stockton, Pansy** (Santa Fe) ✓

A C

136. "Storm Over Taos"
Collage 16" x 21"
STYLE: Objective

Summers, Maud Gilchrist
(Albuquerque)

C

137. "Adobes"
Water Color 13" x 21"
STYLE: Objective

✕ **Tait, Agnes** (Santa Fe)

A B C E

138. "Noah's Ark"
Oil on Canvas 36" x 48"
STYLE: Objective, allegori-
cal

✕ **Tamotzu, Chuzo** (Santa Fe)

B C D E

139. "Sangre de Cristos in the
Spring"
Oil on Canvas 37" x 50"
STYLE: Objective

Tedford, Elsie M. (Santa Fe)

C

140. "We Too Have Passed
This Way"
Oil on Panel 16" x 20"
STYLE: Objective

✕ **Thomas, Richard K.** (Santa Fe)

B C

141. "Aluminum Mobile"
Mobile in Aluminum Sheet
and Nylon Line 2' x 4½"
STYLE: Non-objective

Toeplitz, Charlotte V. (Hobbs) ✓

B C

142. "Garden Scene"
Water Color 20½" x 22½"
STYLE: Objective

★•✕ **Van Soelen, Theodore**
(Santa Fe)

A B C D E

143. "Cowboys Changing
Mounts"
Oil on Canvas 32" x 44"
STYLE: Objective

Vineyard, Hazel (Roswell)

144. "Swimming Hole"
Oil on Panel 16" x 20"
STYLE: Objective

Volpe, James (Albuquerque)

145. "Midsummer"
Water Color 11" x 14"
STYLE: Abstract

Walter, Valyne G.

(Albuquerque)

146. "Noonday, Old Albu-
querque"
Oil on Panel 24" x 30"
STYLE: Objective

Washburn, May Murray

(Santa Fe)

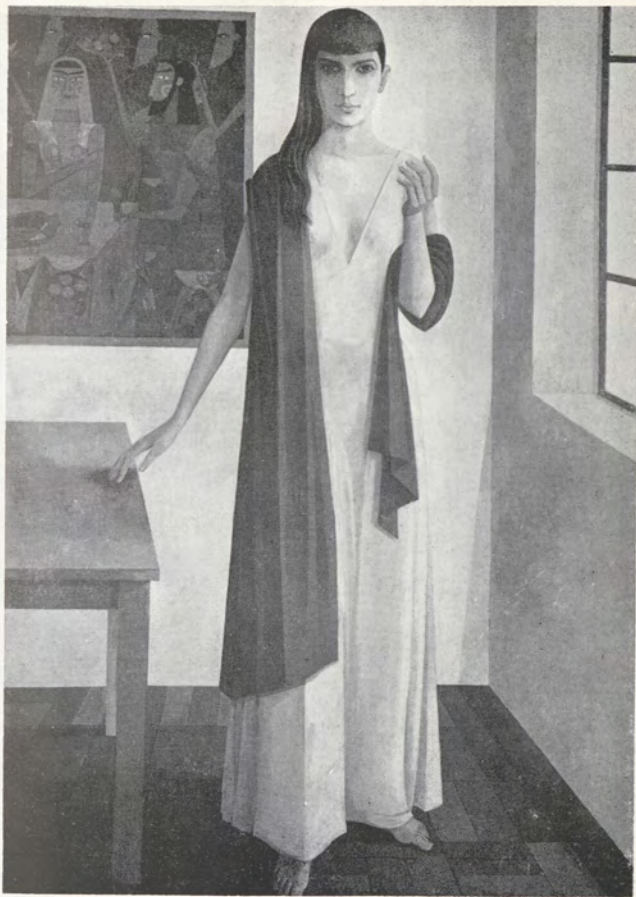
147. "Potted Hydrangea"
Oil on Canvas 23" x 29½"
STYLE: Objective

- ✕ **Weiss, Dorothea P.** (Las Cruces)
 A B C D E
 148. "The Grace of Guadalupe"
 Egg Tempera, Gold and Silver Leaf on Panel
 25" x 30"
 STYLE: Objective, symbolic
- ✕ **Wells, Cady** (Santa Fe)
 A C E
 149. "New Mexico Landscape"
 Water Color 14" x 21½"
 STYLE: Non-objective
- Wentworth, Margaret** (Santa Fe)
 150. "Agave"
 Gouache 15" x 20"
 STYLE: Abstract
- ✕ **Werner, Hans** (Santa Fe)
 E
 151. "Mexico"
 Cast Stone Sculpture 47½" high
 STYLE: Surrealistic
- ★• ✕ **West, Harold E.** (Santa Fe)
 C
 152. "Straight Poker"
 Oil on Panel 16" x 20"
 STYLE: Objective
- Wester, A. V.** (Albuquerque)
 153. "Sandias"
 Oil on Canvas 12" x 24"
 STYLE: Abstract
- ✕ **Wheelock, Warren** (Santa Fe)
 A B C E
 154. "Young Girl"
 Stone Sculpture 13" high
 STYLE: Objective
- ✕ **Wilson, Paul A.** (Los Alamos)
 155. "Wayside Crosses"
 Water Color 13" x 18½"
 STYLE: Objective
- ✕ **Winks, Lucile C.** (Los Alamos)
 B C E
 156. "New Mexico Homestead"
 Water Color 17" x 21"
 STYLE: Objective
- Woodall, Nora G.** (Tucumcari)
 157. "Desert Spines"
 Oil on Panel 22" x 28"
 STYLE: Objective
- ✕ **Wyeth, Henriette** (San Patricio)
 C D E
 158. "The Gold Rose"
 Oil on Canvas 16" x 18"
 STYLE: Objective
- ✕ **Yordy, D. Byrd** (Española)
 E
 159. "Still Life—Toy Carnival"
 Oil on Canvas 36" x 48½"
 STYLE: Abstract
- ✕ **Young, Margaret** (Santa Fe)
 160. "Water Sprite"
 Wood Sculpture 9" x 18"
 STYLE: Abstract
- ✕ **Young, Webb** (Santa Fe)
 C
 161. "Spring in Pojoaque"
 Water Color and Gouache
 30" x 40"
 STYLE: Objective
- Young-Hunter, John** (Taos)
 B C E
 162. "Tavitita and Chico"
 Oil on Canvas 20" x 26"
 STYLE: Objective

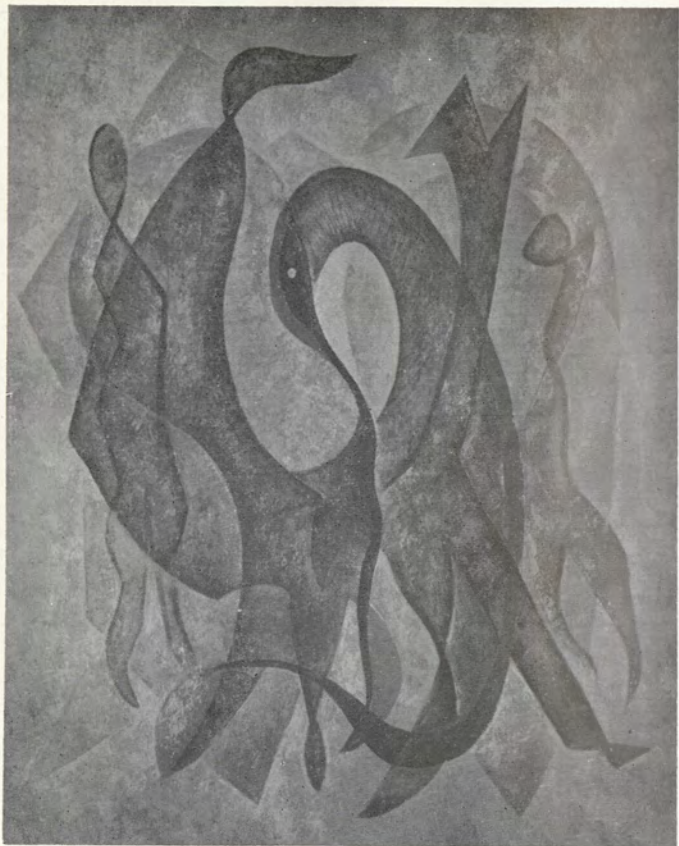
REPRODUCTIONS



RANDALL DAVEY
"Girl in a Hunting Cap" Oil (32)



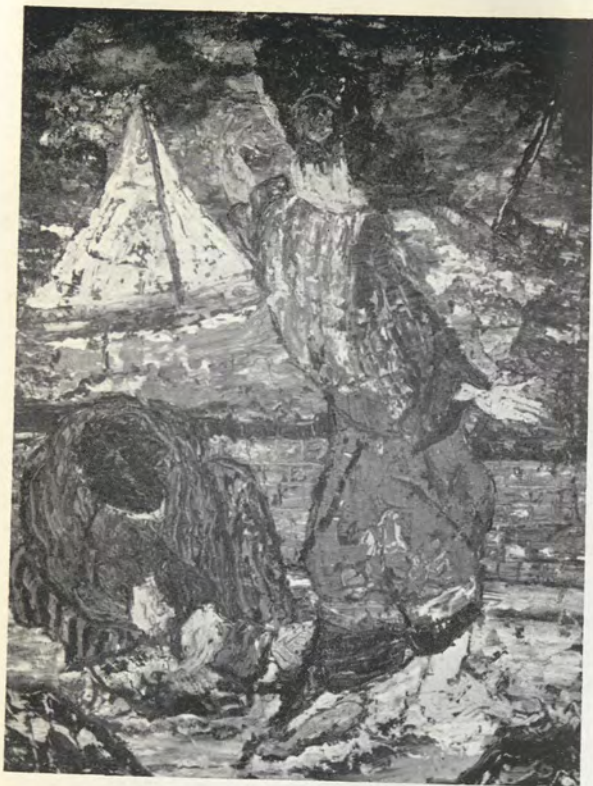
BERNIQUE LONGLEY
"Morning in New Mexico" Oil (81)
Purchase



DOROTHY MORANG
"Ceremonial" Oil (94)
Purchase

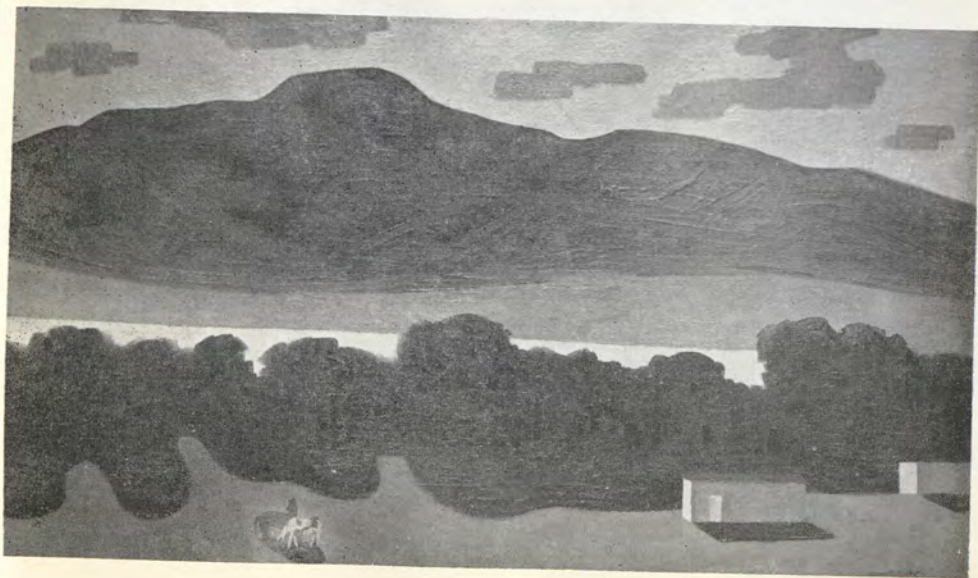


LOUIE H. EWING
"Top of Sandia" Oil (40)
Purchase



ALFRED ROGOWAY
"By the Sea" Oil (118)

KENNETH M. ADAMS
"Early Morning" Oil (1)





EUGENIE F. SHONNARD
"Peter the Drake" *Cement* (130)

TOM BENRIMO
"Tombs" *Oil* (14)





RODERICK MEAD
"Tarascan Women" Oil (89)

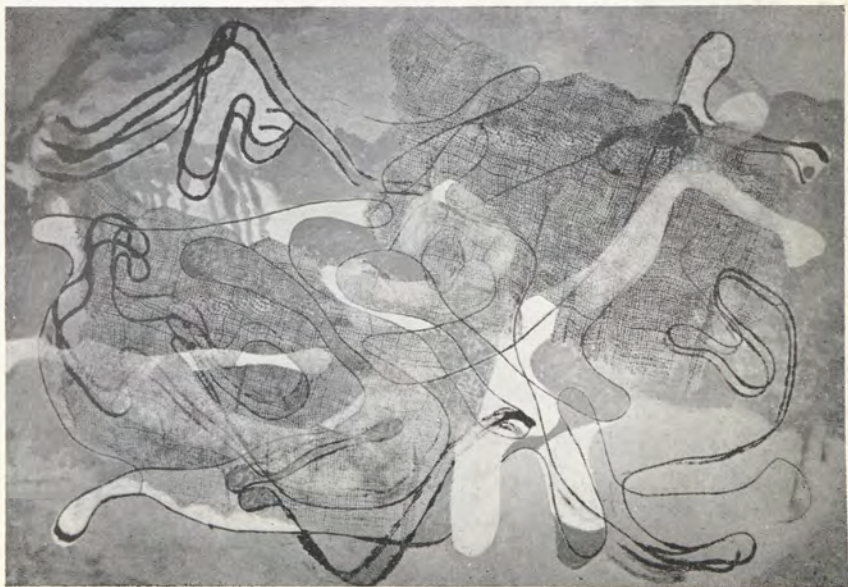
TED EGRI
"Koshare" Oil (37)

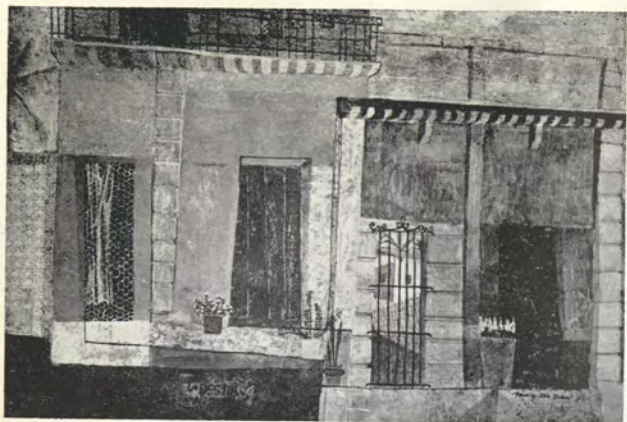




ALBERT H. SCHMIDT
"Wood Rhythm" Oil (124)

FREDERICK O'HARA
"Projection" Oil (104)



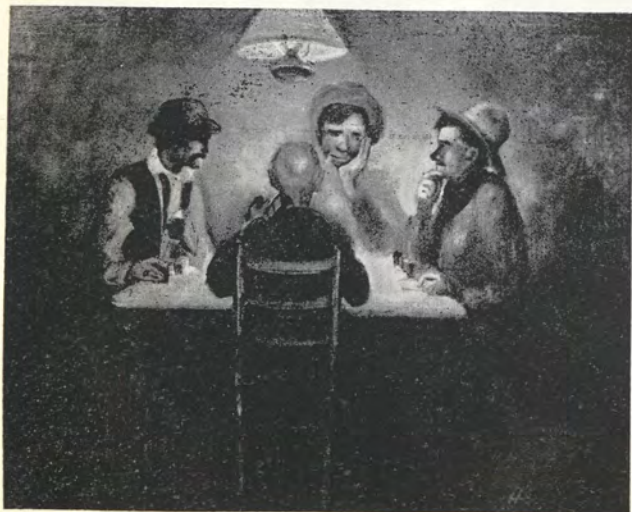


MARY LOU ENLOW
"Calle de Flores" *Tempera* (39)



WALTER HOOK
"San Francisco" *Water Color* (62)

HAROLD E. WEST
"Straight Poker" *Oil* (152)



INDICES

Geographical Index

Alameda

Giuseppe Olmi (105)

Albuquerque

Kenneth M. Adams (1)
Frederick Black (17)
Evelyn B. Civerolo (29)
Beth Danfelser (31)
Ralph Douglass (35)
Mary Lou Enlow (39)
Joseph Fitzpatrick (43)
Walter Hook (62)
Raymond Jonson (68)
Christina Kercheville (69)
Arthur Koch (73)
George B. Marks (83)
Frederick O'Hara (104)
Gene W. Oswald (106)
Cliff Palmer (108)
Jean Parrish (109)
Helen S. Pearce (110)
Elizabeth Evans Prest (112)
Neil Roth (119)
Howard B. Schleeter (123)
Ted Schuyler (126)
Dolly Seis (127)
Maud Gilchrist Summers (137)
James Volpe (145)
Valyne G. Walter (146)
A. V. Wester (153)

Carlsbad

Roderick Mead (89)

Cloudcroft

LaVora Norman (102)

Clovis

Pedro L. Cervantez (26)
Dean F. Merritt (91)

Dexter

Oscar Greene (55)

Española

D. Byrd Yordy (159)

Gallup

Jean McSwain (88)

High Rolls

Heber Forehand (46)

Hobbs

Mary Lois Neal (101)
Charlotte V. Toeplitz (142)

Las Cruces

Richard Artschwager (3)
Kenneth R. Barrick (11)
State College
Dorothea P. Weiss (148)
Mesilla Park

Las Vegas

Gussie Dujardin (36)
Montezuma
Elisabeth Hanson (58)
Elmer Schooley (125)
Montezuma

Lincoln

John Boylan (22)

Los Alamos

Richard M. Bidwell (15)
Virginia Parks Brown (24)
Edith King (71)
Maidie Nunn (103)
Paul A. Wilson (155)
Lucile C. Winks (156)

Placitas

Cecily Muench (98)

Roswell

Rose Baranchik (10)
Russell Vernon Hunter (64)
Hazel Vineyard (144)

San Patricio

Peter Hurd (65)
John Meigs (90)
Henriette Wyeth (158)

Santa Cruz

Suzanne K. Boss (21)

Santa Fe

Don Armentrout (2)
Barry Atwater (4)
Robert Atwood (5)
J. Gordon Bailey (6)
Jozef Bakos (7)
Teresa Bakos (8)
Cyrus LeRoy Baldrige (9)
Charles Barrows (12)
Gustave Baumann (13)
Howard Bopst (20)
Ina Sizer Cassidy (25)
Janette Chalk (27)
Randall Davey (32)
Clare Dieman (33)

John Dorman (34)
Fremont F. Ellis (38)
Louie H. Ewing (40)
Marrie B. Ewing (41)
Vivian Sloan Fiske (42)
Opal Fitzpatrick (44)
Charlotte Fowler (47)
Joyce J. Fox (48)
Madeleine Galt (49)
Eleanor de Ghizé (52)
David R. Gonzales (53)
Bill Grahn (54)
Mel A. Hagman (56)
Betsy Hancock (57)
Veronica Helfensteller (59)
Odon Hullenkremer (63)
Miriam Story Hurford (66)
Bessie Hurt (67)
Bernice M. King (70)
Karl Larsson (75)
Harry Leighton (77)
Janet Lippincott (78)
Harlan Lizer (79)
Bernique Longley (81)
Thomas S. Macaione (82)
Rosalea McKinney (87)
Harry Garrison Miller (92)
Alfred Morang (93)
Dorothy Morang (94)
William Perren Morris (95)
Kay Mott (96)
Lloyd Moylan (97)
Arthur F. Musgrave (99)
Helmuth Naumer (100)
Aline Porter (111)
Maria Price (113)
Marian B. Richards (116)
Eliseo Rodriguez (117)
Olive Rush (120)
Sahula-Dycke (121)
Katharine Schlater (122)
Albert H. Schmidt (124)
Margaret Sheldon (128)
Eugenie F. Shonnard (130)
Will Shuster (131)
Val Sigstedt (132)
Agnes C. Sims (133)
John Skolle (134)
Eva Springer (135)

Pansy Stockton (136)
Agnes Tait (138)
Chuzo Tamotzu (139)
Elsie M. Tedford (140)
Richard K. Thomas (141)
Theodore Van Soelen (143)
May Murray Washburn (147)
Cady Wells (149)
Margaret Wentworth (150)
Hans Werner (151)
Harold E. West (152)
Warren Wheelock (154)
Margaret Young (160)
Webb Young (161)

Silver City

Dorothy McCray (85)
Francis McCray (86)
Marge Page (107)

Taos

Tom Benrimo (14)
Emil Bisttram (16)
Ernest L. Blumenschein (18)
Helen G. Blumenschein (19)
D. E. Brett (23)
Howard Cook (30)
Ted Egri (37)
Joseph A. Fleck (45)
Louise Ganthiers (50)
Leon Gaspard (51)
E. Martin Hennings (60)
Gene Kloss (72)
Mario Larrinaga (74)
Barbara Latham (76)
Gisella Loeffler (80)
Ila McAfee (84)
Charles H. Reynolds (114)
Louis Ribak (115)
Alfred Rogoway (118)
Mary Shiras (129)
John Young-Hunter (162)

Tucumcari

Iris Chew (28)
Adelina Ortiz de Hill (61)
Nora G. Woodall (157)

Index of Styles

Objective

Painting or sculpture in which the artist portrays the nature of his subject matter objectively, without any attempt to indicate his personal feelings regarding the subject by means of distortion or otherwise.

- Don Armentrout (2)
Barry Atwater (4)
Robert Atwood (5)
Jozef Bakos (7)
Cyrus LeRoy Baldrige (9)
Kenneth R. Barrick (11)
Charles Barrows (12)
Ernest L. Blumenschein (18)
Howard Bopst (20)
Suzanne K. Boss (21)
Pedro L. Cervantez (26)
Iris Chew (28)
Randall Davey (32)
Ralph Douglass (35)
Fremont F. Ellis (38)
Louie H. Ewing (40)
Marrie B. Ewing (41)
Opal Fitzpatrick (44)
Joseph A. Fleck (45)
Heber Forehand (46)
Joyce J. Fox (48)
Madeleine Galt (49)
Leon Gaspard (51)
David R. Gonzales (53)
Mel A. Hagman (56)
Betsy Hancock (57)
Elisabeth Hanson (58)
E. Martin Hennings (60)
Adelina Ortiz de Hill (61)
Odon Hullenkremer (63)
Russell Vernon Hunter (64)
Peter Hurd (65)
Miriam Story Hurford (66)
Bessie Hurt (67)
Christina Kercheville (69)
Bernice M. King (70)
Gene Kloss (72)
Karl Larsson (75)
Harry Leighton (77)
Harlan Lizer (79)
Bernique Longley (81)
Thomas S. Macaione (82)
George B. Marks (83)
Ila McAfee (84)
John Meigs (90)
Harry Garrison Miller (92)
Kay Mott (96)
Cecily Muench (98)
Arthur F. Musgrave (99)
Helmuth Naumer (100)
LaVora Norman (102)
Giuseppe Olmi (105)
Jean Parrish (109)
Marian B. Richards (116)
Eliseo Rodriguez (117)
Sahula-Dycke (121)
Elmer Schooley (125)
Ted Schuyler (126)
Dolly Seis (127)
Margaret Sheldon (128)
Will Shuster (131)
Val Sigstedt (132)
Eva Springer (135)
Pansy Stockton (136)
Maud Gilchrist Summers (137)
Agnes Tait (138)
Chuzo Tamotzu (139)
Elsie M. Tedford (140)
Charlotte V. Toepfritz (142)
Theodore Van Soelen (143)
Hazel Vineyard (144)
Valyne G. Walter (146)
May Murray Washburn (147)
Dorothea P. Weiss (148)
Harold E. West (152)
Warren Wheelock (154)
Paul A. Wilson (155)
Lucile C. Winks (156)
Nora G. Woodall (157)
Henriette Wyeth (158)
Webb Young (161)
John Young-Hunter (162)

Expressionistic

Painting or sculpture in which the artist expresses his own subjective feelings towards his subject matter, through distortion or other spontaneous emotional treatment.

- Rose Baranchik (10)
Helen G. Blumenschein (19)
Ina Sizer Cassidy (25)
Ted Egri (37)
Charlotte Fowler (47)
Eleanor de Ghizé (52)
Oscar Greene (55)
Rosalea McKinney (87)
Cliff Palmer (108)
Aline Porter (111)
Alfred Rogoway (118)
Neil Roth (119)
Olive Rush (120)
Mary Shiras (129)

Abstract

Painting or sculpture in which the artist selects from his subject matter elements of line, plane or form which he considers interesting in themselves—not just as parts of natural objects—and uses these in planned composition. The source material may be only slightly abstracted, or almost unrecognizable.

Kenneth M. Adams (1)
Richard Artschwager (3)
Richard M. Bidwell (15)
Emil Bisttram (16)
Frederick Black (17)
John Boylan (22)
Virginia Parks Brown (24)
Janette Chalk (27)
Evelyn B. Civerolo (29)
Howard Cook (30)
Beth Danfelter (31)
Clare Dieman (33)
Gussie Dujardin (36)
Mary Lou Enlow (39)
Vivian Sloan Fiske (42)
Joseph Fitzpatrick (43)
Bill Grahn (54)
Walter Hook (62)
Arthur Koch (73)
Mario Larrinaga (74)
Janet Lippincott (78)
Dorothy McCray (85)

Roderick Mead (89)
Dean F. Merritt (91)
Alfred Morang (93)
William Perren Morris (95)
Lloyd Moylan (97)
Mary Lois Neal (101)
Maidie Nunn (103)
Gene W. Oswald (106)
Helen S. Pearce (110)
Elizabeth Evans Prest (112)
Maria Price (113)
Charles H. Reynolds (114)
Louis Ribak (115)
Katharine Schlater (122)
Howard B. Schleeter (123)
Eugenie F. Shonnard (130)
Agnes C. Sims (133)
James Volpe (145)
Margaret Wentworth (150)
A. V. Wester (153)
D. Byrd Yordy (159)
Margaret Young (160)

Non-Objective

Painting or sculpture which renders compositions conceived entirely in the mind of the artist and free from intentional reference to objects of nature.

J. Gordon Bailey (6)
Tom Benrimo (14)
John Dorman (34)
Louise Ganthiers (50)
Raymond Jonson (68)

Edith King (71)
Jean McSwain (88)
Frederick O'Hara (104)
Richard K. Thomas (141)
Cady Wells (149)

Surrealistic

Painting or sculpture which portrays objects in unnatural juxtaposition or incongruous settings such as occur in dreams—may be Abstract Surrealism, which theoretically makes use of unreal forms derived from the artist's subconscious.

Veronica Helfensteller (59)
Barbara Latham (76)
Francis McCray (86)
Dorothy Morang (94)

Albert H. Schmidt (124)
John Skolle (134)
Hans Werner (151)

Decorative

Painting or sculpture, either objective or abstract, in which a decorative effect in form and color is the most obvious quality.

Teresa Bakos (8)
Gustave Baumann (13)
D. E. Brett (23)

Gisella Loeffler (80)
Marge Page (107)

Memos last night - end of 2nd para. read
Oct 20 not 16. Boesinger.

The Fine Arts

MUSEUM OF NEW MEXICO

SCHOOL OF AMERICAN RESEARCH

Board Members

Paul A. F. Walter, *Chairman*; Wayne L. Mauzy, *Secretary-Treasurer*; Jennie M. Avery, *Assistant Treasurer*; Peter Hurd, Mrs. Thomas E. Curtin, John P. Harrington, Eleanor Johnson, Rufus B. von KleinSmid, John Gaw Meem, Mrs. C. H. Dietrich, Huston Thompson, Willard V. King, Tom L. Popejoy, Spencer L. Rogers, W. W. Postlethwaite, Jesse L. Nusbaum, A. V. Kidder, Eva Springer, Amelia E. White, Herbert W. Clark, Henry Dendahl, Frederick W. Hodge, C. M. Botts, James G. McNary, Kenneth M. Chapman, Parker Wilson, Charles B. Barker, Byron Cummings, H. C. Gossard, Horace M. Albright, Tsianina, Oliver Seth, Charles H. Corlett, Theodore Van Soelen.

BOAZ LONG, *Vice Chairman and Director*.

Regents

Governor Edwin L. Mechem, *ex-officio*; Daniel T. Kelly, *President*; Paul A. F. Walter, *Treasurer*; Fray Angelico Chavez, Jennie M. Avery, Henry Dendahl.

Museum of New Mexico Art Gallery

Built in 1917 to foster the fine arts in New Mexico. Devoted to the development and maintenance of a permanent collection of New Mexico art, past and contemporary, and to the promotion of interest and appreciation in the arts, including painting, sculpture, architecture, music, dance, drama and poetry.

Art Advisory Committee

Ex-Officio Members: Peter Hurd, John Gaw Meem, Theodore Van Soelen.

Elective Members: Kenneth Adams, Howard Schleeter, Howard Cook.

Art Gallery Staff

Reginald Fisher, *Director of Fine Arts*

Dorothy Morang, *Secretary of Fine Arts in Charge of Traveling Exhibitions*

Hester Jones, *Curator of Contemporary New Mexico Art*

Alice Sharp, *Registrar*

Apolonio Rodriguez, *Custodian of Art*

Dorothy Walter, *Gallery Assistant*

Barbara Phillips, *Summer Gallery Assistant*

Vicente Padilla, *Gardener and Janitor*

Spanish Colonial Arts

E. Boyd, *Curator*

Honorary Associates

Dr. Hans Lange, *Director, Albuquerque Civic Symphony Orchestra and Santa Fe Sinfonietta and Choral Society.*

Ruth S. Wilson, *Director of the Chorus, Santa Fe Sinfonietta and Choral Society*

Ruth Grant, *Director, Santa Fe Boy Choir*

Martha Ann Walker, *Serigrapher and Painter, Spanish Colonial Arts*