



39th ANNUAL EXHIBITION
For New Mexico Artists

**MUSEUM OF NEW MEXICO
ART GALLERY**
Santa Fe

August 10 to September 15, 1952

Table of Contents

Foreword	Page 3
Committees	Page 6
Catalog of the Exhibition	Page 7
Geographical Index	Page 20
Index of Styles	Page 23
Committee Members (Biographical)	Page 26
Reproductions	Page 29

. . .

On the Cover

ERNEST L. BLUMENSCHIN
"Downtown Albuquerque" *Oil* (20)

Not eligible for Purchase Award

Copyright, 1952
University of New Mexico Press
All Rights Reserved

1100 Copies

FOREWORD

The 39th Annual

The Annual Exhibition for New Mexico Artists—popularly called “The Fiesta Show”—this year continues the policy of a selected exhibition, inaugurated with the 38th Annual in 1951. The aim of the exhibition is to present a cross-section of the past year’s art works of New Mexico and to provide a wider showing for New Mexico artists, all of whom are invited to participate in the exhibition. New Mexico artists are defined as those who claim the state as their legal residence or who reside in the state for at least six months of the year.

Two hundred works—the estimated capacity of the Gallery—have been selected for the exhibition from some two hundred seventy-five entries. These were chosen on the basis of artistic merit regardless of style, by a three-member committee composed of: 1. An out-of-state art professional as chairman, 2. A New Mexico artist of nation-wide distinction, 3. A New Mexico layman of recognized knowledge in the arts.

This committee was vested with the responsibility of selecting the two hundred works for the exhibition and the thirty paintings to comprise the annual national traveling show, whose purpose is to represent the leading current work of New Mexico painters. The Committee on Selections also had the privilege of recommending fifteen works for Museum Purchase Awards to be reproduced in the catalog.

The Purchase Awards are made by the Gallery’s Art Advisory Committee—a continuing five-member board of leading New Mexico artists representing the several centers of the state—which assists in defining the policy of the Gallery and is conversant with the purpose and needs of the permanent collection. The Purchase Awards are made on the basis of: first, artistic merit and second, need of the permanent collection. Other things being equal, artists already represented in the permanent collection are considered less eligible for purchase than those not represented. Members of the Committee on Selections and the Art Advisory Committee are ineligible for Purchase Awards from the exhibition.

All entries for the 39th Annual not included in the two hundred works are held, at the option of the artist, for showing in the 1952 open-door Autumn Exhibition which follows in the Gallery—mid-October through November.

By special arrangements with the New Mexico State Fair Commission, the two hundred works of the 39th Annual will go intact to the State Fair Exhibit Hall in Albuquerque, at the close of the Santa Fe showing, to be continued there as the State Fair's Professional Artists Exhibition—September 27 through October 5. The customary amateur artists show of the State Fair will be arranged as an additional exhibit by the Fair's Art Superintendent.

A small though distinct shift from the objective and impressionistic toward the non-objective, expressionistic and fantasy styles is noticeable in comparing the 39th Annual with the 38th. In the 38th, 56 per cent was classed as objective and 6 per cent impressionistic with 50 per cent objective and 1 per cent impressionistic in the 39th; whereas, in the 38th, 3.1 per cent are non-objective, 5.3 per cent expressionistic, and 8 per cent fantasy, with 5 per cent non-objective, 7.1 per cent expressionistic and 9.3 per cent fantasy in the 39th Annual. The percentage of abstract works remains the same at around 22 per cent.

As usual, the current exhibition was installed under the supervision of an impartial committee of artists and laymen representing the several fields of art in New Mexico. The decisions of this Hanging Committee as to location on the gallery walls are considered final by the Museum.

The works of the exhibition are for sale and visitors are invited to inquire regarding prices.

REGINALD FISHER
Head of Fine Arts

Committee on Selections

DOEL REED

ERNEST L. BLUMENSCHNEIN

A. VERNER WASSON

Hanging Committee

RALPH DOUGLASS

CLIFF HARMON

BRADLEY P. KIDDER

G. ROBERT SHARP

RICHARD K. THOMAS

Art Advisory Committee

KENNETH M. ADAMS

HOWARD COOK

JOHN F. DIETRICH

HOWARD B. SCHLEETER

THEODORE VAN SOELEN

CATALOG OF THE EXHIBITION

The Exhibition

★Adams, Kenneth M.

(Albuquerque)

A B C D E

1. "The Valley"

Oil on canvas 30" x 40"

STYLE: Semi-abstract

Artschwager, Richard

(Las Cruces)

2. "Landscape near White Sands"

Oil on panel 15" x 20"

STYLE: Abstract

Atwater, Barry (Santa Fe)

B C D

3. "Desert Sunrise"

Oil on panel 24" x 30"

STYLE: Objective

Atwood, Robert (Santa Fe)

C

4. "Lympia Canyon"

Oil on canvas 22" x 28"

STYLE: Objective

◦★Bakos, Jozef (Santa Fe)

A B C D

5. "Lightning"

Oil on canvas 30" x 36"

STYLE: Fantasy

Bakos, Teresa (Santa Fe)

C D

6. "Pigeon on Pavement"

Oil on panel 22" x 24"

STYLE: Fantasy

Baldrige, Cyrus Le Roy

(Santa Fe)

7. "Santa Fe Sky"

Oil on panel 22" x 28"

STYLE: Objective

Bambrook, Walter

(Albuquerque)

C

8. "A Touch of Yellow"

Oil on canvas 24" x 30"

STYLE: Objective

Barela, Patrocino (Taos)

A C

9. "Figures"

Cedar wood sculpture 58" high

STYLE: Objective, primitive

Barker, Mary K. (Mesilla Park)

C

10. "La Mantilla"

Oil on canvas 20" x 24"

STYLE: Objective

Barrett, Lawrence

(Albuquerque)

C

11. "Adobe Maker"

Oil on canvas 22" x 28"

STYLE: Semi-abstract

◦★Barrick, Kenneth (Las Cruces)

C D

12. "Motherless Child"

Casein tempera on panel

24" x 30"

STYLE: Expressionistic

Barry, Anna (Santa Fe)

C

13. "The Gateway"

Oil on canvas 20" x 24"

STYLE: Objective

Baumann, Gustave (Santa Fe)

A B C D

14. "Sunrise in Mexico"

Oil on panel

STYLE: Objective

Bilbo, C. Bishop (Alamogordo)

15. "Timida con Flores de Mescal"

Water Color 20" x 25"

STYLE: Objective

Binkley, Betty (Santa Fe)

D

16. "Sail Boat"

Oil on canvas 18" x 24"

STYLE: Expressionistic

◦ Recommended by Selection Committee for purchase
Reproduced in catalog

★ One of 30 works selected for 38th Annual for national traveling exhibition during coming year

* One of 5 alternates selected for the national traveling exhibition

A Represented in permanent collection, Museum of New Mexico Art Gallery

B Represented in permanent collection of at least one gallery outside New Mexico

C Was included in 38th Annual Exhibition of the Museum of New Mexico Art Gallery

D Has been included in an Invitational Exhibition of the Gallery

E Member of National Academy of Design (Associate or Academician)

NOTE: Dimensions listed are for stretcher or panel size (not including frame) or in case of matted works for mat opening size (not including mat or frame).

***Bisttram, Emil (Taos)**

B C D

17. "Moon Magic"
Oil on canvas 32" x 36"
STYLE: Non-objective

Black, Frederick (Albuquerque)

18. "Still Life"
Oil on panel 20" x 24"
STYLE: Expressionistic

•*Blood, Kimball (Taos)

C D

19. "Still Life"
Oil on canvas 20" x 40"
STYLE: Abstract

•*Blumenschein, Ernest L. (Taos)

A B C D E

20. "Downtown Albuquerque"
Oil on canvas 30" x 40"
STYLE: Objective

Blumenschein, Helen (Taos)

B C D

21. "Winter"
Oil on canvas 30" x 34"
STYLE: Objective

Boss, Suzanne (Santa Cruz)

C

22. "Medanales"
Oil on canvas 22" x 26"
STYLE: Semi-abstract

Boylan, John (Lincoln)

23. "Chapulín"
Oil on canvas 17" x 33"
STYLE: Fantasy

Breneiser, Stanley (Santa Fe)

C D

24. "Agate Inspiration"
Oil on canvas 26" x 32"
STYLE: Fantasy, abstract

***Brett, Dorothy (Taos)**

B C D

25. "Santo Domingo Corn
Dance"
Oil on panel 24" x 28"
STYLE: Objective, decorative

Bricker, Betty (Los Alamos)

C

26. "Winter in the Jemez"
Water Color 15" x 22"
STYLE: Objective

Brown, Malcolm (Albuquerque)

27. "Torso"
Stone sculpture 24" high
STYLE: Abstract

Cassidy, Ina Sizer (Santa Fe)

C

28. "The Garden of Eden"
Wood sculpture 8" high
STYLE: Fantasy

Cervantez, Pedro L. (Santa Fe)

B C

29. "High Lonesome"
Oil on canvas 17" x 22"
STYLE: Objective

Chew, Iris (Tucumcari)

C

30. "Georgia y Sofia"
Oil on canvas 34" x 40"
STYLE: Objective

•*Cook, Howard (Taos)

A B C D E

31. "Velarde in Autumn"
Pastel 18" x 34"
STYLE: Abstract

Corput, Ruby H. (Taos)

B

32. "Dahlia"
Pastel 21" x 27"
STYLE: Objective, decorative

Culbert, Caroline (Las Cruces)

33. "Winter Landscape"
Oil on panel 18" x 24"
STYLE: Objective

Daley, Richard (Taos)

B C

34. "Vermillion Hills"
Oil on canvas 20" x 26"
STYLE: Abstract

Dark, Philip J. C. (Santa Fe)

D

35. "A Bird in the Garden"
Construction in paint, wood,
string, etc. 22" x 32"
STYLE: Abstract

***Davey, Randall (Santa Fe)**

A B C D E

36. "Still Life—Pheasant"
Oil on panel 26½" x 32"
STYLE: Objective

Decker, Lindsey (Taos)

C

37. "The City—No. 6"
Oil and Duco on panel 20" x 28"
STYLE: Abstract

Degen, Mabel (Taos)

B C

38. "Towards the Mountains"
Oil on canvas 24" x 30"
STYLE: Objective

Dieman, Clare (Santa Fe)

B C

39. "Anima and Animus"
Wood bas-relief 23" x 38"
STYLE: Objective

Dietrich, John (Las Vegas)

B C

40. "Figure"
Terra cotta sculpture inlaid
with turquoise
STYLE: Objective, decorative

Dolmuth, Rex (Taos)

41. "Acrobats"
Oil on panel 18" x 22"
STYLE: Abstract

Dominish, William H. (Taos)

42. "Bonnie"
Oil on canvas 16" x 27"
STYLE: Abstract

Dorman, John (Santa Fe)

C D

43. "The Prophet"
Mixed media 25" x 30"
STYLE: Fantasy

Douglass, Ralph (Albuquerque)

B C D

44. "Arroyo Ranch"
Water Color 15" x 21"
STYLE: Objective

Drum, Paul D. (State College)

45. "Desert Trail"
Oil on Panel 24" x 30"
STYLE: Objective

Dujardin, Gussie (Las Vegas)

46. "Indian Woman"
Ebony wood sculpture 7½"
high
STYLE: Objective

Egri, Ted (Taos)

B C

47. "In Memoriam"
Wood sculpture and painting
31" high
STYLE: Expressionistic

Ellis, Fremont (Santa Fe)

A B C D

48. "Walking Rains"
Oil on canvas 24" x 30"
STYLE: Objective

Enlow, Mary Lou (Albuquerque)

D

49. "The Carnival"
Casein tempera 18" x 24"
STYLE: Semi-abstract

Ewing, Louie (Santa Fe)

A B D

50. "Along the Rio Grande"
Oil on panel 22" x 28"
STYLE: Objective

Fiske, Vivian Sloan (Santa Fe)

C D

51. "Floating Leaves, Shells,
Lilies"
Gouache 16" x 22"
STYLE: Fantasy

Fitzpatrick, Opal (Santa Fe)

C

52. "Spring Brilliance"
Pastel 16" x 23"
STYLE: Objective

- *Fleck, Joseph (Taos)**
B C D
53. "After the Storm"
Oil on panel 33" x 38"
STYLE: Objective
- Forehand, H. (High Rolls)**
54. "Head"
Cedar wood sculpture 8" high
STYLE: Objective
- Fowler, Charlotte (Santa Fe)**
55. "Santa Clara Horse"
Oil on panel 17½" x 21½"
STYLE: Expressionistic
- Freeman, Ralph L. (Albuquerque)**
56. "Along the Jemez Creek"
Pastel 21" x 29"
STYLE: Objective
- Frey, Gerda (Truth or Consequences)**
57. "Golden Aspens"
Oil on canvas 22" x 26"
STYLE: Objective
- *Ganthiers, Louise (Taos)**
58. "Kosharis"
Encaustic on panel 33" x 41"
STYLE: Abstract
- Gaspard, Leon (Taos)**
A B C D
59. "Princess Nirgiama of Mongolia"
Oil on canvas 30" x 36"
STYLE: Objective, decorative
- Ghizé, Eleanor de (Santa Fe)**
60. "Construction"
Oil on panel 18" x 24"
STYLE: Objective
- Gilbertson, Warren (Santa Fe)**
C
61. "Bird with Fish"
Ceramic sculpture 14" high
STYLE: Abstract
- Godard, D. V. (Albuquerque)**
62. "Old Baldy"
Oil on canvas 25" x 30"
STYLE: Objective
- Goldman, Herb (Albuquerque)**
63. "Synthesis"
Limestone sculpture 21" high
STYLE: Abstract
- Gonzales, David (Santa Fe)**
C
64. "Serenata en la Plaza"
Water Color 14½" x 19"
STYLE: Objective
- Grahn, William (Santa Fe)**
65. "Organic Form"
Wood sculpture 12" high
STYLE: Non-objective
- Grant, Robert (Santa Fe)**
D
66. "Boy with Guitar"
Oil on canvas 25" x 35"
STYLE: Expressionistic
- Greene, Oscar (Dexter)**
C
67. "The Abundant Life"
Soapstone sculpture 6" high
STYLE: Expressionistic
- *Greenhaw, Bill (Roswell)**
68. "In Old Santa Fe"
Oil on panel 20" x 36"
STYLE: Objective
- *Gribbroek, Robert (Taos)**
B
69. "Beyond Civilization to Texas"
Oil on canvas 27" x 36"
STYLE: Fantasy
- Gusdorf, Wanda (Santa Fe)**
C
70. "Work Rhythm"
Water Color 16" x 27"
STYLE: Non-objective
- Gustafson, Sven (Santa Fe)**
71. "Nude"
Water Color 13" x 16"
STYLE: Abstract
- *Haas, Lez (Albuquerque)**
B C D
72. "Composition in South-eastern Motif"
Oil on canvas 22" x 38"
STYLE: Non-objective

Hall, Norma B. (Alcalde)

B C D

73. "Aspens along a Stream"

Oil on panel 16" x 20"
STYLE: Objective

Haney, Buff (Taos)

74. "Still Life with Shells"

Oil on canvas 24" x 30"
STYLE: Abstract

Hanners, La Verne (Folsom)

75. "Old House with Roses"

Oil on canvas 28" x 36"
STYLE: Objective

Harmon, Cliff (Taos)

76. "Still Life No. 12"

Oil on canvas 16" x 24"
STYLE: Abstract

Harper, Pauline (Taos)

C

77. "Margherita and Child"

Oil on panel 20" x 30"
STYLE: Expressionistic

Haverstick, Jake (Albuquerque)

78. "Gathering the Piñon"

Oil on canvas 26" x 36"
STYLE: Objective

Helfensteller, Veronica

(Santa Fe)

B C D

79. "Compost"

Casein tempera 18" x 24"
STYLE: Fantasy

Hening, Brand (Albuquerque)

C D

80. "Sandia Rim"

Oil on canvas 27½" x 34"
STYLE: Objective

Hennings, E. Martin (Taos)

B C D

81. "Irrigation"

Oil on canvas 36" x 40"
STYLE: Objective

***Herrera, Joe H. (Cochiti Pueblo)**

B C

82. "Eagles and Rabbit"

Casein tempera 16" x 21"
STYLE: Indian, abstract

Herrera, Velino (Santa Fe)

A B C

83. "Buffalo Dance"

Water Color 14" x 22"
STYLE: Indian

Hook, Walter (Albuquerque)

B C D

84. "Quiescence"

Oil on panel 26" x 37"
STYLE: Semi-abstract

Hooton, Robert (Albuquerque)

85. "Frijoles Canyon"

Casein tempera and oil on
panel 18" x 24"
STYLE: Abstract

Hullenkremer, Odon (Santa Fe)

B C D

86. "Relaxing in Alamos"

Oil on canvas 22" x 28"
STYLE: Objective

***Hurford, Miriam Story**

(Santa Fe)

87. "Tesuque Valley"

Water Color 14" x 19"
STYLE: Objective

Hurt, Bessie (Santa Fe)

C

88. "Landscape"

Oil on panel 24" x 30"
STYLE: Objective

Husler, Janey Brown (Madrid)

C

89. "Along the Rio Grande"

Oil on panel 36" x 36"
STYLE: Objective

Israel, Alfred (Santa Fe)

90. "Southwest Influence"

Encaustic on panel 26" x 30"
STYLE: Non-objective

Jacobson, Arthur R. (Taos)

91. "Wind of Greed"

Encaustic on panel 30" x 40"
STYLE: Fantasy, abstract

Johnson, Mae (Cuba)

C

92. "Navajo Women Hoeing Corn"

Oil on panel 18" x 24"
STYLE: Expressionistic

***Jonson, Raymond (Albuquerque)**

A B C D

93. "Watercolor No. 1, 1951"

Water Color 24" x 27"
STYLE: Non-objective

Kaiser, Louis Dale (Cuervo)

94. "Cap Rock"

Oil on canvas 26" x 30"
STYLE: Abstract

***Karavas, Noula (Taos)**

C D

95. "Rhythm of the Leaves"

Water Color 22" x 28"
STYLE: Abstract, decorative

Kiker, Vesta (Taos)

96. "In the Hills"

Water Color 15" x 22"
STYLE: Objective

King, Bernice (Santa Fe)

97. "Storage House, Aspen Ranch"

Water Color 10" x 14"
STYLE: Objective

King, Edith (Los Alamos)

C

98. "The Search"

Oil on canvas 16" x 20"
STYLE: Fantasy, abstract

Kittinger, Peg Phillips

(Albuquerque)

B

99. "End of Winter, Tijeras Canyon"

Oil on panel 20" x 24"
STYLE: Objective

Koch, Arthur (Albuquerque)

100. "Infant"

Sandstone sculpture 14" high
STYLE: Expressionistic

Larsson, Karl (Santa Fe)

B C D

101. "La Cantina"

Oil on canvas 26" x 40"
STYLE: Abstract

***Latham, Barbara (Taos)**

A B C D

102. "Cactus Dancers"

Egg tempera on panel
21" x 28"
STYLE: Fantasy

Leighton, Harry (Santa Fe)

103. "Fish Bait Alley"

Oil on panel 16" x 20"
STYLE: Objective

Lemke, James W. (Santa Fe)

104. "Design for a Chessman"

Plaster sculpture 16" high
STYLE: Abstract

Lewis, William Lee (Santa Fe)

C

105. "Aspen Glade"

Oil on canvas 25" x 30"
STYLE: Objective

Lippincott, Janet (Santa Fe)

D

106. "Homestead"

Oil on canvas 22" x 26"
STYLE: Objective

Lizer, Harlan (Santa Fe)

C D

107. "Andante"

Oil on panel 25" x 39"
STYLE: Fantasy

Lockhart, Glada Trenchard

(Santa Fe)

108. "Zinnia Parasols"

Oil on canvas 25" x 28"
STYLE: Objective

***Lockwood, Ward (Taos)**

B C D

109. "Navajo Country"

Oil on canvas 33" x 48"
STYLE: Non-objective

•***Loeffler, Gisella** (Taos)

B C D

110. "Hansel and Gretel"
Enamel on panel 30" x 30"
STYLE: Objective, decorative

Longley, Bernique (Santa Fe)

C D

111. "The Courtyard"
Oil on canvas 34" x 48"
STYLE: Expressionistic,
decorative

Lopez, George (Cordova)

C

112. "Guadalupe"
Cottonwood 25" high
STYLE: Objective, primitive

Mabry, Jane (Albuquerque)

C

113. "Mrs. Manuel B. Otero"
Pastel 18" x 21"
STYLE: Objective

***Mandelman, Beatrice** (Taos)

A B C D

114. "Formations"
Oil on canvas 30" x 40"
STYLE: Abstract

Mannen, Paul (Las Cruces)

B C D

115. "Sunny Day in the
Mountains"
Oil on canvas 30" x 40"
STYLE: Abstract

Masley, Alexander

(Albuquerque)

A B C D

116. "Across the Mesa"
Water Color 14" x 19"
STYLE: Fantasy, abstract

Mathews, Millicent (Los Alamos)

C

117. "Tamarisk Trees in the
Valley"
Oil on panel 18" x 24"
STYLE: Objective

McAfee, Ila (Taos)

B C D

118. "Circus Ponies"
Oil on canvas 26" x 40"
STYLE: Fantasy, objective

McCray, Dorothy (Silver City)

B C D

119. "The Swamp"
Oil on panel 24" x 30"
STYLE: Fantasy

•***McCray, Francis** (Silver City)

B C D

120. "Fiesta"
Oil on canvas 31" x 47"
STYLE: Fantasy

McSwain, Jean (Gallup)

121. "Leaf Patterns"

Water Color 13" x 16"
STYLE: Semi-abstract,
decorative

Merritt, Dean F. (Clovis)

C

122. "The Thinker"
Wood sculpture 26" high
STYLE: Abstract

Moody, G. Joseph (Los Alamos)

123. "New Mexico Landscape"

Oil on panel 18" x 24"
STYLE: Abstract

Morang, Alfred (Santa Fe)

A B C D

124. "Santa Fe Garden"
Oil on panel 16" x 20"
STYLE: Impressionistic

Morang, Dorothy (Santa Fe)

B C D

125. "Humoresque"
Water Color and Oil 14" x 19"
STYLE: Fantasy, abstract

***Moskowitz, Ira**

A B C D

126. "Landscape"
Oil on canvas 30" x 40"
STYLE: Objective

Mott, Kay (Santa Fe)

127. "The Brass Bucket"

Oil on panel 24" x 30"

STYLE: Objective

***Moylan, Lloyd** (Santa Fe)

C D

128. "Navajo Chicken Pull"

Oil on canvas 34½" x 40"

STYLE: Abstract

Musgrave, Arthur (Santa Fe)

A C D

129. "Garden Interior"

Oil on panel 20" x 24"

STYLE: Impressionistic

Napps, Dawson (Roswell)

130. "Comanche Hills"

Casein tempera on panel
21" x 25"

STYLE: Objective

Naranjo, Harriet Fisher

(Espanola)

131. "Apache Devil Dancer"

Water Color 8" x 13"

STYLE: Indian

Naumer, Helmuth (Santa Fe)

A B C D

132. "Cerrillos, New Mexico"

Pastel 28" x 38"

STYLE: Objective

Neal, Mary Lois (Hobbs)

133. "Green Valley"

Water Color 14" x 21"

STYLE: Objective

Nelson, Margaret (Albuquerque)

134. "Shadow Lake"

Oil on panel 22" x 30"

STYLE: Abstract

Newhouse, Hope Kinzer

(Albuquerque)

C

135. "Plaza of San Juan
Pueblo"

Water Color 13" x 20"

STYLE: Objective

Nicholson, Georgia

(Albuquerque)

136. "Trout Stream—the
Pecos"

Water Color 10" x 14"

STYLE: Objective

Noble, E. (Las Vegas)

137. "Cow and Calf"

Terra cotta sculpture 10" high

STYLE: Objective

Nunn, Maidie (Los Alamos)

138. "Summer Bouquet"

Oil on panel 16" x 20"

STYLE: Expressionistic

•*O'Hara, Frederick

(Albuquerque)

A B C D

139. "Actors"

Oil on panel 24" x 32"

STYLE: Abstract

Ottesen, Thelma (La Mesa)

140. "Farm Landscape"

Water Color 15" x 20"

STYLE: Objective

Paap, Hans (Taos)

C

141. "Apache Indian"

Oil on canvas 21" x 27"

STYLE: Objective

Parrish, Jean (Albuquerque)

142. "West Indian Drummer"

Oil on panel 22" x 28"

STYLE: Objective

Pearce, Helen (Albuquerque)

C D

143. "Arrangement with
Lemon"

Oil on panel 18" x 24"

STYLE: Abstract

Peck, Eva M. (Albuquerque)

144. "Late Summer"

Oil on panel 24" x 30"

STYLE: Objective

Phillips, Bertha (Albuquerque)

145. "Red Cliffs of Sedonia"

Oil on panel 16" x 20"

STYLE: Objective

- Powell, Verne** (Albuquerque)
C
146. "Mountain Landscape"
Water Color 13" x 19"
STYLE: Abstract
- Rednick, Hermen** (Taos)
147. "Beyond the Horizon"
Oil on panel 24" x 30"
STYLE: Abstract, symbolic
- Reed, Joe** (Santa Fe)
C
148. "Portrait of Brito"
Oil on panel 16" x 20"
STYLE: Objective
- Reynolds, Charles** (Taos)
C
149. "Penitent Requiem"
Oil on panel 20" x 26"
STYLE: Expressionistic
- *Ribak, Louis** (Taos)
B C D
150. "Pictographs"
Oil on canvas 30" x 40"
STYLE: Abstract
- Ricardo, E.** (Albuquerque)
151. "La Negra Angustia"
Oil on panel 16" x 20"
STYLE: Objective
- Richards, Monte** (Santa Fe)
152. "Hills of Home"
Oil on panel 24" x 30"
STYLE: Objective
- Rodriguez, Eliseo** (Santa Fe)
153. "Still Life"
Oil on canvas 21" x 27"
STYLE: Objective
- *Rogoway, Alfred** (Taos)
A B C D
154. "Descent from the Cross"
Oil on panel 29½" x 36"
STYLE: Expressionistic
- Rose, Reuben** (Las Vegas)
C
155. "Firme"
Cedar wood sculpture 21" high
STYLE: Expressionistic
- Rush, Olive** (Santa Fe)
A B C D
156. "But Spring will Come Again"
Oil on canvas 26" x 30"
STYLE: Fantasy
- Schlater, Katharine** (Santa Fe)
C D
157. "The Shell"
Oil on canvas 20" x 24"
STYLE: Fantasy
- *Schleeter, Howard** (Albuquerque)
A B C D
158. "In Perpetuum"
Oil on panel 20" x 28"
STYLE: Abstract
- Schmidt, Albert** (Santa Fe)
B C D
159. "Still Life"
Oil on canvas 22" x 24"
STYLE: Objective, decorative
- *Schooley, Elmer** (Las Vegas)
A B C D
160. "Round House"
Oil on canvas 13" x 42"
STYLE: Semi-abstract
- Schuyler, Ted** (Albuquerque)
D
161. "Forbidden Fruit"
Oil on canvas 30" x 36"
STYLE: Objective, symbolic
- Shannon, Aileen** (Las Cruces)
B C
162. "Peonies"
Oil on canvas 25" x 27"
STYLE: Objective
- Sharp, G. Robert** (Los Alamos)
C
163. "Still Life"
Pastel 16" x 21"
STYLE: Abstract
- Shattuck, Hella Broeske** (Zuni)
C
164. "Care to Hear This?"
Oil on canvas 32" x 42"
STYLE: Objective

Shinto, Jack M. (Santa Fe)

165. "Storm"

Oil on panel 18" x 24"

STYLE: Abstract

Shonnard, Eugenie (Santa Fe)

A B C

166. "The Squirrel"

Terra cotta sculpture 10" high

STYLE: Objective, decorative

Shuster, Will (Santa Fe)

A B D

167. "Design for 'El Toro Diabolo'"

Wire sculpture 12" high

STYLE: Fantasy

Smith, Camille (Carlsbad)

168. "Iris"

Oil on canvas 24" x 30"

STYLE: Objective

Smith, Sam (Albuquerque)

B C D

169. "Carreta del Santo Muerto"

Water Color 11" x 15"

STYLE: Objective

Spohn, Clay (Taos)

170. "The Secrets of Isis"

Oil on canvas 26" x 32"

STYLE: Non-objective

Stewart, Dorothy (Santa Fe)

A C

171. "Plaza"

Oil on canvas 25" x 35"

STYLE: Expressionist;c

Stockton, Pansy (Santa Fe)

A B

172. "Spruce Tree House, Mesa Verde"

"Sun Painting" collage

18" x 24"

STYLE: Objective

Storm, Mark (Glencoe)

173. "Traveling Light"

Oil on panel 18" x 24"

STYLE: Objective

Summers, Maud G.

(Albuquerque)

174. "Landscape"

Water Color 13" x 21"

STYLE: Objective

Tait, Agnes (Santa Fe)

A B C D

175. "La Conquistadora"

Oil on panel 22½" x 34½"

STYLE: Objective, decorative

Takaoka, Canan (Santa Fe)

176. "Girl on Wire Chair"

Oil on canvas 20" x 25"

STYLE: Objective

•***Tamotzu, Chuzo (Santa Fe)**

B C D

177. "From Roof"

Oil on canvas 38" x 52"

STYLE: Objective, symbolic

Tatschl, John (Albuquerque)

A B C D

178. "Woman"

Cedar wood sculpture 25" high

STYLE: Objective

Tedford, Elsie (Columbus)

B

179. "The Proud Prince"

Oil on panel 16" x 20"

STYLE: Objective, fantasy

Thomas, M. (Taos)

180. "Des Montes"

Oil on canvas 21" x 27"

STYLE: Semi-abstract,
decorative

Thomas, Marcella (Santa Fe)

181. "San Juan de la Cruz"

Wood sculpture 18½" high

STYLE: Objective

Thomas, Richard (Santa Fe)

C

182. "Space Toy"

Construction, painted sheet

steel 2' x 2' x 2'

STYLE: Non-objective

- Tietjens, Marjorie (Las Cruces)**
C
183. "Autumn Sunshine"
Oil on panel 24" x 30"
STYLE: Objective
- Toeplitz, Charlotte (Hobbs)**
C
184. "Autumn Colors"
Water Color 19" x 26"
STYLE: Objective
- Truscott, Patsy (Columbus)**
185. "Ft. Cummins"
Pastel 11" x 14"
STYLE: Objective
- *Van Soelen, Theodore (Santa Fe)**
A B C D E
186. "Cowboy's Home"
Oil on canvas 25" x 30"
STYLE: Objective
- Van Vechten, Duane (Taos)**
187. "Swan"
Water Color 14" x 19"
STYLE: Semi-abstract,
decorative
- Velasquez, Caroline B.**
(Santa Fe)
188. "Glory of the Fall
Forest"
Water Color 15" x 21"
STYLE: Objective
- Waddell, Gale M. (Albuquerque)**
189. "Summer Still Life"
Gouache 15" x 19½"
STYLE: Objective
- *Weiss, Dorothea (Mesilla Park)**
C D
190. "The Matriarch"
Egg tempera on panel
25" x 30"
STYLE: Objective
- *Wells, Cady (Santa Fe)**
A B D
191. "Seascape"
Water Color 14" x 21"
STYLE: Abstract
- Wheelock, Warren (Santa Fe)**
A B C
192. "Saint Fiacre"
Mahogany wood sculpture
30" high
STYLE: Objective
- Wiest, Kay Van Elmendorf
(Albuquerque)**
193. "Mexicano"
Oil on canvas 18" x 22"
STYLE: Objective
- Willis, J. R. (Albuquerque)**
B C D
194. "Flower Study"
Oil on canvas 24" x 30"
STYLE: Objective
- Winks, Lucile Condit
(Los Alamos)**
C D
195. "Evening Along the Rio"
Water Color 17" x 21"
STYLE: Objective
- Yasse, Louis (Las Vegas)**
196. "Penguin Group"
Sculpture, 3" high
STYLE: Objective
- Young, Birge (Santa Fe)**
197. "Tyranny of the
Triangle"
Construction in wood, metal
and paint 40" x 67"
STYLE: Non-objective
- Young, Webb (Santa Fe)**
198. "Cerrillos Wash"
Water Color 14" x 19"
STYLE: Objective
- Young-Hunter, John (Taos)**
B C D
199. "Portrait of Helen
MacInnes"
Oil on canvas 18" x 24"
STYLE: Objective
- Zamora, Louis (Santa Fe)**
C
200. "Sandias"
Pastel 19" x 24"
STYLE: Abstract

NOTES

Geographical Index

Alamogordo

C. Bishop Bilbo (15)

Albuquerque

Kenneth M. Adams (1)
Walter Bambrook (8)
Lawrence Barrett (11)
Frederick Black (18)
Malcolm Brown (27)
Ralph Douglass (44)
Mary Lou Enlow (49)
Ralph Freeman (56)
D. V. Godard (62)
Herb Goldman (63)
Lez Haas (72)
Jake Haverstick (78)
Brand Hening (80)
Walter Hook (84)
Robert Hooton (85)
Raymond Jonson (93)
Peg Phillips Kittinger (99)
Arthur Koch (100)
Jane Mabry (113)
Alexander Masley (116)
Margaret Nelson (134)
Hope Kinzer Newhouse (135)
Georgia Nicholson (136)
Frederick O'Hara (139)
Jean Parrish (142)
Helen Pearce (143)
Eva M. Peck (144)
Bertha Phillips (145)
Verne Powell (146)
E. Ricardo (151)
Howard Schleeter (158)
Ted Schuyler (161)
Sam Smith (169)
Maud G. Summers (174)
John Tatschl (178)
Gale M. Waddell (189)
Kay Van Elmendorf Wiest (193)
J. R. Willis (194)

Alcalde

Norma Bassett Hall (73)

Carlsbad

Camille Smith (168)

Clovis

Dean F. Merritt (122)

Cochiti Pueblo

Joe H. Herrera (82)

Columbus

Elsie Tedford (179)
Patsy Truscott (185)

Cordova

George Lopez (112)

Cuba

Mae Johnson (92)

Cuervo

Louis Dale Kaiser (94)

Dexter

Oscar Greene (67)

Espanola

Harriet F. Naranjo (131)

Folsom

La Verne Hanners (75)

Gallup

Jean McSwain (121)

Glencoe

Mark Storm (173)

High Rolls

H. Forehand (54)

Hobbs

Mary Lois Neal (133)
Charlotte Toeplitz (184)

La Mesa

Thelma Ottesen (140)

Las Cruces

Richard Artschwager (2)
Mary K. Barker (10)
Kenneth Barrick (12)
Caroline Culbert (33)
Paul D. Drum (45)
State College
Paul W. Mannen (115)
State College
Ailleen Shannon (162)
Marjorie Tietjens (183)
Dorothea Weiss (190)
Mesilla Park

Las Vegas

John Dietrich (40)
Gussie Dujardin (46)
E. Noble (137)
Reuben Rose (155)
Elmer Schooley (160)
Louis Yasse (196)

Lincoln

John Boylan (23)

Los Alamos

Betty Bricker (26)
Edith King (98)
Millicent Mathews (117)
G. Joseph Moody (123)
Maidie Nunn (138)
G. Robert Sharp (163)
Lucile Condit Winks (195)

Madrid

Janey Brown Husler (89)

Roswell

Bill Greenhaw (68)
Dawson Napps (130)

Santa Cruz

Suzanne Boss (22)

Santa Fe

Barry Atwater (3)
Robert Atwood (4)
Jozef Bakos (5)
Teresa Bakos (6)
Cyrus Le Roy Baldrige (7)
Anna Barry (13)
Gustave Baumann (14)
Betty Binkley (16)
Stanley Breneiser (24)
Ina Sizer Cassidy (28)
Pedro Cervantez (29)
Philip J. C. Dark (35)
Randall Davey (36)
Clare Dieman (39)
John Dorman (43)
Fremont Ellis (48)
Louie Ewing (50)
Vivian Sloan Fiske (51)
Opal Fitzpatrick (52)
Charlotte Fowler (55)
Eleanor de Ghizé (60)
Warren Gilbertson (61)
David Gonzales (64)
William Grahn (65)
Robert Grant (66)
Wanda Gusdorf (70)
Sven Gustafson (71)
Veronica Helfensteller (79)
Velino Herrera (83)
Odon Hullenkremer (86)
Miriam Story Hurford (87)
Bessie Hurt (88)
Alfred Israel (90)
Bernice King (97)
Karl Larsson (101)
Harry Leighton (103)
James W. Lemke (104)
William Lee Lewis (105)
Janet Lippincott (106)
Harlan Lizer (107)
Glada Trenchard Lockhart (108)
Bernique Longley (111)
Alfred Morang (124)
Dorothy Morang (125)
Ira Moskowitz (126)
Kay Mott (127)
Lloyd Moylan (128)
Arthur Musgrave (129)
Helmuth Naumer (132)

Joe Reed (148)
Monte Richards (152)
Eliseo Rodriguez (153)
Olive Rush (156)
Katharine Schlater (157)
Albert Schmidt (159)
Jack M. Shinto (165)
Eugenie Shonnard (166)
Will Shuster (167)
Dorothy Stewart (171)
Pansy Stockton (172)
Agnes Tait (175)
Canan Takaoka (176)
Chuzo Tamotzu (177)
Marcella Thomas (181)
Richard Thomas (182)
Theodore Van Soelen (186)
Caroline Velasquez (188)
Cady Wells (191)
Warren Wheelock (192)
Birge Young (197)
Webb Young (198)
Louis Zamora (200)

Silver City

Dorothy McCray (119)
Francis McCray (120)

Taos

Patrocino Barela (9)
Emil Bisttram (17)
Kimball Blood (19)
Ernest L. Blumenschein (20)
Helen Blumenschein (21)
Dorothy E. Brett (25)
Howard Cook (31)
Ruby Corput (32)
Richard Daley (34)
Lindsey Decker (37)

Mabel Degen (38)
Rex Dolmith (41)
William H. Dominish (42)
Ted Egri (47)
Joseph Fleck (53)
Louise Ganthiers (58)
Leon Gaspard (59)
Robert Gribbroek (69)
Buff Haney (74)
Cliff Harmon (76)
Pauline Harper (77)
E. Martin Hennings (81)
Arthur R. Jacobson (91)
Noula Karavas (95)
Vesta Kiker (96)
Barbara Latham (102)
Ward Lockwood (109)
Gisella Loeffler (110)
Beatrice Mandelman (114)
Ila McAfee (118)
Hans Paap (141)
Hermen Rednick (147)
Charles Reynolds (149)
Louis Ribak (150)
Alfred Rogoway (154)
Clay Spohn (170)
M. Thomas (180)
Duane Van Vechten (187)
John Young-Hunter (199)

Truth or Consequences

Gerda Frey (57)

Tucumcari

Iris Chew (30)

Zuni

Hella Broeske Shattuck (164)

Index of Styles

Objective

Work done from the object with representational intent. May be qualified as *illustrative, stylized, decorative, with exaggeration, with distortion, with abstraction, etc.*

- Atwater, Barry (3)
Atwood, Robert (4)
Baldrige, Cyrus Le Roy (7)
Bambrook, Walter (8)
Barela, Patrocino (9)
Barker, Mary K. (10)
Barry, Anna (13)
Baumann, Gustave (14)
Bilbo, C. Bishop (15)
Blumenschein, Ernest L. (20)
Blumenschein, Helen (21)
Brett, Dorothy (25)
Bricker, Betty (26)
Cervantez, Pedro L. (29)
Chew, Iris (30)
Corput, Ruby H. (32)
Culbert, Caroline (33)
Davey, Randall (36)
Degen, Mabel (38)
Dieman, Clare (39)
Dietrich, John (40)
Douglass, Ralph (44)
Drum, Paul D. (45)
Dujardin, Gussie (46)
Ellis, Fremont (48)
Ewing, Louie (50)
Fitzpatrick, Opal (52)
Fleck, Joseph (53)
Freeman, Ralph L. (56)
Frey, Gerda (57)
Gaspard, Leon (59)
Ghizé, Eleanor de (60)
Godard, D. V. (62)
Gonzales, David (64)
Greenhaw, Bill (68)
Hall, Norma Bassett (73)
Hanners, La Verne (75)
Haverstick, Jake (78)
Hening, Brand (80)
Hennings, E. Martin (81)
Hullenkremer, Odon (86)
Hurford, Miriam Story (87)
Hurt, Bessie (88)
Husler, Janey Brown (89)
Kiker, Vesta (96)
King, Bernice (97)
Kittinger, Peg Phillips (99)
Leighton, Harry (103)
Lewis, William Lee (105)
Lippincott, Janet (106)
Lockhart, Glada Trenchard (108)
Loeffler, Gisella (110)
Lopez, George (112)
Mabry, Jane (113)
Mathews, Millicent (117)
Moskowitz, Ira (126)
Mott, Kay (127)
Napps, Dawson (130)
Naumer, Helmuth (132)
Neal, Mary Lois (133)
Newhouse, Hope Kinzer (135)
Nicholson, Georgia (136)
Noble, E. (137)
Ottesen, Thelma (140)
Paap, Hans (141)
Parrish, Jean (142)
Peck, Eva M. (144)
Phillips, Bertha (145)
Reed, Joe (148)
Ricardo, E. (151)
Richards, Monte (152)
Rodriguez, Eliseo (153)
Schmidt, Albert (159)
Schuyler, Ted (161)
Shannon, Aileen (162)
Shattuck, Hella Broeske (164)
Shonnard, Eugenie (166)
Smith, Camille (168)
Smith, Sam (169)
Stockton, Pansy (172)
Storm, Mark (173)
Summers, Maud G. (174)
Tait, Agnes (175)
Takaoka, Canan (176)
Tamotzu, Chuzo (177)
Tatschl, John (178)
Tedford, Elsie (179)
Thomas, Marcella (181)
Tietjens, Marjorie (183)
Toeplitz, Charlotte (184)

Truscott, Patsy (185)
Van Soelen, Theodore (186)
Velasquez, Caroline B. (188)
Waddell, Gale M. (189)
Weiss, Dorothea (190)
Wheelock, Warren (192)
Wiest, Kay Van Elmendorf (193)
Willis, J. R. (194)
Winks, Lucile Condit (195)
Young, Webb (198)
Young-Hunter, John (199)

Impressionistic

Objective painting which renders instantaneous impressions of objects under natural light or in motion. Usually employs lighter and higher-keyed color and characterized by indistinct forms.

Morang, Alfred (124)
Musgrave, Arthur (129)

Expressionistic

Objective painting (or sculpture) with pronounced exaggeration or distortion for emotional effect. Usually employs heavier and more intense color and characterized by bold forms.

Barrick, Kenneth (12)
Binkley, Betty (16)
Black, Frederick (18)
Egri, Ted (47)
Fowler, Charlotte (55)
Grant, Robert (66)
Greene, Oscar (67)
Harper, Pauline (77)
Johnson, Mae (92)
Koch, Arthur (100)
Longley, Bernique (111)
Nunn, Maidie (138)
Reynolds, Charles (149)
Rogoway, Alfred (154)
Rose, Reuben (155)
Stewart, Dorothy (171)

Abstract

Painting or sculpture which employs the essential outlines or forms of objects as design elements without any necessary realistic resemblance to the object. May be qualified as *semi-abstract*, *decorative*, *stylized*, *geometric*, etc.

Adams, Kenneth M. (1)
Artschwager, Richard (2)
Barrett, Lawrence (11)
Blood, Kimball (19)
Boss, Suzanne (22)

Cook, Howard (31)
Daley, Richard (34)
Dark, Philip J. C. (35)
Decker, Lindsey (37)
Dolmith, Rex (41)
Dominish, William H. (42)
Enlow, Mary Lou (49)
Ganthiers, Louise (58)
Gilbertson, Warren (61)
Gustafson, Sven (71)
Haney, Buff (74)
Harmon, Cliff (76)
Hook, Walter (84)
Hooton, Robert (85)
Kaiser, Louis Dale (94)
Karavas, Noula (95)
Larsson, Karl (101)
Lemke, James W. (104)
Mandelman, Beatrice (114)
Mannen, Paul (115)
McSwain, Jean (121)
Merritt, Dean F. (122)
Moody, G. Joseph (123)
Moylan, Lloyd (128)
Nelson, Margaret (134)
O'Hara, Frederick (139)
Pearce, Helen (143)
Powell, Verne (146)
Rednick, Hermen (147)
Ribak, Louis (150)
Schleeter, Howard (158)
Schooley, Elmer (160)
Sharp, G. Robert (163)
Shinto, Jack M. (165)
Thomas, M. (180)
Van Vechten, Duane (187)
Wells, Cady (191)
Zamora, Louis (200)

Non-Objective

Painting or sculpture which renders compositions conceived entirely in the mind and free from any reference to objects of nature.

Bisttram, Emil (17)
Grahm, William (65)
Gusdorf, Wanda (70)
Haas, Lez (72)
Israel, Alfred (90)
Jonson, Raymond (93)
Lockwood, Ward (109)
Spohn, Clay (170)
Thomas, Richard (182)
Young, Birge (197)

Fantasy

Painting or sculpture which portrays imaginary scenes and fantastic subjects in incongruous settings such as occur in dreams.

Bakos, Jozef (5)
Bakos, Teresa (6)
Boylan, John (23)
Breneiser, Stanley (24)
Cassidy, Ina Sizer (28)
Dorman, John (43)
Fiske, Vivian Sloan (51)
Gribbroek, Robert (69)
Helfensteller, Veronica (79)
Jacobson, Arthur R. (91)
King, Edith (98)
Latham, Barbara (102)
Lizer, Harlan (107)

Masley, Alexander (116)
McAfee, Ila (118)
McCray, Dorothy (119)
McCray, Francis (120)
Morang, Dorothy (125)
Rush, Olive (156)
Schlater, Katharine (157)
Shuster, Will (167)

Indian

Work of the Southwestern Indian Renaissance of the past quarter century.

Herrera, Joe H. (82)
Herrera, Velino (83)
Naranjo, Harriet F. (131)

Committee Members

KENNETH M. ADAMS, 643 N. Cedar, Albuquerque
Member of Art Advisory Committee

PAINTER: oil, water color. **PRINT MAKER:** lithography. **STYLE:** objective, semi-abstract. **STUDIED:** Art Students League, N. Y. C.; in France and Italy. **EXHIBITED:** nationally. **REPRESENTED:** in many important collections including Whitney Museum of American Art, N. Y. C.; Library of Congress, Washington, D. C.; and Museum of New Mexico. **AWARDS:** several of national importance. Associate, National Academy of Design. Selected to represent New Mexico in International Business Machines Corporation collection of contemporary American art. Professor of Art, University of New Mexico.

ERNEST L. BLUMENSCHNEIN, Box 256, Taos
Member of Committee on Selections

PAINTER: oil, water color. **STYLE:** objective, individualized. **STUDIED:** Cincinnati Art Academy; Art Students League of New York; with Constant and Laurens in Paris. **EXHIBITED:** internationally. **REPRESENTED:** in many leading collections including Metropolitan Museum of Art and Museum of Modern Art, N. Y. C.; International Business Machines Corporation collection of contemporary art. **AWARDS:** numerous of national distinction. Honorary Master of Fine Arts, University of New Mexico, 1947; Honorary Fellow in Art, Museum of New Mexico, 1948. **MEMBER OF:** National Academy of Design; American Water Color Society; Audubon Artists; Taos Art Association.

HOWARD COOK, Box 73, Ranchos de Taos
Member of Art Advisory Committee

PAINTER: pastel, oil, water color; murals in true fresco. **PRINT MAKER:** etching, lithography, engraving. **STYLE:** objective, abstract. **STUDIED:** Art Students League of New York. **EXHIBITED:** internationally. **REPRESENTED:** in many leading collections of the United States and Europe, including Metropolitan Museum of Art and Museum of Modern Art, N. Y. C.; British Museum, London; and others. **AWARDS:** numerous of national distinction. World War II artist correspondent for *Colliers Magazine*. Member of jury of selection, "American Painting Today," Metropolitan Museum of Art, 1950. **MEMBER OF:** Artists Equity; Society of American Etchers; National Academy of Design; Art Students League.

JOHN F. DIETRICH, 1011 Seventh St., Las Vegas
Member of Art Advisory Committee

CRAFTSMAN: jewelry, ceramics, leather, weaving, wood. **EDUCATOR.** **STUDIED:** University of Chicago; University of Iowa; Ohio State University. **EXHIBITED:** nationally. **REPRESENTED:** in a number of collections including Ohio State University, Northeast Iowa Art Association, and New Mexico Highlands University. Head of Arts and Crafts Department, New Mexico Highlands University, since 1946. **MEMBER OF:** National Education Association; Western Art Association; N. M. Art Education Association, N. M. Alliance for the Arts.

RALPH DOUGLASS, 3308 Loma Vista Pl., Albuquerque
Chairman of Hanging Committee

PAINTER: water color, oil. **PRINT MAKER:** lithography. **ILLUSTRATOR, CALLIGRAPHER, CARTOONIST.** **STUDIED:** Art Institute of Chicago; Julian Academy, Paris; New York School of Fine and Applied Arts; Art Students League of New York. **EXHIBITED:** nationally. **REPRESENTED:** in important collections. **MEMBER OF:** Artists Equity Association; Delta Phi Delta (honorary); Washington Water Color Club; New Mexico Art League. Professor of Art, University of New Mexico, since 1929 (Head of the Art Department, 1936-46). Author, "Calligraphic Lettering with Wide Pen and Brush," Watson-Guption Publications, Inc., New York, 1949.

CLIFF HARMON, Las Cruces St., Taos
Member of Hanging Committee

PAINTER: oil, enamel. **STYLE:** objective, abstract, non-objective. **STUDIED:** Bistram School of Fine Art, Taos; Black Mountain College, N.C.; Taos Valley Art School. **EXHIBITED:** throughout the Southwest and in California. **MEMBER OF:** La Fonda Gallery group.

BRADLEY P. KIDDER, 900 Garcia, Santa Fe
Member of Hanging Committee

Native of Colorado. Resident of New Mexico since 1934. Studied at Colorado College (B.A. degree); two years in architecture at University of Pennsylvania. Practicing architect. Past President, New Mexico Chapter, American Institute of Architects. Secretary, Board of Examiners for architecture in New Mexico.

DOEL REED, Art Department, A&M College, Stillwater, Okla.
Chairman of Committee on Selections

PAINTER: oil, water color. **PRINT MAKER:** etching. **STUDIED:** Art Academy of Cincinnati; painting trips to France and Mexico. **EXHIBITED:** nationally in leading galleries. **REPRESENTED:** in many important collections, including: Philadelphia Art Museum; Carnegie Institute of Fine Arts; Honolulu Academy of Fine Arts; John Herron Art Institute; Dallas Museum of Fine Arts; and others. **AWARDS:** a number of national importance, including: First award for oil, Tulsa Art Association, 1935; First award for prints, Philbrook Art Center, 1946; First award for water color, John Herron Art Institute, 1948; Henry B. Shope Prize, Society of American Etchers, N. Y., 1949; Applebaum award, Audubon Artists, N. Y., 1950; purchase award for oil, Mid-America Exhibition, Nelson Gallery, Kansas City, 1951; and others. **MEMBER OF:** National Academy of Design (Associate); Society of American Etchers; Chicago Society of Etchers; Albany Print Club; The Society of Indiana Print Makers; Philadelphia Water Color Club; Audubon Artists; California Water Color Society.

HOWARD B. SCHLEETER, Box 112, Old Albuquerque
Member of Art Advisory Committee

PAINTER: oil, water color, gouache. **PRINT MAKER:** wood engraving, monoprint. **STYLE:** abstract, fantasy. **STUDIED:** Albright Art School, Buffalo, N. Y. **EXHIBITED:** nationally. **REPRESENTED:** in several collections including Encyclo-

paedia Britannica; Institute of Religion, Cedar City, Utah; and with murals in public buildings. AWARDS: several. Fellowship from Research Studio, Maitland, Fla. President of N. M. Art League, 1940. Visiting Professor of Art, University of N. M. summer session, 1950.

G. ROBERT SHARP, 2271-A 48th St., Los Alamos
Member of Hanging Committee

PAINTER: water color, tempera, pastel, gouache. STYLE: abstract, impressionistic, expressionistic, non-objective. STUDIED: University of Illinois. EXHIBITED: nationally, in Illinois Artist Association and University of Illinois traveling exhibitions. Architect-designer. Included in 38th Annual Exhibition for New Mexico Artists, Museum of New Mexico.

RICHARD K. THOMAS, 713½ Canyon Rd., Santa Fe
Member of Hanging Committee

PAINTER: oil, tempera. SCULPTOR: constructions and mobiles in wood, glass, plastic, metal. STYLE: non-objective. Designer of fabrics, glass, furniture. STUDIED: University of Kansas; Art Center School, Los Angeles, Calif.; Art Institute of Chicago; Highlands University, Las Vegas; Hiler College, Santa Fe. EXHIBITED: in New Mexico. REPRESENTED: in private collections.

THEODORE VAN SOELEN, Box 1117, Santa Fe
Member of Art Advisory Committee

PAINTER: oil, tempera, sanguine. PRINT MAKER: lithography. STYLE: objective. STUDIED: St. Paul Art Institute, Minn.; Pennsylvania Academy of Fine Arts. EXHIBITED: nationally. REPRESENTED: in a number of important collections, including Pennsylvania Academy of Fine Arts; Museum of New Mexico; National Academy of Design, N. Y. C.; and with murals in public buildings. AWARDS: numerous of national distinction. Academician, National Academy of Design.

A. VERNER WASSON, 1524 Canyon Rd., Santa Fe
Member of Committee on Selections

Native of Pennsylvania. Resident of New Mexico since 1946. STUDIED: Colgate University (B.A. degree); University of Pittsburgh Law School. Served as commissioned officer in World Wars I and II. Member of Pennsylvania Bar Association. President of Santa Fe Sinfonietta and Choral Society. Banker, First National Bank, Santa Fe. Director, Southwestern Investment Association.

REPRODUCTIONS



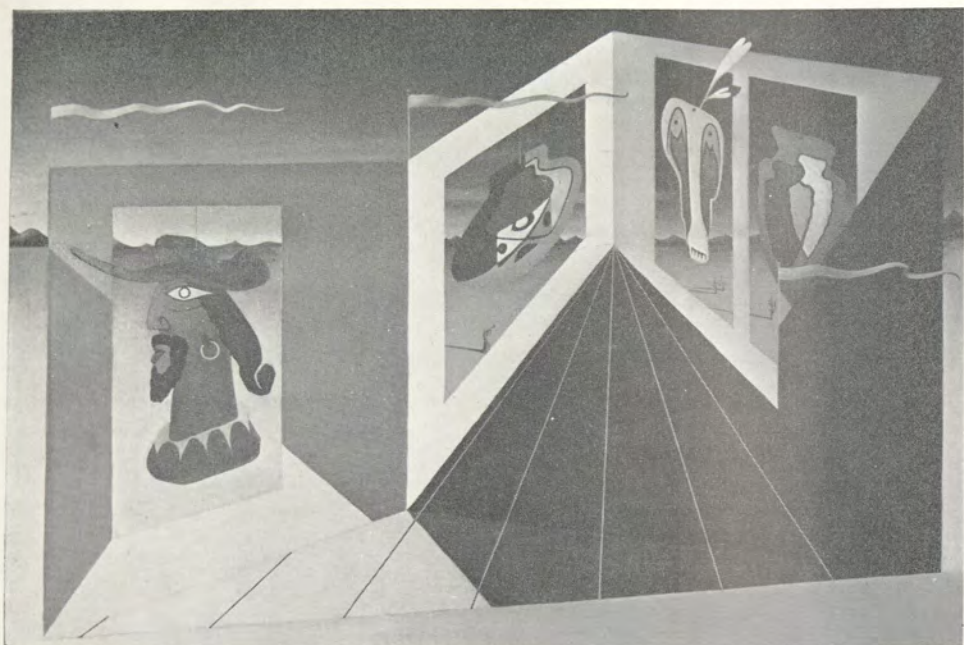
FREDERICK O'HARA
"Actors" *Oil* (139)
Purchase



LOUISE GANTHIERS
"Kosharis" *Encaustic* (58)

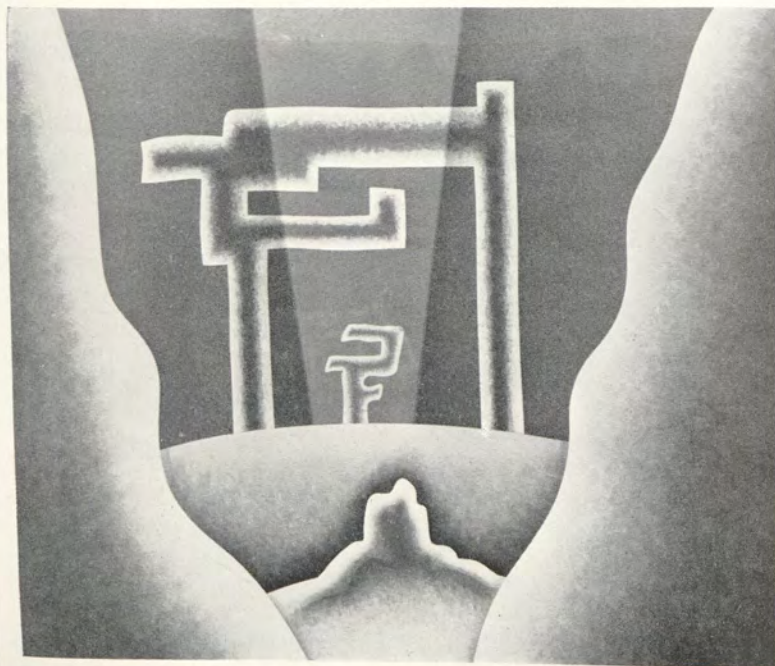
CHUZO TAMOTZU
"From Roof" *Oil* (177)





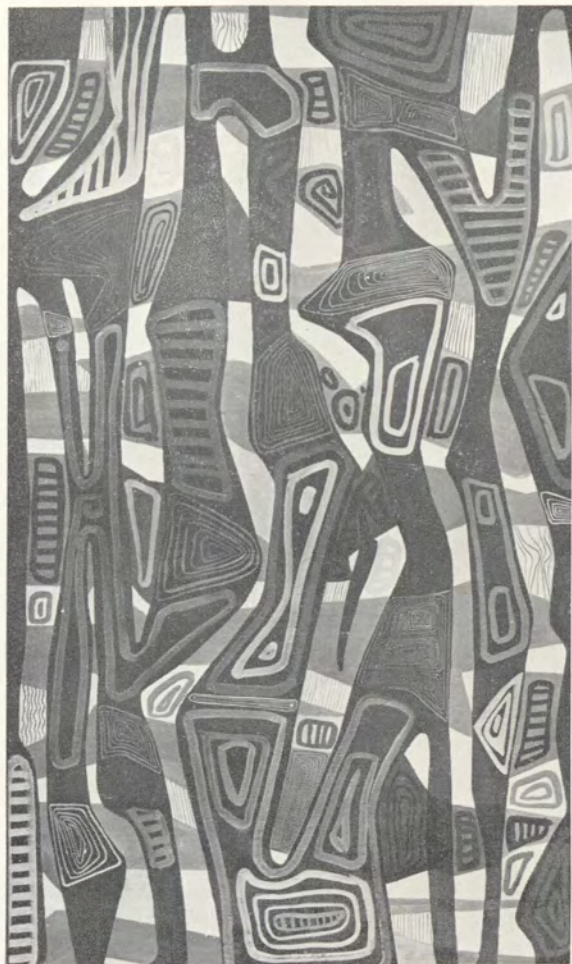
FRANCIS McCRAY
"Fiesta" Oil (120)

RAYMOND JONSON
"Watercolor No. 1, 1951" Water Color (93)



LEZ HAAS

"Composition in Southeastern
Motif" *Oil* (72)



KIMBALL BLOOD

"Still Life" *Oil* (19)





WARREN WHEELOCK
"Saint Fiacre" *Wood* (192)

MIRIAM HURFORD
"Tesuque Valley" *Water Color* (87)





JOZEF BAKOS
"Lightning" Oil (5)

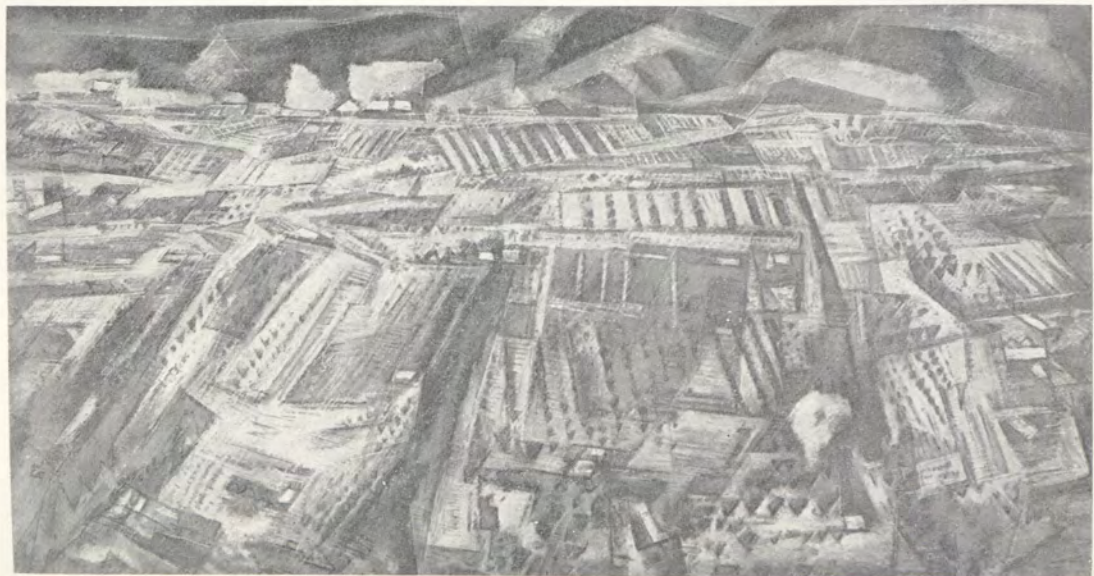
KENNETH BARRICK
"Motherless Child" Casein Tempera (12)





DOROTHEA WEISS
"The Matriarch" *Egg Tempera* (190)

HOWARD COOK
"Velarde in Autumn" *Pastel* (31)



ELISEO RODRIGUEZ
"Still Life" *Oil* (153)



GISELLA LOEFFLER
"Hansel and Gretel" *Enamel* (110)





MUSEUM OF NEW MEXICO ART GALLERY

