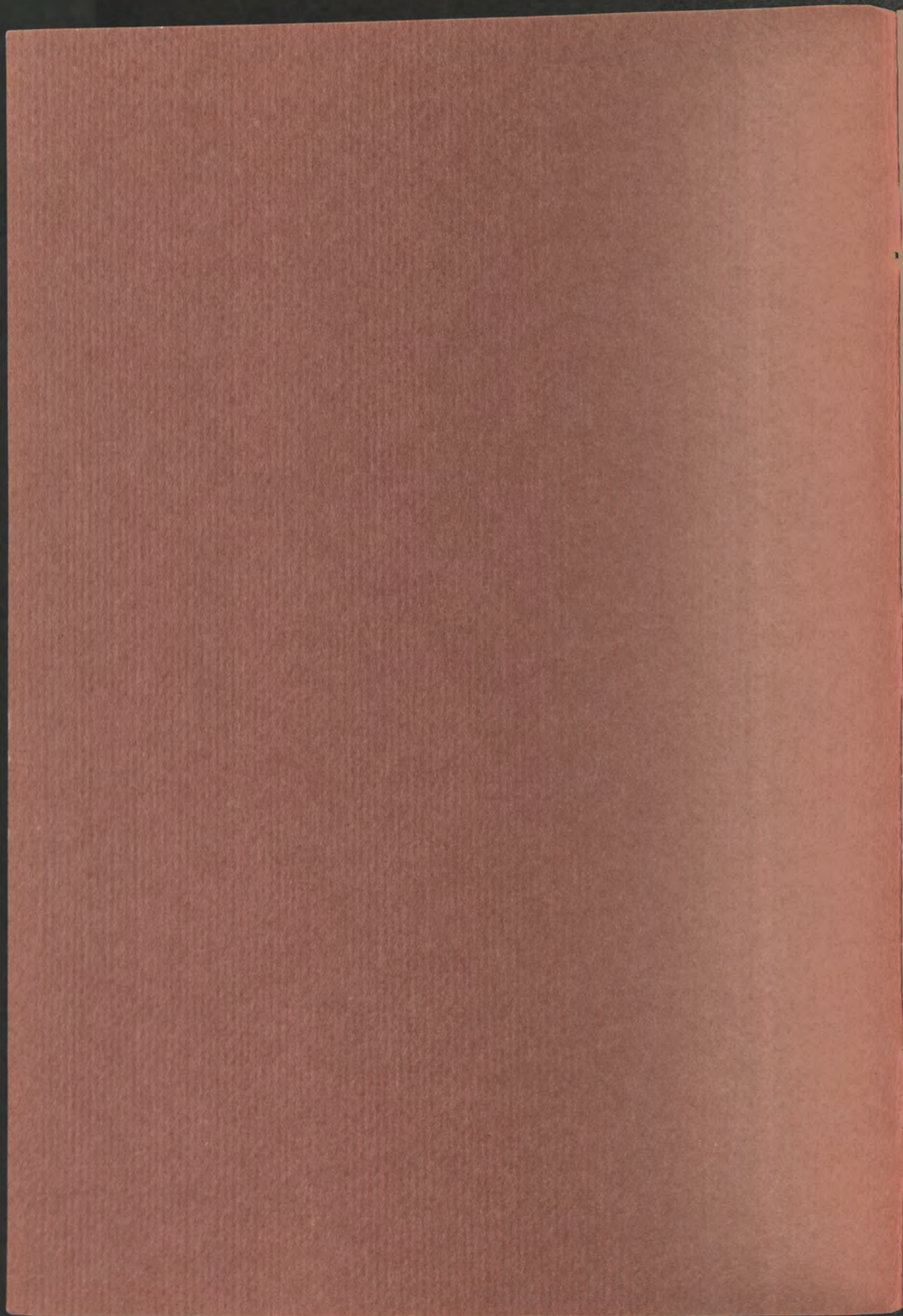


1954

ANNUAL EXHIBITION
FOR NEW MEXICO ARTISTS

MUSEUM OF NEW MEXICO ART GALLERY



**1954 ANNUAL EXHIBITION
FOR NEW MEXICO ARTISTS**

**Museum of New Mexico
Art Gallery
Santa Fe**

June 13 thru July 31, 1954



ELMER SCHOOLEY "Fences" (84)
Purchase

The Jury

ROBERT M. CHURCH

2304 Osage Ave., Tulsa, Okla.

MUSEUM DIRECTOR. STUDIED: University of Michigan; University of California (B.A.); Notre Dame, Columbia, and Cornell Universities. Contributor to *College Art Journal*, *Western Arts Quarterly*, *San Francisco Art Association Bulletin*; and others. Lectures on art history, contemporary art and architecture. MEMBER OF: College Art Association of America; American Association of Museums. Assistant Curator, Curator, San Francisco Museum of Art, 1945-50; Director, Philbrook Art Center, Tulsa, Okla., 1950- .

TOM BENRIMO

Ranchos de Taos, N. M.

PAINTER. Resident of New Mexico since 1939. STUDIED: Art Students League of New York. EXHIBITED: in leading galleries throughout the United States. REPRESENTED: Art Institute of Chicago; Whitney Museum of American Art; University of Illinois; and elsewhere. AWARDS: Art Directors Medal, 1939; purchase prize, University of Illinois, 1952. Invited to show in Whitney Museum's "1952 Annual of Contemporary American Painting." One of three New Mexico artists included in "Younger American Painters" exhibit at Solomon R. Guggenheim Museum, New York City, 1954.

KENNETH R. BARRICK

Star Route, Box 11-A, Las Cruces, N. M.

PAINTER. Resident of New Mexico since 1949. STUDIED: University of Illinois (B.F.A.); University of Iowa (M.A.). EXHIBITED in Illinois, Texas and New Mexico. Instructor in art, Otterbein College, Westerville, Ohio, 1941-42; Maryville College, Maryville, Tennessee, 1942-44; New Mexico College of Agriculture and Mechanic Arts since 1949.

Estate of Eugenie F. Shonnard 7/79

The 1954 Annual

With this show the inauguration of an Annual Exhibition for New Mexico Artists based on artistic merit selected by an art jury becomes an accomplished fact. While the 1951, 1952 and 1953 Annuals were selected shows, they actually constitute a transition between the free-for-all, non-jury type of exhibition of the "Fiesta Show" and the present jury type show of the Annual. To meet the demands from various New Mexico artists for both types, the Museum feels that two distinct exhibitions are necessary. Hence this new juried Annual—to be held in June each year. The well known, free-for-all "Fiesta Show" will be continued during the Santa Fe Fiesta season each year. For the 1954 Annual, quotas of one hundred paintings and ten sculptures were fixed in the announcement of the exhibition. In making the selections to fill these quotas from the two hundred entries submitted, the jury expressed its feeling that a number of works had to be admitted for exhibition which otherwise would not have been chosen had there been no fixed quotas. It therefore urged that such quotas not be imposed in the future. In recognition, the Museum Art Advisory Committee, in its annual meeting held a few days following the jury meeting, eliminated the quota system from future Annuals.

All resident New Mexico artists were invited to participate in the exhibition with all media in painting and sculpture eligible for entry. One hundred paintings and ten sculptures were selected for exhibition. The jury also selected a group of thirty paintings for the special traveling show and recommended ten paintings and one sculpture for purchase for the Museum's Permanent Collection. The purchase from these recommendations was awarded by the Art Advisory Committee.

As to stylistic trend in the 1954 Annual, perhaps the most noticeable shift is away from the representational toward the non-objective treatment. The proportion of representational paintings shows a decrease from about 55% in 1952 to 40% in the current Annual, whereas the non-

objective has increased from 5% to around 15%. Abstraction continues its upward trend—21% in 1951; 22% in 1952; 27% in 1953; 31% in 1954. The expressionistic approach drops from an 8% high in 1953 to an almost negligible 3% in 1954, while not a single sur-real painting appears in the current show. As to subject, nearly one third of the exhibition is landscape with about one fifth "amorphous" mood painting. Portraiture, satire, religious and decorative subjects all stand at a normally small proportion of less than 10% each.

The Museum notes with pleasure the increasing participation of Spanish-American artists in the Annual and hopes that the future will show a similar increase in interest among Indian artists.

REGINALD FISHER
Director of Fine Arts

Catalog of the Exhibition

- ★ Selected for national traveling exhibition.
- Represented in permanent collection of Museum.

★ **Alesch, Eugene** (Albuquerque)

1. "The Currents of Thought"
Casein Tempera 24"x30"

Atwater, Barry (Santa Fe)

2. "Sunlight and Shadow—
Ghost Ranch"
Oil on panel 24"x30"

● **Bakos, Jozef** (Santa Fe)

3. "Old Apple Orchard"
Water Color 22"x29"

★ **Bakos, Teresa** (Santa Fe)

4. "Pink Peacock"
Tempera 20"x24"

Baldrige, Cyrus LeRoy

(Santa Fe)

5. "Last View of Old Lamy"
Oil on canvas 22"x28"

★ **Barrick, Kenneth** (Las Cruces)

6. "Scared of Dying"
Oil on panel 24"x30"

● **Baumann, Gustave** (Santa Fe)

7. "Prelude to Strange Adventure"
Oil on panel 21"x21"

★ **Benrino, Tom** (Taos)

8. "The Hollow Man"
Oil on panel 48"x48"

Berliner, Gert (Chupadero)

9. "Composition"
Oil on canvas 30"x36"



TOM BENRIMO "The Hollow Man" (8)

Danfelser, Beth (Albuquerque)

21. "Flowers"
Tempera 16"x21"

● **Dasburg, Andrew** (Taos)

22. "Llano—Spring"
Pastel 17"x22"

★● **Davey, Randall** (Santa Fe)

23. "At the Starting Gate"
Encaustic on panel 22"x30"

Dieman, Clare (Santa Fe)

24. "Noli Me Tangere"
Wood Sculpture 19" high

★ **Douglass, Ralph** (Albuquerque)

25. "In the Morning"
Oil on canvas 25"x30"

Dryce, Tom (Santa Fe)

26. "Hilltown"
Oil and Tempera on panel
16"x20"

★ **Du Jardin, Gussie** (Las Vegas)

27. "After Vespera"
Oil on canvas 17½"x40"

Durnell, Delores (Santa Fe)

28. "The Bird"
Cement Sculpture 12" high

★ **Egri, Ted** (Taos)

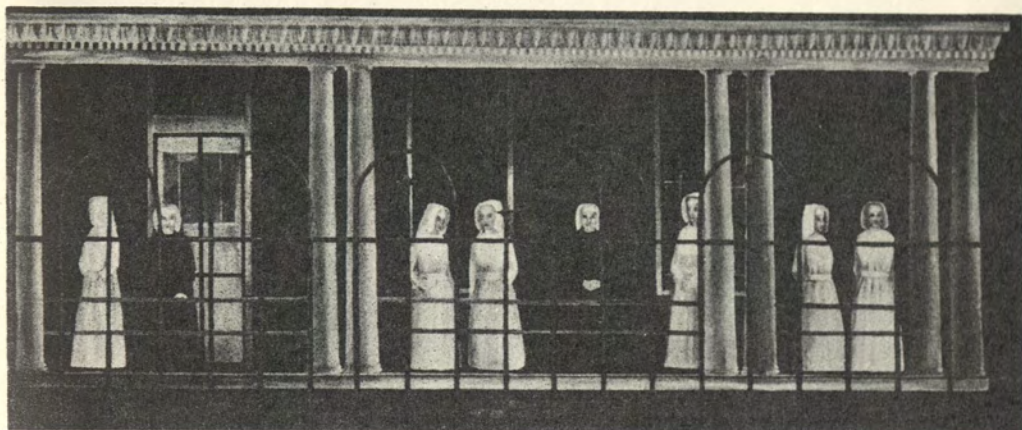
29. "Edge of Life"
Oil on canvas 25"x42"

Ellett, Jean (Albuquerque)

30. "Walls and Roofs"
Casein Tempera and Oil Glaze
on panel 16"x20"

● **Ellis, Fremont** (Santa Fe)

31. "Canoncito"
Oil on canvas 25"x30"



GUSSIE DUJARDIN "After Vespers" (27)

RECOMMENDED FOR PURCHASE

Fiske, Vivian Sloan (Santa Fe)

32. "Galisteo"
Oil on canvas 20"x26"

Fitzpatrick, Opal (Santa Fe)

33. "Storm over Monument
Valley"
Pastel 16"x22½"

Fleck, Joseph A. (Taos)

34. "Crucifixion"
Tempera and Oil 30"x34½"

Flint, Elaine (Las Cruces)

35. "New Mexico Desert Scene"
Water Color 17"x21½"

Fowler, Charlotte (Santa Fe)

36. "Service Basin, Santa Fe"
Oil on panel 27"x32"

● **Ganthiers, Louise** (Taos)

37. "Turtle Dance"
Encaustic on canvas 38"x40"

★ **Garver, Jack** (Albuquerque)

38. "Whirlwind Tree"
Oil on canvas 34"x40"

★ ● **Gaspard, Leon** (Taos)

39. "To the Taos Christmas
Dance—Apaches"
Oil on canvas 24"x32"

Ghizé, Eleanor de (Santa Fe)

40. "City"
Oil on panel 16"x24"

Gonzales, David R. (Santa Fe)

41. "Sierra Winter"
Water Color 14½"x19"

Greene, Oscar (Dexter)

42. "Evening"
Plaster Sculpture 25" high



DOROTHEA P. WEISS "La Posada" (102)

RECOMMENDED FOR PURCHASE

Haney, Buff (Taos)

43. "Go Down Moses"
Oil on canvas 30"x39"

● **Helfensteller, Veronica**
(Santa Fe)

44. "A Station of the Cross"
Mixed Media 22"x25"

Hill, Adelina Ortiz de
(Tucumcari)

45. "Sangre de Cristo"
Oil on panel 18"x24"

Hullenkremer, Odon (Santa Fe)

46. "Typical Santa Fe"
Oil on panel 20"x24"

● **Hurd, Peter** (San Patricio)

47. "Spring"
Water Color 22"x28"

★ **Hurford, Miriam Story**

(Santa Fe)

48. "Landscape"
Water Color 20½"x28"

Jacobson, Arthur (Taos)

49. "Dancing Koshare"
Encaustic on canvas 28"x36"

Jacobson, Walter E. (Gallup)

50. "Old Mill Door"
Oil on canvas 17"x22"

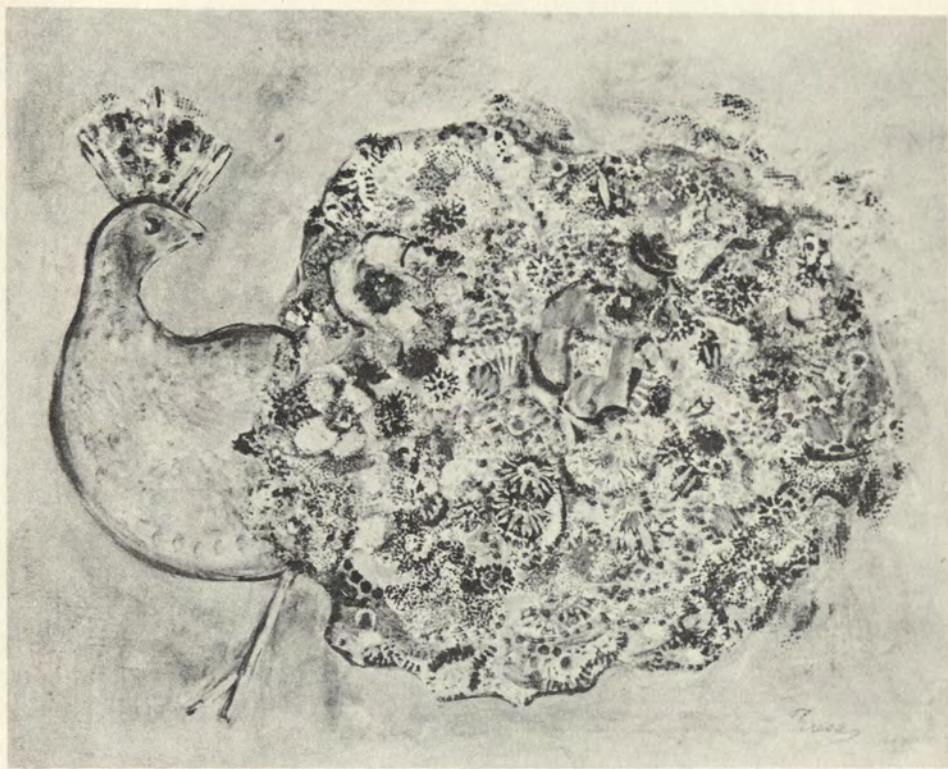
● **Jonson, Raymond**

(Albuquerque)

51. "Tempera No. 6, 1954"
Casein Tempera on panel
22"x29"

● **Keener, Anna E.** (Santa Fe)

52. "Magic Moon"
Oil on panel 16"x24"



TERESA BAKOS "Pink Peacock" (4)

RECOMMENDED FOR PURCHASE

★ **Kercheville, Christina**

(Albuquerque)

53. "Pi"
Oil on canvas 20"x24"

King, Edith B. (Los Alamos)

54. "Composition III"
Oil on panel 18"x24"

★ **Larrinaga, Mario** (Taos)

55. "Gerona"
Oil on panel 24"x27"

● **Latham, Barbara** (Taos)

56. "Lichen"
Oil on panel 20"x24"

★ **Leighton, Harry** (Albuquerque)

57. "Alley Spring"
Oil on canvas 22"x27"

Leonard, Oneita Jean

(Albuquerque)

58. "Days Gone By"
Oil on panel 18"x24"

Lockwood, Ward (Taos)

59. "Southwest No. 6"
Oil

★ ● **Longley, Bernique** (Santa Fe)

60. "Guitars"
Oil on canvas 42"x48"

Mack, Rose Mary

(Albuquerque)

61. "Spring"
Oil on canvas 32"x36"

★ ● **Mandelman, Beatrice** (Taos)

62. "Squash"
Oil on canvas 30"x38"

★ **Mannen, Paul W.** (Las Cruces)

63. "Mother and Child—
Sandstorm"
Oil on canvas 30"x40"



HOWARD COOK "Clowns and Ancestors" (19)

RECOMMENDED FOR PURCHASE

McAfee, Ila (Taos)

64. "The Trail to Summer Range"
Oil on canvas 35"x44"

McCray, Dorothy (Silver City)

65. "The Lechers"
Oil on panel 24"x29½"

★ **McKinney, John** (Santa Fe)

66. "The Bird"
Oil and Casein Tempera on
panel 17"x32"

● **Mead, Roderick** (Carlsbad)

67. "Tortilla Maker"
Oil on canvas 30"x40"

● **Morang, Dorothy** (Santa Fe)

68. "Death of a King"
Oil and Tempera on panel
24"x36"

Mott, Kay (Santa Fe)

69. "R.F.D. New Mexico"
Oil on canvas 24"x30"

Moylan, Lloyd (Santa Fe)

70. "Star Hill"
Oil on panel 22"x27"

Murphey, Mimi (Albuquerque)

71. "St. Stephen"
Terra Cotta Sculpture 14"
high

● **Naumer, Helmuth** (Santa Fe)

72. "High Country"
Pastel 22"x28"

Ribak, Louis (Taos)

73. "Black Bird with Rocks"
Oil on canvas 32"x40"

Richards, Marian B. (Santa Fe)

74. "Acequia Madre"
Oil on panel 24"x30"



JOHN TATSCHL "Urchin" (97)

RECOMMENDED FOR PURCHASE

★ **Rodriguez, Eliseo** (Santa Fe)

75. "Ladies Weep over Jesus"
Oil on canvas 30"x36"

★● **Rogoway, Alfred** (Taos)

76. "The Land and the Sea"
Oil on panel 36"x48"

Rublee, Bertha Louise

(Sandoval)

77. "Grand March Polly Wog"
Oil on panel 20"x24"

● **Rush, Olive** (Santa Fe)

78. "Deer Under the Sun"
Water Color 18"x22½"

Sadock, Katharine Van Meter

(Albuquerque)

79. "Moonrise on Riverside Drive"
Water Color 18"x27"

Sahula-Dycke (Santa Fe)

80. "Constancy, Strength, and a
Journey"
Oil on canvas 30"x35"

Schlater, Katharine (Santa Fe)

81. "The Twins"
Oil on panel 18"x32"

● **Schleeter, Howard**

(Albuquerque)

82. "The Bird Watcher"
Oil on panel 30"x40"

Schmidt, Albert H. (Santa Fe)

83. "Spring"
Pastel 15½"x22½"

★● **Schooley, Elmer** (Las Vegas)

84. "Fences"
Oil on canvas 20"x40"



CHRISTINA KERCHEVILLE "Pi" (53)

RECOMMENDED FOR PURCHASE

Seis, Dolly (Albuquerque)

85. "Spring Comes to 1st Street"
Casein Tempera with Oil
Glaze 18"x24"

Shoosmith, Mark (Alamogordo)

86. "Lily Lady"
Ceramic Sculpture 15½" high

● **Shonnard, Eugenie F.**

(Santa Fe)

87. "Garden Piece"
Keenstone Sculpture 3' high

● **Shuster, Will** (Santa Fe)

88. "Tanker Loading"
Casein Tempera on panel
20"x24"

★● **Sims, Agnes C.** (Santa Fe)

89. "Magic Animal"
Oil on canvas 38"x48"

★ **Skolle, John** (Santa Fe)

90. "Moorish City"
Oil on panel 17"x22"

Smith, Sam (Albuquerque)

91. "Mountain Landscape"
Oil on canvas 24"x30"

Stein, J. W. (Las Vegas)

92. "Bird on Stone"
Sculpture 16" high

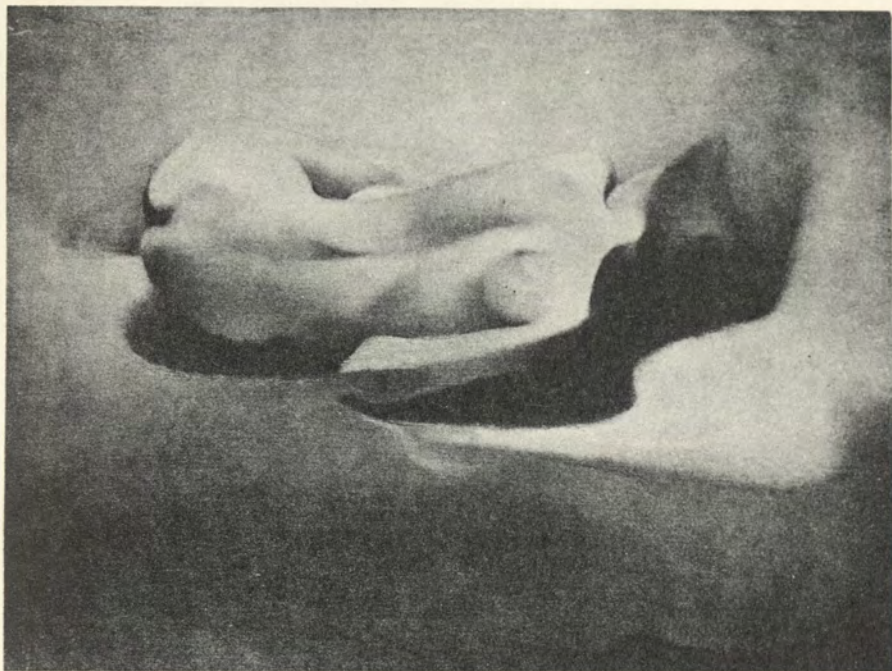
★ **Stroh, Earl** (Taos)

93. "The Sleeper"
Oil on panel 20"x27"

Strome, Richard K.

(Albuquerque)

94. "Winter"
Oil on canvas 22"x26"



EARL STROH "The Sleeper" (93)

RECOMMENDED FOR PURCHASE

● **Tait, Agnes** (Santa Fe)

95. "The Bridge"
Oil on panel 19"x40"

Tamotzu, Chuzo (Santa Fe)

96. "Heaven and Earth"
Oil on panel 36"x47"

● **Tatschl, John** (Albuquerque)

97. "Urchin"
Plaster Sculpture 13" high

Tedford, Elsie M. (Santa Fe)

98. "The Garden"
Oil on panel 15"x23"

Titzl, Richard (Albuquerque)

99. "Church at San Antonio"
Oil and Wax on canvas
26" x42"

Velarde, Pablita (Albuquerque)

100. "The Song of the Corn
Dance"
Water Color 15 $\frac{1}{2}$ "x20"

★ **Warder, William** (Albuquerque)

101. "Sandia"
Oil on canvas 19"x47"

★ ● **Weiss, Dorothea P.** (Las Cruces)

102. "La Posada"
Wax and Egg Tempera on
panel 32"x35"

West, Harold E. (Santa Fe)

103. "Cowboy with Pat Hand"
Oil on canvas 24"x30"

Wester, A. V. (Albuquerque)

104. "Stanley, New Mexico"
Oil on panel 20"x30"

Whiteman, James Ridgley

(Clovis)

105. "Humility"
Obsidian Sculpture 10" high



MIRIAM STORY HURFORD "Landscape" (48)

RECOMMENDED FOR PURCHASE

Wood, Anita B. (Santa Fe)

106. "Winter"
Casein Tempera 22"x27"

Wood, Bernadine (Taos)

107. "Boy on Horseback"
Oil on panel 16"x26"

Wormser, Judy (Santa Fe)

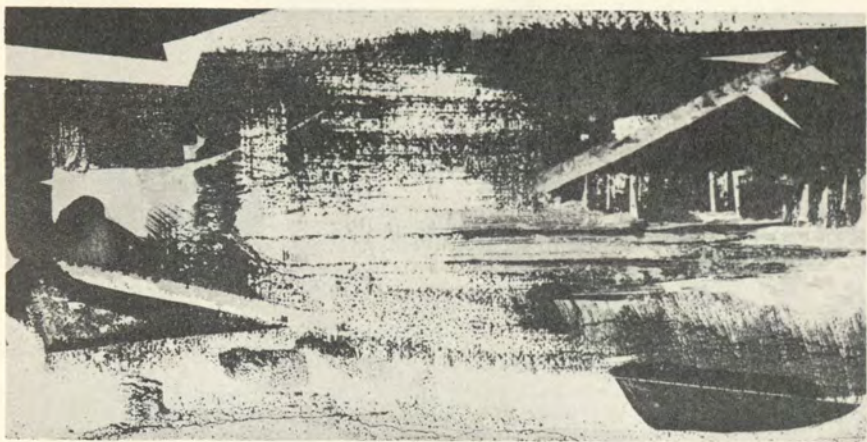
108. "Prayer for Peace"
Oil on panel 17"x32"

Wyeth, Henriette (San Patricio)

109. "Carol at Sixteen"
Oil on canvas 22"x24"

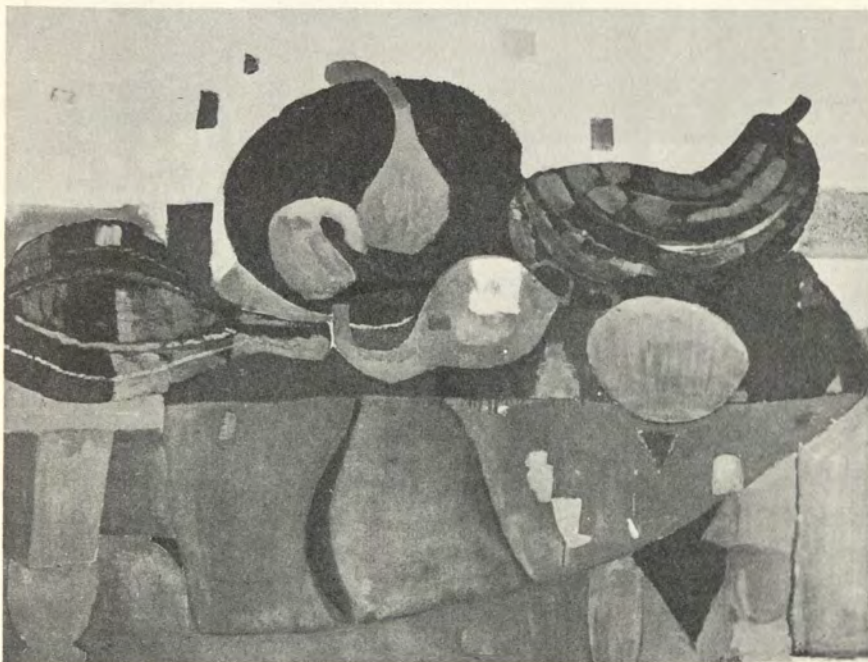
Yordy, D. Byrd (Española)

110. "Playhouse"
Oil on canvas 27"x35"



JOHN MCKINNEY "The Bird" (66)

RECOMMENDED FOR PURCHASE



BEATRICE MANDELMAN "Squash" (62)

RECOMMENDED FOR PURCHASE

Geographical Index

Alamogordo

Mark Shoesmith (86)

Albuquerque

Eugene Alesch (1)
Frederick Black (11)
Elizabeth C. Church (17)
Beth Danfelter (21)
Ralph Douglass (25)
Jean Ellett (30)
Jack Garver (38)
Raymond Jonson (51)
Christina Kercheville (53)
Harry Leighton (57)
Onetia Jean Leonard (58)
Rose Mary Mack (61)
Mimi Murphey (71)
Katharine Van Meter Sadock (79)
Howard Schleeter (82)
Dolly Seis (85)
Sam Smith (91)
Richard K. Strome (95)
John Tatschl (98)
Richard Titzl (100)
Pablita Velarde (101)
William Warder (102)
A. V. Wester (105)

Carlsbad

Doris Clippinger (18)
Roderick Mead (67)

Chupadero

Gert Berliner (9)

Clovis

James Ridgley Whiteman (106)

Dexter

Oscar Greene (42)

Española

D. Byrd Yordy (110)

Gallup

Walter E. Jacobson (50)

Las Cruces

Kenneth Barrick (6)
Elaine Flint (35)
Paul W. Mannen (63)
State College
Dorothea P. Weiss (103)
Mesilla Park

Las Vegas

Gussie Du Jardin (27)
Montezuma
Elmer Schooley (84)
Montezuma
J. W. Stein (93)

Los Alamos

Edith B. King (54)

Sandoval

Bertha Louise Rublee (77)

San Patricio

Peter Hurd (47)
Henriette Wyeth (109)

Santa Fe

Barry Atwater (2)
Jozef Bakos (3)
Teresa Bakos (4)
Cyrus LeRoy Baldrige (5)
Gustave Bauman (7)
Howard Bopst (14)
Brother James, F.S.C. (16)
Randall Davey (23)
Clare Dieman (24)
Tom Dryce (26)
Delores Durnell (28)
Fremont Ellis (31)
Vivian Sloan Fiske (32)
Opal Fitzpatrick (33)
Charlotte Fowler (36)
Eleanor de Ghizé (40)
David R. Gonzales (41)
Veronica Helfensteller (44)

Odon Hullenkremer (46)
Miriam Story Hurford (48)
Anna E. Keener (52)
Bernique Longley (60)
John McKinney (66)
Dorothy Morang (68)
Kay Mott (69)
Lloyd Moylan (70)
Helmuth Naumer (72)
Marian B. Richards (74)
Eliseo Rodriguez (75)
Olive Rush (78)
Sahula-Dycke (80)
Katharine Schlater (81)
Albert H. Schmidt (83)
Eugenie F. Shonnard (87)
Will Shuster (88)
Agnes C. Sims (89)
John Skolle (90)
Agnes Tait (96)
Chuzo Tamotzu (97)
Elsie M. Tedford (99)
Harold E. West (104)
Anita B. Wood (107)
Judy Wormser (108)

Silver City

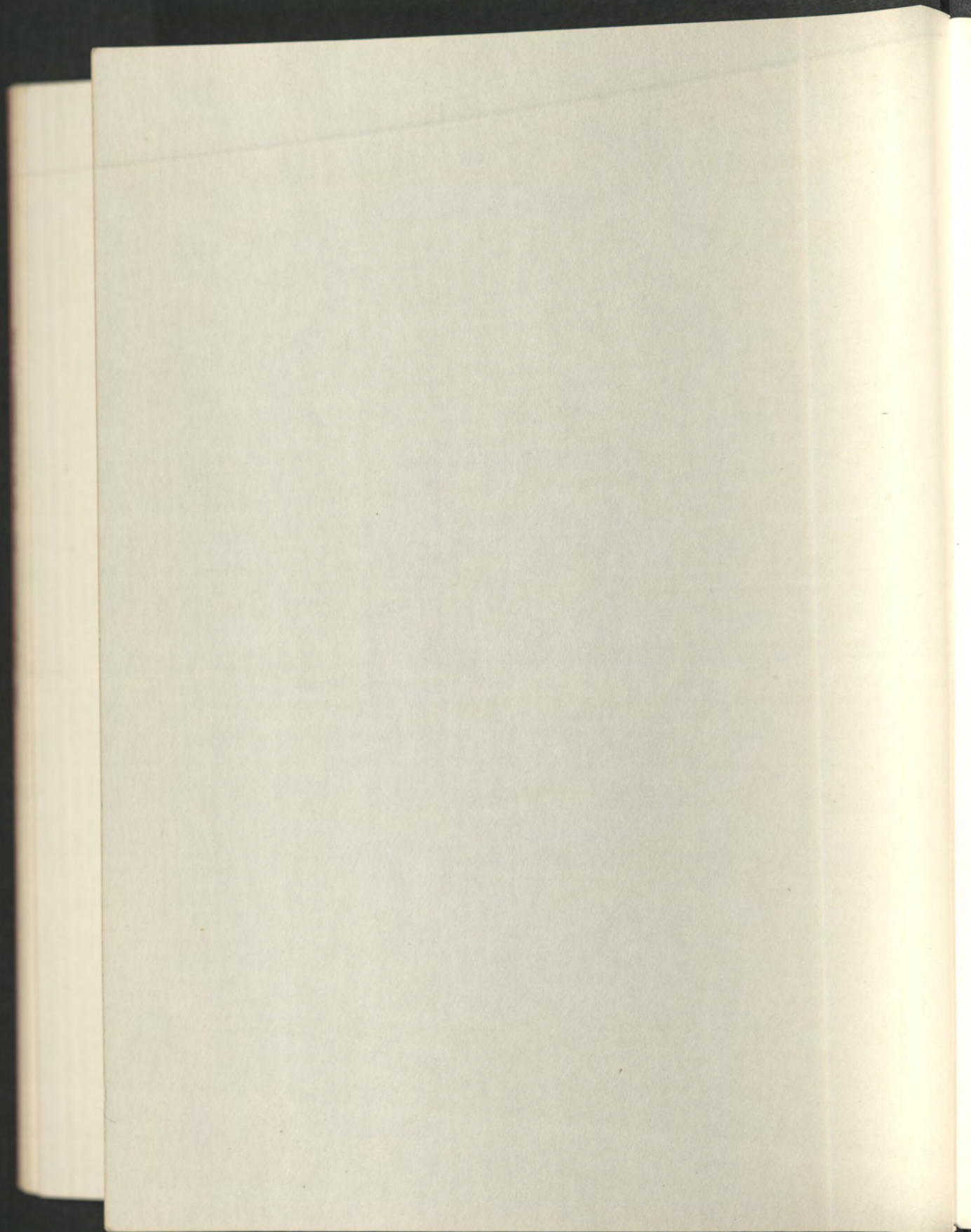
Dorothy McCray (65)

Taos

Tom Benrimo (8)
Emil Bisttram (10)
Ernest L. Blumenschein (12)
Helen G. Blumenschein (13)
D. E. Brett (15)
Howard Cook (19)
Edward Corbett (20)
Andrew Dasburg (22)
Ted Egri (29)
Joseph A. Fleck (34)
Louise Ganthiers (37)
Leon Gaspard (39)
Buff Haney (43)
Arthur Jacobson (49)
Mario Larrinaga (55)
Barbara Latham (56)
Ward Lockwood (59)
Beatrice Mandelman (62)
Ila McAfee (64)
Louis Ribak (73)
Alfred Rogoway (76)
Earl Stroh (94)
Bernadine Wood (108)

Tucumcari

Adelina Ortiz de Hill (45)



Museum of New Mexico Art Gallery

Board Members

Paul A. F. Walter, *Chairman*; Oliver Seth, *Secretary*; Wayne L. Mauzy, *Treasurer*; Horace M. Albright, Jennie M. Avery, Charles B. Barker, C. M. Botts, Kenneth M. Chapman, Herbert W. Clark, Charles H. Corlett, Byron Cummings, Mrs. Thomas E. Curtin, Henry Dendahl, Mrs. C. H. Dietrich, H. C. Gossard, John P. Harrington, Frederick W. Hodge, Peter Hurd, Eleanor Johnson, A. V. Kidder, Willard V. King, Rufus B. von KleinSmid, Robert E. McKee, James G. McNary, John Gaw Meem, Jesse L. Nusbaum, Tom L. Popejoy, W. W. Postlethwaite, Spencer L. Rogers, Eva Springer, Huston Thompson, Tsianina, Theodore Van Soelen, Cady Wells, Amelia E. White, Parker Wilson.

BOAZ LONG, *Vice Chairman and Director, School of American Research.*

Regents

Governor Edwin L. Mechem, *ex-officio*; Daniel T. Kelly, *President*; Paul A. F. Walter, *Treasurer*; Fray Angelico Chavez, Jennie M. Avery, Henry Dendahl.

The Art Gallery

Built in 1917 to foster the fine arts in New Mexico. Devoted to the development and maintenance of a permanent collection of New Mexico art, past and contemporary, and to the promotion of interest and appreciation in the arts, including painting, sculpture, architecture, music, dance, drama and poetry.

Art Advisory Committee

Ex-Officio Members: Peter Hurd, John Gaw Meem, Theodore Van Soelen, Cady Wells.

Elective Members: Ernest L. Blumenschein, Howard Cook, Frederick O'Hara, Elmer Schooley, Robert Walters.

Art Gallery Staff

Reginald Fisher, *Director of Fine Arts*
Dorothy Morang, *Secretary of Fine Arts in Charge of Traveling Exhibitions*
Hester Jones, *Curator of Contemporary New Mexico Art*
Alice Sharp, *Registrar*
Apolonio Rodriguez, *Custodian of Art*
Dorothy Walter, *Gallery Assistant*
Barbara Phillips, *Summer Gallery Assistant*
Vicente Padilla, *Gardener and Janitor*

Spanish Colonial Arts

E. Boyd, *Curator*

Honorary Associates

Dr. Hans Lange, *Director, Albuquerque Civic Symphony Orchestra and Santa Fe Sinfonietta and Choral Society*

Ruth S. Wilson, *Director of the Chorus, Santa Fe Sinfonietta and Choral Society*

Martha Ann Walker, *Serigrapher and Painter, Spanish Colonial Arts*