

originals

2005

A JURIED AND INVITATIONAL EXHIBITION OF NEW MEXICO WOMEN ARTISTS

Foreword

originals
2005

A juried and invitational
exhibition of New Mexico
women artists

Organized and sponsored by
the New Mexico Committee
of the National Museum of
Women in the Arts

September 23, 2005 through
February 5, 2006

Hosted by the Museum of
Fine Arts, Santa Fe

Foreword

We are proud to present *Originals 2005*, the selected works of 71 women artists from the state of New Mexico. This juried event is the fourth exhibition sponsored by the New Mexico Committee for Women in the Arts on behalf of the National Museum of Women in the Arts located in Washington, D.C.

Three distinguished jurors—Christine Knop Kallenberger, Director of Exhibitions and Collections at the Philbrook Museum of Art in Tulsa, Oklahoma; Diana Pardue, Curator from the Heard Museum in Phoenix, Arizona; and Stacie Widdifield, Professor of Art History at the University of Arizona—met in Santa Fe in late May to select the 71 artists from 648 entrants in a blind competition.

In addition, *Originals 2005* chose three honored artists: Grace Medicine Flower, potter from Santa Clara Pueblo; Lydia Garcia, *santera* from Taos; and Jane Sauer, fiber artist from Santa Fe. This follows our six-year tradition of showcasing talented guest artists who are recognized for their extraordinary creativity in a wide range of styles.

We have been fortunate to work with Director Marsha Bol and Curator of Contemporary Art Laura Addison at the Museum of Fine Arts. Their invitation to exhibit *Originals 2005* at the museum for four months and their professional advice have been invaluable. From the call for entries to the opening of the exhibition on September 23, 2005, the project would not have been possible without their enthusiastic support.

On behalf of the New Mexico Committee for Women in the Arts, we welcome you to *Originals 2005* to view the exhibition, browse the catalogue and perhaps acquire a fine work from these talented contemporary New Mexico artists. We hope you enjoy the exhibition as much as we have enjoyed the experience of bringing it to you. If you wish to contact us, call our Santa Fe number, (505) 986-9695, or email us at nmwomeninthearts@aol.com.

Sincerely,

Patrice Emrie

Chairperson, New Mexico Committee for Women in the Arts

Jane Buchsbaum and Helene Singer

Co-chairs of Originals 2005

Those who support us

The New Mexico Committee for Women in the Arts thanks the following people and businesses for their generous support of Originals 2005.

LEAD DONOR

The City of Santa Fe Arts Commission

LEAD PATRONS

Edith and Ernest Schwartz

LEAD SPONSOR

Tammy Garcia Pottery, Inc.

SPONSORS

Jane and Bill Buchsbaum

Pamela McCorduck and Joseph Traub

Sharon and Don McLaughlin

Helene Singer and Seymour Merrin

Eileen Wells (in honor of Jane Buchsbaum and Helene Singer)

SUPPORTERS

Ethel and Sam Ballen

JoAnn and Bob Balzer

John Berl

Margaret Moses Branch

Linda and John Comstock

Lucile Leigh Grieder

Mary Anne and Bruce Larsen

Maryann McCaffery

Nancy Neumann-Glasgow and John M. Glasgow

Santa Fe Weaving Gallery

John M. Scanlan

Colleen and John Sullivan

Carol and Bob Warren

CONTRIBUTORS

Janet Amtmann

Anonymous (2)

Gail Bass and Alan L. Pearlman

Wendi Beauford

Susan and Lee Berk

Elizabeth Carp

Pat Clifford

Marcia and Larry Cohen

Kathleen and Tom Decker

Patrice and Dennis Emrie

Linda Johnson

Helen Kornblum

Virginia and Marice Lierz

Kristin Lora and Steve Buck

Eleanor Macnish and Tom Moore

Shirley McNally

Adrienne and David Mielke

Edwina and Charles Milner

Doris Meyer and Richard Hertz

Beej Nierengarten-Smith and James B. Smith M.D.

Barbara-rose Okun

Jeanne Pschorr

Victoria Rabinowe

Jane and Don Sauer

Ruth and Sidney Schultz

Noel Schuurman

Joie Singer

Carol Sky and Robert L. Everett

Enid Tidwell

Shelby Tisdale

Victoria and T. Mark Varley

Joan and Cliff Vernick

L. Viamonte

Susanne Visor

Margaret Wright

This project was partially funded by the City of Santa Fe Arts Commission and the 1% Lodgers' Tax.

Introduction

In 1971, Linda Nochlin penned a well-known essay that posed the question, Why have there been no great women artists? The answer, she argued, was not that women artists could not be great but that the socioeconomic conditions of the past prevented them from being trained to practice the profession; hence their omission from the annals of art history. In the years following Nochlin's treatise, Lucy Lippard (one of New Mexico's own great women art critics) extensively explored the many issues surrounding feminist art in her book *From the Center: Feminist Essays on Women's Art* (1976), Judy Chicago (one of New Mexico's own great women artists) brought women to the table, literally, in her famous *Dinner Party* (1979), and, beginning in 1985, the Guerrilla Girls challenged the museum world to address the discrepancies.

Today women artists experience neither the same form nor the same degree of inequity in the art world: they have a place at the table and a strong voice in the institutions of art. The Museum of Fine Arts has an established history of exhibiting women artists, particularly in recent history—not because they are women artists but because they are great artists. An exhibition such as *Originals 2005*, therefore, is less a gesture of art activism or political protest than it is a celebration of women's creativity.

We invite you to join us to celebrate *Originals 2005* and to explore the rich creative output of the 74 artists in this exhibition. On behalf of the museum, I extend warm gratitude to the New Mexico Committee of the National Museum of Women in the Arts, especially Jane Buchsbaum, Helene Singer, Lucile Leigh Grieder, Colleen Sullivan, Patrice Emrie and Susan McGarry, for organizing the exhibition and for their passionate commitment to the women artists of this state.

Laura Addison

Curator of Contemporary Art
Museum of Fine Arts, Santa Fe

The Museum of Fine Arts gratefully acknowledges Doug Ring and Cindy Miscikowski for their support of the Museum's contemporary art program.

Jurors' Statements

Christine Knop Kallenberger

For the past 14 years, Christine has been Director of Exhibitions and Collections at the Philbrook Museum of Art in Tulsa.

New Mexico has long been a magnet for artists, and the number and variety of entries attested to the continuing vitality of this arts community. Judging quality through slides rather than direct experience always poses challenges. However, our impulses as jurors were almost always in accord, and effort was made to evaluate each image on its own terms. The resulting exhibition embraces a broad range of media and styles, and is one which audiences should find both stimulating and entertaining. The energy and professionalism of the organizing committee was also impressive. Through their commitment to diversity and inclusiveness, they were able to more than double the number of submissions this year, making the biennial a major showcase for New Mexico artists.

Diana F. Pardue

Diana is a curator at the Heard Museum in Phoenix.

It was an honor to serve as one of the jurors to select works by New Mexico women artists, and exciting to see the scope and range of artwork created. The challenge in reviewing the more than 1,900 images was to reduce that number to about 70 works for the exhibition. Judging a show from slides is difficult on several levels. A slide cannot completely convey the luminescent qualities of a painting or fully show the complexity of a three-dimensional form. An artwork photographed in poor lighting or an image that is out of focus diminishes the jurors' ability to adequately review that entry. The works of art chosen this year are diverse and unique, and are powerful examples of the creative individuality exhibited by New Mexico women artists.

Stacie Widdifield, Ph.D.

A professor of art history in the School of Art, University of Arizona in Tucson, Stacie's research focuses on late-18th through 20th-century Mexican art.

It was my great pleasure to participate in the selection of works for *Originals 2005*. To choose from among the many artworks a little more than 70 for the show was both a daunting and pleasurable task. The sheer range of subject matter, medium and scale demonstrated the collective vitality of women's art production in New Mexico. We hope that our final selection testifies to this vitality. The viewer should find works that require their engagement with small, finely worked objects and larger installations, with realist and abstract representations, and with local and international concerns. It is important that the viewer sees this variety and recognizes the value of this important exhibition and the energy, commitment and intelligence of the New Mexico Committee of the National Museum of Women in the Arts.

Invited Artist

New Mexico Women in the Arts is proud to honor these New Mexico artists, who were selected by our Board of Directors as representing the highest achievement in the visual arts.

Lydia Garcia

Lydia Garcia is a lifelong resident of Taos who works in the *santero* tradition of Hispano New Mexico. She learned her art of saintmaking from her father, a carpenter and adobe maker, and continues this family tradition in the adobe workshop built by her grandfather, blacksmith Antonio Vigil. As a child, Lydia would go to the studios of Taos artists Andrew Dasburg and Ward Lockwood to quietly observe as they painted. She would then run home to practice what she had learned on the back of an oil table cloth. Using whatever materials are available to her, such as recycled wood, tin cans, old furniture and objects given to her by neighbors and friends, Lydia integrates new and unusual materials into the traditional art of the *santero*, always infusing her creations with profound religious beliefs and a distinctive naïve style.



Reredo, 2005
Wood, acrylic
34 x 34.5 inches
Courtesy of the artist

Invited Artist

Grace Medicine Flower (Santa Clara Pueblo)

A member of the well-known Tafoya family of potters, Grace Medicine Flower combines a contemporary vision with traditional pottery-making and firing techniques. With prayers and thanks offered to the Clay Lady, she unearths the clay from Santa Clara lands and prepares it for hand-coiling forms that are then hand-polished with a polishing stone that was handed down to her by her mother, Agapita "Yellow Flower" Tafoya. Grace Medicine Flower is known for introducing the sgraffito style, a delicate etching of imagery onto the clay, which creates a dynamic surface characterized by an interplay of matte and highly polished surfaces, intricate sgraffito and more broadly executed carving, and imagery that ranges from geometric to organic, such as hummingbirds, butterflies or flowers. Most recently, she has introduced a basket-coil motif to her often small-scale forms, demonstrating her continual desire to bring innovation to traditional Pueblo pottery.

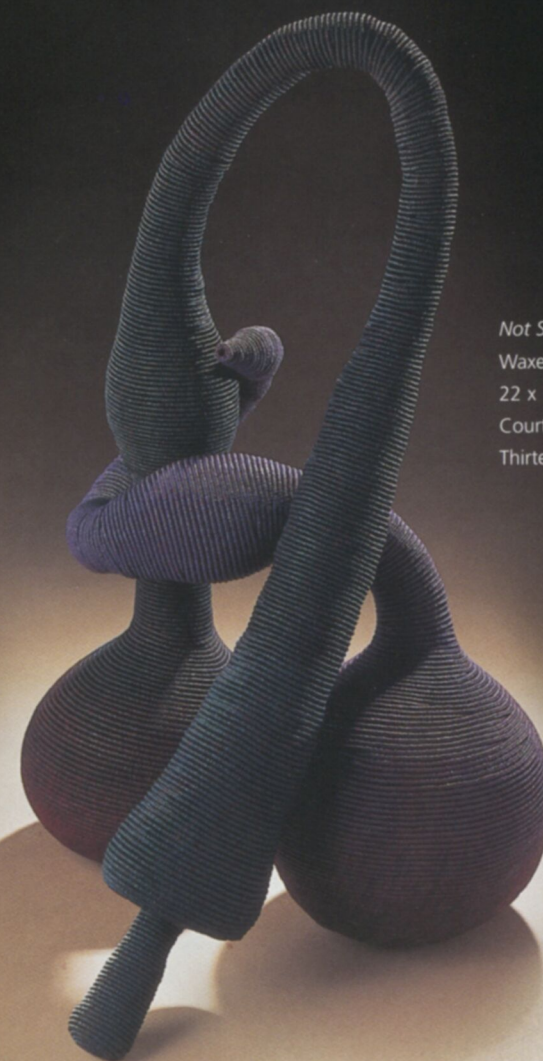
Various vessels, 2005
Native clay with native clay slips
Courtesy of King Galleries, Scottsdale



Invited Artist

Jane Sauer

Jane Sauer has been an innovator in the field of fiber art for more than three decades. Her knotted-linen fiber sculptures of organic shapes push the boundaries of conventional basketry. The sculptures usually involve an interaction between forms, allowing them to be suggestive of the human body and bringing to mind interpersonal relationships. The sculptural duos embrace, attract and repel, and contain each other. They are uncannily capable of expressing emotion, mood and affection. Originally from St. Louis, Jane moved to Santa Fe in the late 1990s, and her work began to reflect the palette and shapes of the landscape here. In addition to an active career as a studio artist, Jane has also been a curator, teacher, lecturer and gallerist.



Not So Independent, 2001
Waxed linen and pigment
22 x 14 x 13 inches
Courtesy of Jane Sauer
Thirteen Moons Gallery, Santa Fe

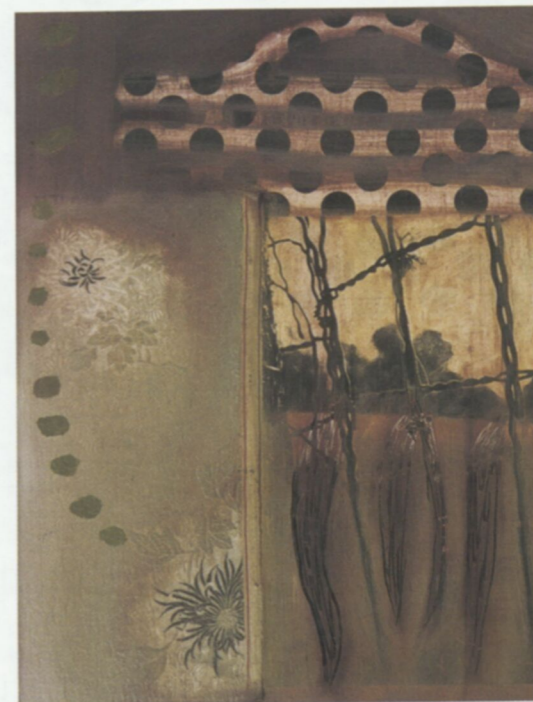
▶ **Victoria Adams** (Cheyenne Arapaho)
Last Bear Receives an Iniskim, 2005

▶ **Mical Aloni**
Tara, 2005



▶ **Maude Andrade**
Garden Series, 2004

▶ **Carol Anthony**
Postcard: Wish You Were Here—
Trio, 2004–05



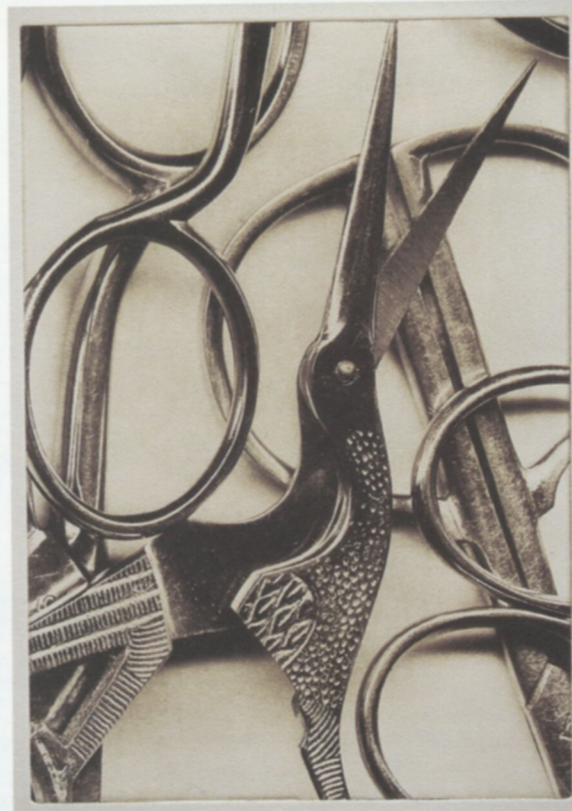


Linda Apodaca

Navajo Step-Pattern Choker, 2003

Dzinat'situwit'sa Wanda Aragon (Acoma Pueblo)

Acoma Waterjar, 2004

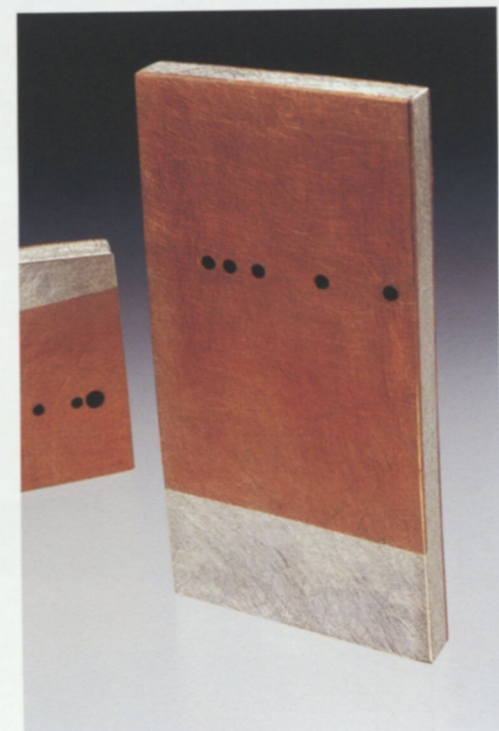


Laurie Archer

Scissors, 2005

Emanuela Aureli

Bimetal 1 + 2 Brooches, 2003-04

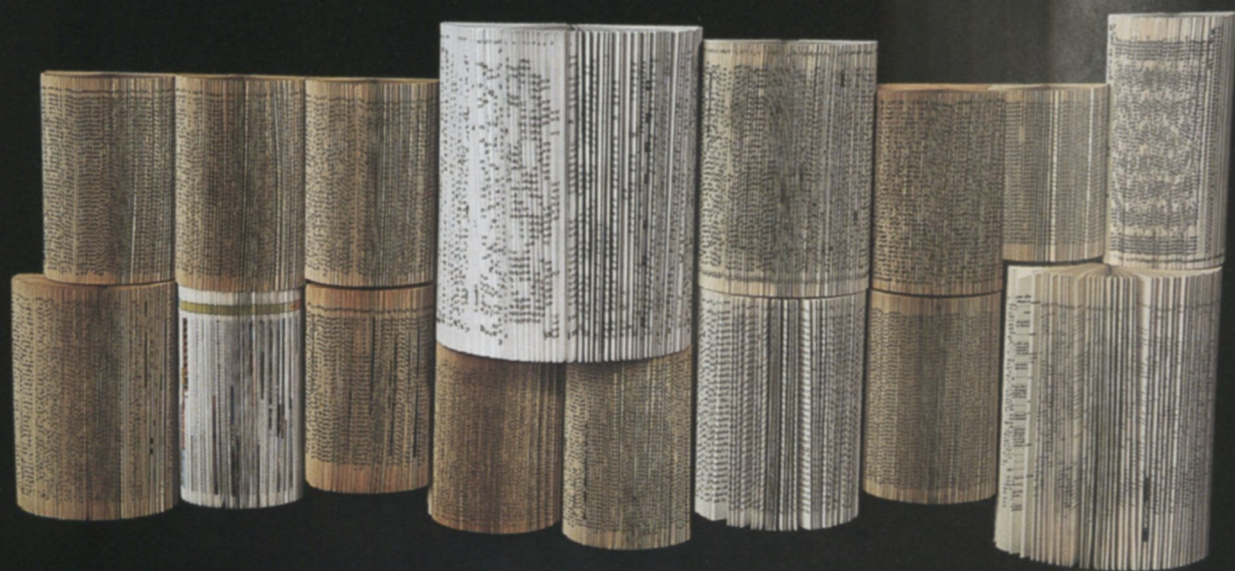


▶ **Karen Benjamin**

Mountain Rhythm, 2004

▶ **Mary Bennett**

A Little Light Reading Redux, 2005
(detail of installation)



▶ **Autumn Borts** (Santa Clara Pueblo)

Dragonfly's Dream, 2003

▶ **N. T. Brown**

Horizon Series 1, 2005



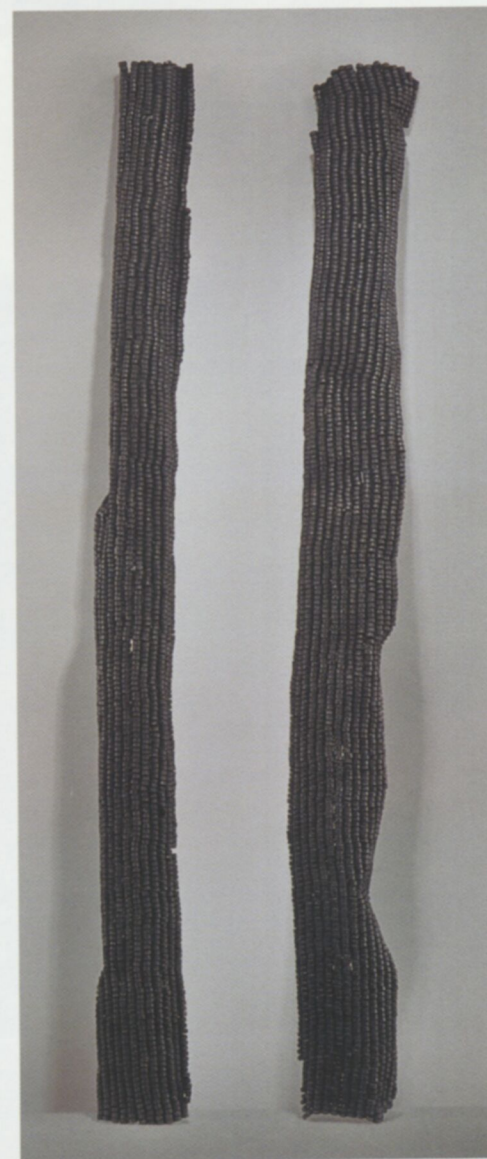


▶ **Elizabeth J. Buckley**
Portal, 2005

▶ **Carol Burns**
La Rèn Nan Bwa (The Queen in the Woods [Haitian Creole]), 2005

▶ **Barbara Campbell**
Burst Seed Pod, Large Series, 2005

▶ **Paula Castillo**
dos hermanas/dos árboles, 2005



▶ **Cristina Clarimón-Alinder**

She Never Cares To Rest, 2005

▶ **Donna Loraine Contractor**

Sierpinski Band, 2004



▶ **Anne Cooper**

Frumentum iii-ix, 2005

▶ **Rachel Darnell**

Labyrinth, 2004





Kawana L. Edwards

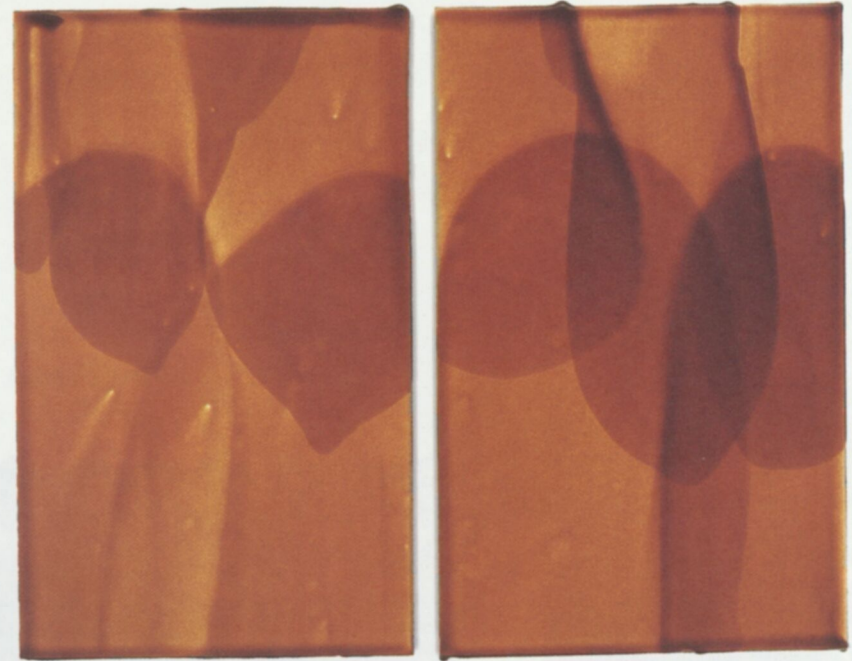
Guppies, Tramps & Thieves, 2004

Arjuna Estul

Dance with the One You Came With, 2004



2004



Lisa Freeman

Diptych, 2005

Elizabeth Fritzsche

Good Intentions, 2005





Isabella Gonzales
Known Quantity, 2005

Judi Goolsby
The Modern Maya: San Juan Chamula, 2005



Claire L. Haye
The Woman's Year, 2004

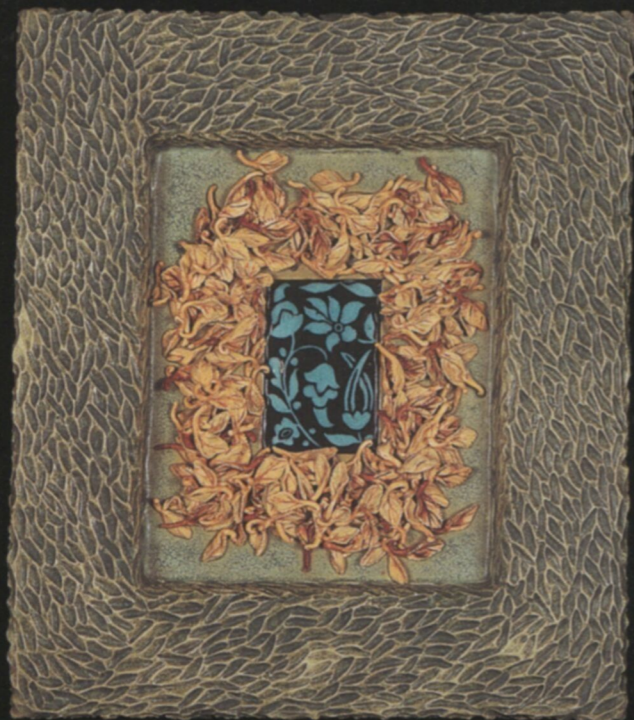
Teresa Henke
Kwan Yin, 2005





▲ **Linda Hunsaker**
Our Little House: Crossover, 2004

▲ **Amanda Jaffe**
Yellow Leaves VII, 2004



▲ **Jan Janas**
Lamentation, 2005

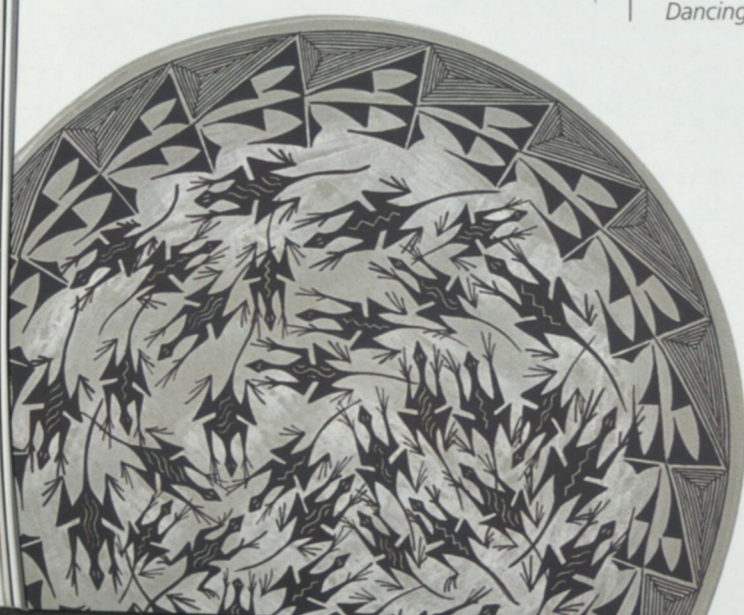


▲ **McCreery L. Jordan**
Only Child, 2005



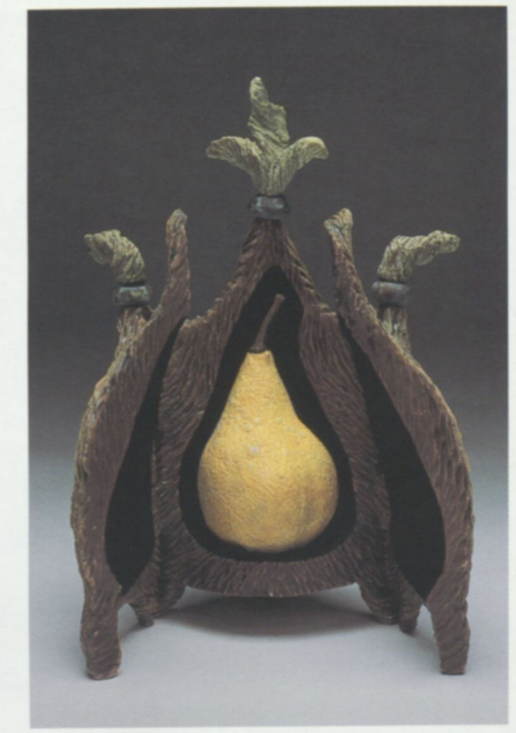
▲ | **Jennifer Joseph**
Series 5000, 2005

▼ | **Marietta P. Juanico** (Acoma Pueblo)
Dancing Lizards, 2005



▶ | **Suzanne Kane**
Oratory, 2004

▶ | **Martha Kennedy**
Under Aqua Sky, 2005





▶ | **Alice F. Kessler**
Gorge, 2003



▶ | **Mary Anne Lewis**
Ledger Series, 2005



▶ | **Marta Light**
City, 2005

▶ | **Lucy Lyon**
9 a.m., 2003





▲ | **C. J. MacLeod**

Thank You Janet Fish, 2004

▼ | **Susan Margin**

Family, 2005



▲ | **Lenise L. Martinez**

Lilies (Cross), 2005

▲ | **Ada Medina**

csk, 2003





▲ | **Micki Muhlbauer**
Ole Cactus Paw, 2005

▼ | **Marcia Muth**
The Rally, 2004



▲ | **Teresa Neptune**
Bathers, Belize, 2005

▼ | **Obregón**
Full Moon, 2004





▶ **Deborah Rael-Buckley**

Revelation, 2005

▶ **Charlyn (Charlene L. Reano) (Santo Domingo Pueblo)**

Mokume Gane Bracelet, 2005



▶ **Cheri Reckers**

Yucca—Summer, 2005

▶ **Rosalyn Roembke**

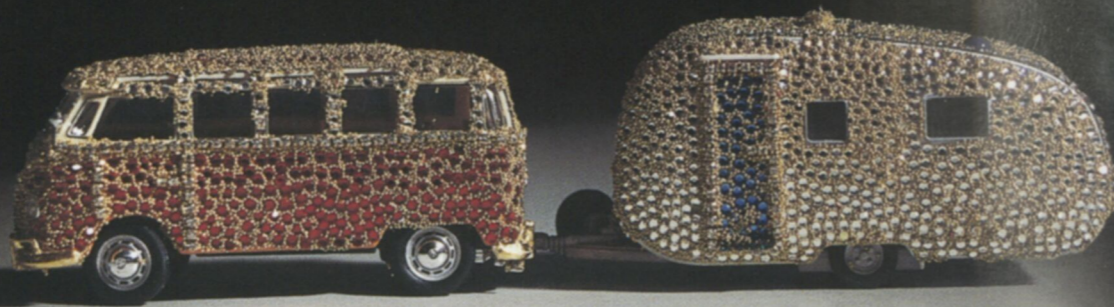
Pears, 2004





▲ | **Myrna Ruskin**
Do You Need a Pick-Up?, 2005

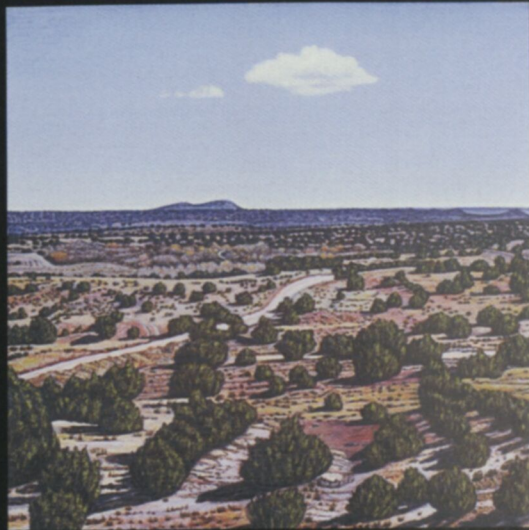
▼ | **Carol Sarkisian**
Deluxe Samba Pulling Bambi, 2005



▲ | **Sharon Schwartzmann**
Mimic, 2005

▲ | **Ellen Scott**
Traveling, 2005





▶ **Christine Seubert-Bourque**
Camino Quernica, 2005



▶ **Martha W. Shade**
Baraq, 2004



▶ **Josephine Sittenfeld**
Kate, 2003

▶ **Lisa Smith**
Red Shrine Woman, 2004



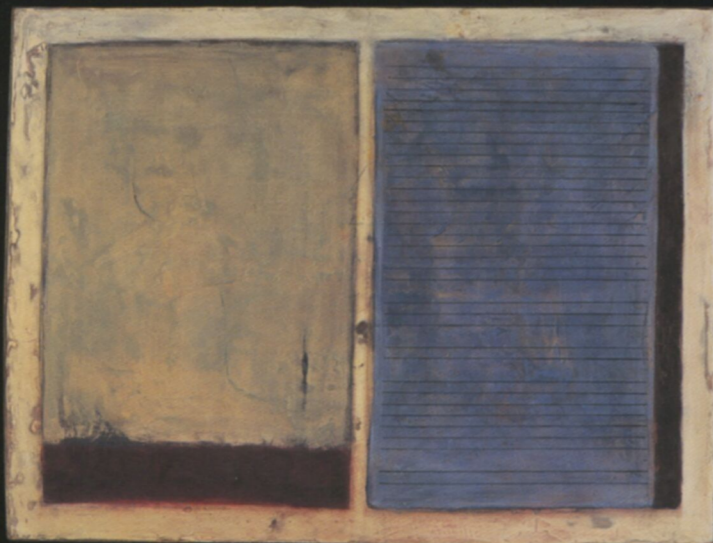


▲ **Monika Steinhoff**

Four Horsemen of the Apocalypse, 2003

▼ **Maryellen Stewart**

Mirage, 2004



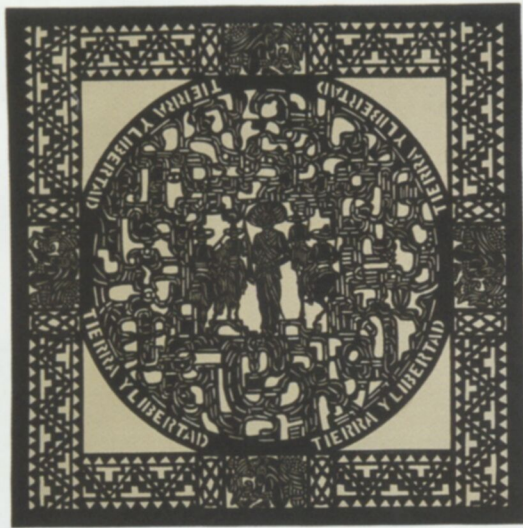
▲ **Mary Buck Thompson**

Potentate, 2000-05

▲ **Nina Tichava**

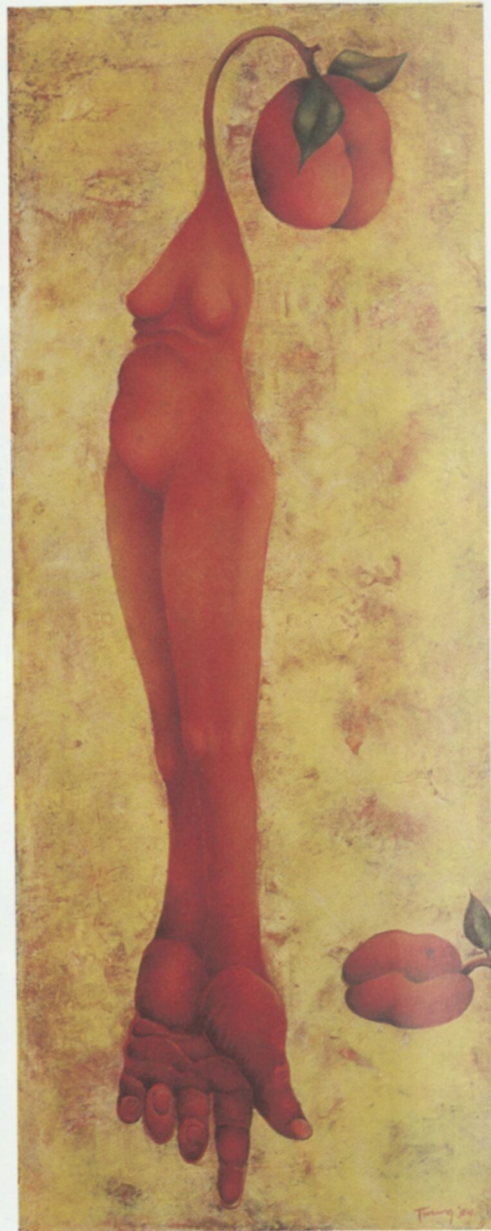
Hoi An, 2004





▲ | **Catalina Delgado Trunk**
Sendero Zapatista, 2005

▶ | **Shawn Turung**
Ripe, 2004



▲ | **Donna Van Leer**
Self-Portrait: Exercising My Demons, 2004



▶ | **Michelle Vest**
Still Falls #2, 2005



▶ **Betsy Williams**

Solid Lines—The Pair, 2005



▶ **Jennifer Wynne**

Pond 3, 2004



▶ **Bhakti Ziek**

Crabapple, 2004

Exhibition Checklist

Dimensions indicated are height x width (x depth).

Victoria Adams (Cheyenne Arapaho)
Last Bear Receives an Iniskim, 2005
18-karat gold, sterling silver, Tibetan and American turquoise, fossilized palmwood, ammonite fossil, walrus tooth, sapphires
8 x 2.5 inches
Courtesy of the artist

Mical Aloni
Tara, 2005
Embroidery
3.5 x 6 inches
Courtesy of the artist

Maude Andrade
Garden Series, 2004
Oil on paper, collage, fabric
12.5 x 10 inches
Courtesy of the artist

Carol Anthony
Postcard: Wish You Were Here—Trio, 2004–05
Oil crayon on gessoed panel
11.75 x 19.25 inches
Courtesy of the Gerald Peters Gallery, Santa Fe

Linda Apodaca
Navajo Step-Pattern Choker, 2003
Sterling silver, Czech cut-glass beads
1.25 x 1.25 inches (approx. 21 inches length)
Courtesy of the artist

Dzinat'situwit'sa Wanda Aragon (Acoma Pueblo)
Acoma Waterjar, 2004
Traditionally handmade Acoma pottery
8 inches x 10 inches diameter
Courtesy of the artist

Laurie Archer
Scissors, 2005
Solarplate etching
10 x 7 inches
Courtesy of the artist

Laurie Archer
Marker Peel, 2005
Solarplate etching
10 x 7 inches
Courtesy of the artist

Emanuela Aureli
Bimetal 1 + 2 Brooches, 2003–04
Sterling silver, copper
1 1/8 x 3/8 x 2 1/8 inches
Courtesy of the artist

Karen Benjamin
Mountain Rhythm, 2004
Hand-dyed, handwoven wool tapestry on cotton warp
40 x 30 inches
Courtesy of Jane Sauer Thirteen Moons Gallery, Santa Fe

Mary Bennett
A Little Light Reading Redux, 2005
Altered vintage books
84 x 84 x 5 inches
(each section 18 x 40 x 5 inches)
Courtesy of Turner Carroll Gallery, Santa Fe

Autumn Borts (Santa Clara Pueblo)
Dragonfly's Dream, 2003
Ceramic
3.75 x 5 inches
Courtesy of the artist

N. T. Brown
Horizon Series 1, 2005
Acrylic on handmade paper
10 x 10 inches
Courtesy of the artist

Elizabeth J. Buckley
Portal, 2005
Handwoven Aubusson-style tapestry
48 x 28 inches
Courtesy of the artist

Carol Burns
La Rèn Nan Bwa (The Queen in the Woods [Haitian Creole]), 2005
Found objects, sequins, beads
61 x 31 x 1.5 inches
Courtesy of the artist

Barbara Campbell
Burst Seed Pod, Large Series, 2005
Slab-constructed stoneware
25 x 25 x 25 inches
Courtesy of Weyrich Gallery, Albuquerque

Paula Castillo
dos hermanas/dos árboles, 2005
Individually punched and welded steel
84 x 48 x 9 inches
Courtesy of the artist

Cristina Clarimón-Alinder
She Never Cares To Rest, 2005
Collage on board
12 x 8 inches
Courtesy of the artist

Donna Loraine Contractor
Sierpinski Band, 2004
Handwoven wool tapestry
38 x 46 inches
Courtesy of the artist

Anne Cooper
Frustrum iii-ix, 2005
Wood, glass, test tubes, dried plants
8 x 35 x 3 inches
Courtesy of the artist

Rachel Darnell
Labyrinth, 2004
Oil and 24-karat gold leaf on woven canvas
34 x 34 x 3 inches
Courtesy of Darnell Fine Art, Santa Fe

Kawana L. Edwards
Guppies, Tramps & Thieves, 2004
Natural and found objects: dried fish, flowers, burned coal
3.25 x 4.625 x 2 inches
Courtesy of the artist

Arjuna Estul
Dance with the One You Came With, 2004
Colored pencil on paper
12 x 5 inches
Courtesy of the artist

Lisa Freeman
Diptych, 2005
Wax on board
13 x 16 inches
Courtesy of tadu contemporary uptown, Santa Fe

Elizabeth Fritzsche
Good Intentions, 2005
Cast iron, casein
10 x 21 x 5.5 inches
Courtesy of the artist

Lydia Garcia
Reredo, 2005
Wood, acrylic
34 x 34.5 inches
Courtesy of the artist

Isabella Gonzales
Known Quantity, 2005
Porcelain, wire, lead shot
7 feet x 5 inches x 2.5 inches
Courtesy of the artist

Judi Goolsby
The Modern Maya: San Juan Chamula, 2005
Hand-dyed, painted, beaded, quilted fabric
48 x 36 x 2 inches
Courtesy of the artist

Claire L. Haye
The Woman's Year, 2004
Bronze
4.5 x 23.25 x 19.25 inches
Courtesy of Claireworks Gallery, Arroyo Seco

Teresa Henke
Kwan Yin, 2005
Free-form peyote beadwork
10.25 x 2.5 inches (16 inches length)
Courtesy of the artist

Linda Hunsaker
Our Little House: Crossover, 2004
Linocut
5.5 x 8.5 inches
Courtesy of the artist

Amanda Jaffe
Yellow Leaves VII, 2004
Ceramic
11 x 9 x 2.5 inches
Courtesy of the artist

Jan Janas
Lamentation, 2005
Carbon pencil on paper
24 x 18 inches
Courtesy of the artist

McCreery L. Jordan
Only Child, 2005
Acrylic, collage elements on wood
16 x 12 inches
Courtesy of Meyer-Munson Gallery, Santa Fe

Jennifer Joseph
Series 5000, 2005
Acupuncture needles, wire
dimensions variable
Courtesy of EVO Gallery, Santa Fe

Marietta P. Juanico (Acoma Pueblo)
Dancing Lizards, 2005
Traditionally handmade Acoma pottery
12 inches diameter x 0.75 inches
Courtesy of the artist

Suzanne Kane
Oratory, 2004
Ceramic
11 x 11 x 5 inches
Courtesy of the artist and Patina Gallery, Santa Fe

Martha Kennedy
Under Aqua Sky, 2005
Oil pastel on paper mounted on board
24 x 28 inches
Courtesy of Artistas de Santa Fe

Alice F. Kessler
Gorge, 2003
Acrylic on paper
19.5 x 14.75 inches
Courtesy of the artist

Mary Anne Lewis
Ledger Series, 2005
Acrylic, vintage Japanese handmade paper, knotted netting on canvas
20 x 20 x 1.75 inches
Courtesy of Meyer-Munson Gallery, Santa Fe

Marta Light
City, 2005
Collage with hand-designed paper, pencil and gesso
14 x 21 inches
Courtesy of the artist

Lucy Lyon
9 a.m., 2003
Cast glass, fabricated steel
18 x 20.5 x 17.25 inches
Courtesy of LewAllen Contemporary, Santa Fe

C. J. MacLeod
Thank You Janet Fish, 2004
Oil on canvas
36 x 48 inches
Courtesy of the artist

Susan Margin
Family, 2005
Ceramic
13.5 x 17 x 21 inches
Courtesy of the artist and Meyer-Munson Gallery, Santa Fe

Lenise L. Martinez
Lilies (Cross), 2005
Straw appliqué
10 x 6 x 1 inches
Courtesy of the artist

Grace Medicine Flower (Santa Clara Pueblo)
The Basket Maiden, 2005
Native clay with native clay slips
5.25 inches x 4.5 inches diameter
Courtesy of the artist

Ada Medina
csk, 2003
Paper, leather, cornstarch, red earth
36 x 5.125 x 5 inches
Courtesy of the artist

Micki Muhlbauer
Ole Cactus Paw, 2005
Oil on panel
19.25 x 31.5 x 1.75 inches
Courtesy of the artist

Marcia Muth
The Rally, 2004
Acrylic on canvas
24 x 36 x 1.5 inches
Courtesy of the artist

Teresa Neptune
Bathers, Belize, 2005
Ultrachrome print
12 x 18 inches
Courtesy of the artist

Obregón
Full Moon, 2004
Monotype
7.5 x 9.5 inches
Courtesy of the artist

Deborah Rael-Buckley
Revelation, 2005
Stoneware, glazes, oxide, epoxy
65 x 23 x 13 inches
Courtesy of Jane Sauer Thirteen Moons Gallery, Santa Fe

Charlyn (Charlene L. Reano) (Santo Domingo Pueblo)
Mokume Gane Bracelet, 2005
Sterling silver, copper
0.375 x .75 x 0.25 inch
Courtesy of the artist

Charlyn (Charlene L. Reano) (Santo Domingo Pueblo)
Inlaid Floral Necklace, 2005
Sterling silver, copper, nickel, 14-karat yellow gold, 22-karat yellow gold, 18-karat rose gold, shaku-do
1.5 x 1.5 x 0.75 inches (16 inches length)
Courtesy of the artist

Cheri Reckers

Yucca—Summer, 2005
Silk/rayon velvet, hand painted with fiber-reactive dyes, lined in silk crepe de chine
38 x 57 x 1 inches
Courtesy of the artist

Rosalyn Roembke

Pears, 2004
Oil on mounted canvas
9 x 13 inches
Courtesy of the artist

Myrna Ruskin

Do You Need a Pick-Up?, 2005
Collage
12 x 16 inches
Courtesy of the artist

Carol Sarkisian

Deluxe Samba Pulling Bambi, 2005
Collected object, rhinestones, gold leaf, silver leaf, glass beads
2 x 8.5 x 2 inches
Courtesy of the artist

Carol Sarkisian

Bride of Frankenstein, 2004
Collected object, rhinestones, gold leaf, silver leaf, glass beads
10 x 5 x 3.5 inches
Courtesy of the artist

Jane Sauer

Not So Independent, 2001
Waxed linen and pigment
22 x 14 x 13 inches
Courtesy of Jane Sauer Thirteen Moons Gallery, Santa Fe

Sharon Schwartzmann

Mimic, 2005
Oil on canvas with paper overlays
48 x 44 inches
Courtesy of the artist

Ellen Scott

Artisan, 2005
Cotton fabric, textile and embroidery thread
8 x 12 inches
Courtesy of the artist

Ellen Scott

Traveling, 2005
Cotton fabric, textile and embroidery thread
13 x 18 inches
Courtesy of the artist

Christine Seubert-Bourque

Camino Quernica, 2005
Acrylic on Masonite
5 1/16 x 5 1/16 inches
Courtesy of Eldridge McCarthy Gallery, Santa Fe

Martha W. Shade

Baraq, 2004
Paper pulp, glass beads, fabric, wood
28 x 8 x 19 inches
Courtesy of the artist

Josephine Sittenfeld

Kate, 2003
C-41 photograph
15 x 15 inches
Courtesy of the artist

Lisa Smith

Cat Stack, 2005
Ceramic, tempered wire
13 x 5 x 3 inches
Courtesy of Mariposa Gallery, Albuquerque

Lisa Smith

Red Shrine Woman, 2004
Ceramic, tempered wire
18.5 x 11 x 6 inches
Courtesy of Karen Melfi Collection, Santa Fe

Monika Steinhoff

Four Horsemen of the Apocalypse, 2003
Egg tempera
36 x 48 inches
Courtesy of the artist

Maryellen Stewart

Mirage, 2004
Mortar, oil paint on wood panel
23.75 x 32 x 2 inches
Courtesy of the artist

Mary Buck Thompson

Potentate, 2000-05
German silver, pearls
7.5 x 7.5 x 7.5 inches
Courtesy of the artist

Mary Buck Thompson

Violet Crown, 2005
Amethyst crystals, sterling silver
3 x 7 x 7 inches
Courtesy of the artist

Nina Tichava

Hoi An, 2004
Oil on canvas
82 x 48 x 3 inches
Courtesy of Tichava-Mills Fine Art, Truchas

Catalina Delgado Trunk

Sendero Zapatista, 2005
Cut paper over paper
29.25 x 29.25 inches
Courtesy of the artist

Shawn Turung

Ripe, 2004
Oil and encaustic on board
30 x 12 inches
Courtesy of the artist

Donna Van Leer

Self-Portrait: Exercising My Demons, 2004
Pastel
14 x 22 inches
Courtesy of the artist

Michelle Vest

Still Falls #2, 2005
Acrylic on canvas
60 x 36 x 2 inches
Courtesy of the artist

Betsy Williams

Solid Lines—The Pair, 2005
Ceramic
5 x 5 x 2 inches each
Courtesy of the artist

Jennifer Wynne

Pond 3, 2004
Oil on canvas
72 x 72 inches
Courtesy of the artist

Bhakti Ziek

Crabapple, 2004
Handwoven digital jacquard weaving
34 x 51 inches
Courtesy of the artist

Alice F. Kessler

Gorge, 2003
\$1,200

Mary Anne Lewis

Ledger Series, 2005
\$1,200

Marta Light

City, 2005
\$750

Lucy Lyon

9 a.m., 2003
\$9,500

C. J. MacLeod

Thank You Janet Fish, 2004
\$5,000

Susan Margin

Family, 2005
\$3,800

Lenise L. Martinez

Lilies (Cross), 2005
\$220

Grace Medicine Flower

(Santa Clara Pueblo)
The Basket Maiden, 2005
\$6,200

Ada Medina

csk, 2003
\$3,200

Micki Muhlbauer

Ole Cactus Paw, 2005
\$4,000

Marcia Muth

The Rally, 2004
\$1,750

Teresa Neptune

Bathers, Belize, 2005
\$500

Obregón

Full Moon, 2004
\$180

Deborah Rael-Buckley

Revelation, 2005
\$5,000

Charlyn (Charlene L. Reano)

(Santa Domingo Pueblo)
Mokume Gane Bracelet, 2005
\$720

Charlyn (Charlene L. Reano)

(Santa Domingo Pueblo)
Inlaid Floral Necklace, 2005
\$9,500

Cheri Reckers

Yucca—Summer, 2005
\$2,000

Rosalyn Roembke

Pears, 2004
\$1,200

Myrna Ruskin

Do You Need a Pick-Up?, 2005
\$1,950

Carol Sarkisian

Deluxe Samba Pulling Bambi, 2005
\$1,500

Carol Sarkisian

Bride of Frankenstein, 2004
\$1,500

Jane Sauer

Not So Independent, 2001
\$12,000

Sharon Schwartzmann

Mimic, 2005
\$4,750

Ellen Scott

Artisan, 2005
\$600

Ellen Scott

Traveling, 2005
\$900

Christine Seubert-Bourque

Camino Quernica, 2005
\$1,000

Martha W. Shade

Baraq, 2004
\$3,800

Josephine Sittenfeld

Kate, 2003
\$175

Lisa Smith

Cat Stack, 2005
\$875

Lisa Smith

Red Shrine Woman, 2004
\$1,950

Monika Steinhoff

Four Horsemen of the Apocalypse, 2003
\$12,000

Maryellen Stewart

Mirage, 2004
\$2,000

Mary Buck Thompson

Potentate, 2000-05
\$2,400

Mary Buck Thompson

Violet Crown, 2005
\$2,400

Nina Tichava

Hoi An, 2004
\$5,600

Catalina Delgado Trunk

Sendero Zapatista, 2005
\$1,350

Shawn Turung

Ripe, 2004
\$900

Donna Van Leer

Self-Portrait: Exercising My Demons, 2004
\$450

Michelle Vest

Still Falls #2, 2005
\$2,000

Betsy Williams

Solid Lines—The Pair, 2005
\$600 pair

Jennifer Wynne

Pond 3, 2004
\$10,000

Bhakti Ziek

Crabapple, 2004
\$6,000

35% of sales support the New Mexico
Committee for Women in the Arts' programs.

PRICE LIST

For inquiries or purchases, please contact Jane Buchsbaum (982-3133) or Helene Singer (989-8402) or email nmwomeninthearts@aol.com.

Victoria Adams (Cheyenne Arapaho)
Last Bear Receives an Iniskim, 2005
\$5,800

Mical Aloni
Tara, 2005
\$4,400

Maude Andrade
Garden Series, 2004
\$400

Carol Anthony
Postcard: Wish You Were Here—Trio,
2004–05
\$3,500

Linda Apodaca
Navajo Step-Pattern Choker, 2003
\$850

Dzinat'situwit'sa Wanda Aragon
(Acoma Pueblo)
Acoma Waterjar, 2004
\$3,000

Laurie Archer
Scissors, 2005
\$400

Laurie Archer
Marker Peel, 2005
\$400

Emanuela Aureli
Bimetal 1 + 2 Brooches, 2003–04
\$425 each

Karen Benjamin
Mountain Rhythm, 2004
\$2,100

Mary Bennett
A Little Light Reading Redux, 2005
\$4,000 per section (\$28,000 installation)

Autumn Borts (Santa Clara Pueblo)
Dragonfly's Dream, 2003
\$2,800

N. T. Brown
Horizon Series 1, 2005
\$1,500

Elizabeth J. Buckley
Portal, 2005
\$5,800

Carol Burns
*La Rèn Nan Bwa (The Queen in the
Woods [Haitian Creole])*, 2005
\$23,000

Barbara Campbell
Burst Seed Pod, Large Series, 2005
\$2,400

Paula Castillo
dos hermanas/dos árboles, 2005
\$9,000

Cristina Clarimón-Alinder
She Never Cares To Rest, 2005
\$200

Donna Loraine Contractor
Sierpinski Band, 2004
\$1,600

Anne Cooper
Frustrum iii-ix, 2005
\$2,000

Rachel Darnell
Labyrinth, 2004
\$3,000

Kawana L. Edwards
Guppies, Tramps & Thieves, 2004
\$260

Arjuna Estul
Dance with the One You Came With, 2004
\$900

Lisa Freeman
Diptych, 2005
\$950

Elizabeth Fritzsche
Good Intentions, 2005
\$3,000

Lydia Garcia
Reredo, 2005
\$1,400

Isabella Gonzales
Known Quantity, 2005
\$1,200

Judi Goolsby
*The Modern Maya:
San Juan Chamula*, 2005
\$4,200

Claire L. Haye
The Woman's Year, 2004
\$3,500

Teresa Henke
Kwan Yin, 2005
\$350

Linda Hunsaker
Our Little House: Crossover, 2004
\$300

Amanda Jaffe
Yellow Leaves VII, 2004
\$1,250

Jan Janas
Lamentation, 2005
\$900

McCreery L. Jordan
Only Child, 2005
\$950

Jennifer Joseph
Series 5000, 2005
\$3,600

Marietta P. Juanico (Acoma Pueblo)
Dancing Lizards, 2005
\$1,000

Suzanne Kane
Oratory, 2004
\$600

Martha Kennedy
Under Aqua Sky, 2005
\$1,800

New Mexico Committee for Women in the Arts

OFFICERS

Patrice Emrie, *Chair*
Adrienne Mielke, *Treasurer*
Nancy Neumann-Glasgow, *Recording Secretary*
Colleen Sullivan, *Corresponding Secretary*

BOARD OF DIRECTORS

Gail I. Bass
Susan Berk
Jane Buchsbaum, *Founding Member*
Marcia Cohen
Linda Comstock
Patrice Emrie
Lucile Leigh Grieder
Linda Johnson
Kristin Lora
Eleanor Macnish
Adrienne Mielke
Edwina Milner, *Founder*
Beej Nierengarten-Smith
Nancy Neumann-Glasgow
Barbara-rose Okun
Ann Quinn
Ernest Schwartz, *Founding Member*
Helene Singer, *Founding Member*
Carol Sky
Colleen Sullivan
Enid E. Tidwell
Shelby Tisdale

ADVISORS

First Lady Barbara Richardson, *Honorary Chair*
Charmay Allred
JoAnn Balzer
Mary Bennett
Kathleen Decker
Ruth Dillingham
Pamela McCorduck
Susan Hallsten McGarry
Shirley McNally
Ruth Schultz
Hilary Tompkins
Sheryl Tucker
Victoria Varley

Museum of New Mexico Board of Regents

Karen Durkovich, *President*
Thelma Domenici, *Vice-President*
Anita Ludovici De Domenico
Maria Estela De Rios
Michael Hurd
Charlotte Grey Jackson
Margaret Robson
Mike Stevenson

Department of Cultural Affairs

Stuart A. Ashman, *Secretary*
Bergit Salazar, *Deputy Secretary*

Museum of Fine Arts

Marsha C. Bol, Ph.D., *Director*
Mary Jebson, *Assistant Director*
Tim Rodgers, Ph.D., *Chief Curator*
Laura Addison, *Curator of Contemporary Art*
Arif Khan, *Curator of the Governor's Gallery*
Christine Mather, *Curator of the Collections*
Joseph Traugott, Ph.D., *Curator of 20th-Century Art*
Steve Yates, *Curator of Photography*
Ellen Zieselman, *Curator of Education*
Michael Abatemarco, *Sergeant of Security*
Theresa Garcia, *Administrator*
Tim Jag, *Preparator*
Martha Landry, *Special Events Coordinator*
Dominic Martinez, *Captain of Security*
Velma Rodriguez, *Secretary*
Bae Smith, *Librarian*
Joan Tafoya, *Registrar*
Frances Vigil-Jordan, *Financial Specialist*

