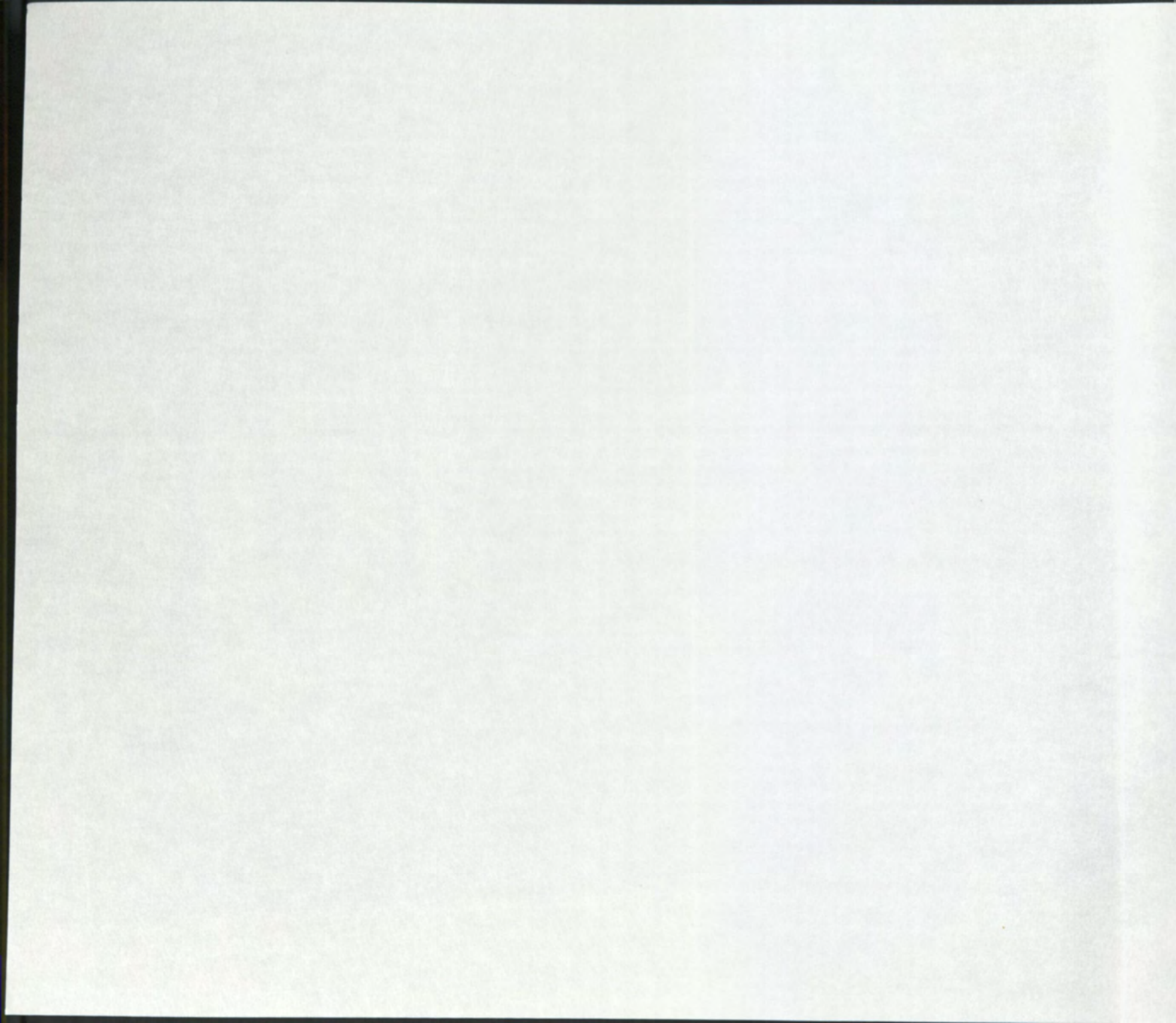
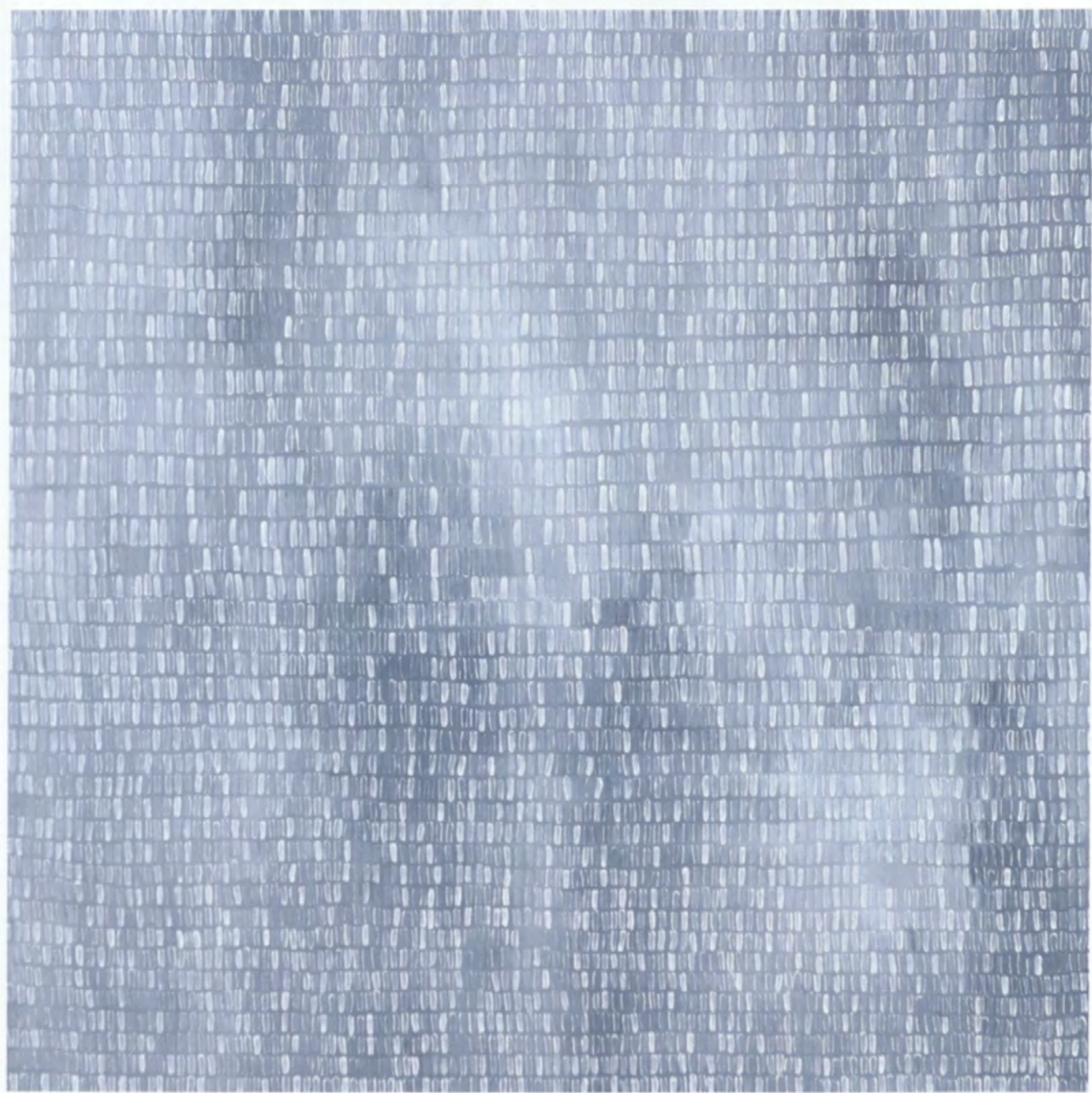


art on the

edge





Previous page:

Jill Christian, *Tranquil Sky*,
2011, oil on panel, 36 x 36 inches.
Collection of Michael Owens
and Wesley Taylor.

Art on the Edge 2015 was organized by Friends
of Contemporary Art+Photography, a support group
of the Museum of New Mexico Foundation, in partnership
with the New Mexico Museum of Art, a division of the
New Mexico Department of Cultural Affairs.
April 17–August 16, 2015

Copyright © 2015 Friends of Contemporary
Art+Photography, Museum of New Mexico Foundation.
All rights reserved. The individual artists
retain copyright of their respective images.

For inquiries about the exhibition:
New Mexico Museum of Art
P.O. Box 2087, Santa Fe, NM 87504
505-476-5041 www.nmartmuseum.org

For information about Friends of
Contemporary Art+Photography:
www.museumfoundation.org/FOCA

For catalogue orders:
www.blurb.com



New Mexico Museum of Art



NEW MEXICO DEPARTMENT OF
CULTURAL AFFAIRS

art on the

edge

arte

Jill Christian Will Clift Danae Falliers
Ian Fisher Sarah McKenzie Chris Oatey Kate Rivers

ton the

2015 JURIED SHOW

edge

Presented by Friends of Contemporary Art + Photography and the New Mexico Museum of Art
Juried by Nora Burnett Abrams April 17–August 16, 2015

ACKNOWLEDGMENTS

Organizing an exhibition of the caliber of *Art on the Edge 2015* was the result of a great deal of hard work by a dedicated group of individuals. Many factors, from the jurying process to final installation, required much thought and planning. As co-chairs of Friends of Contemporary Art+Photography (FOCA+P), we would like to thank those who devoted themselves to this project.

First and foremost we would like to recognize our guest juror Nora Burnett Abrams, curator at the Museum of Contemporary Art Denver, for her vision for *Art on the Edge 2015*. Her graciousness in taking on the project in the midst of a busy schedule and the thoughtfulness she showed in selecting the artists and their works are greatly appreciated.

A most sincere thank-you goes to Merry Scully, head of curatorial affairs at the New Mexico Museum of Art, for her expertise in working with artists, donors, exhibition designers, marketing and public relations staff, and preparators. Her professionalism and skill in coordinating all these elements are an invaluable part of making *Art on the Edge 2015* a great success. Many thanks also go to New Mexico Museum of Art Director Mary Kershaw, head of registration and collections

Michelle Gallagher-Roberts, museum preparator
Sam Rykels, graphic designer Monica Meehan, exhibition
designer Matt Celeskey, and Lorraine Rotunno for the
finesse she brings to all our events.

FOCA+P extends a special thanks to Lexus of Santa Fe
as the corporate sponsor of *Art on the Edge 2015*.
We would like to recognize our fellow steering committee
members who are instrumental in all our efforts: Nancy
Ziegler Nodelman; Dianna Sheffield; Ed Nolan; Rebecca
Lyon; Leslie Gallery Dilworth; and Barbara Blind.

Finally, we would like to thank all of the artists who
submitted their artwork. The quality of the submissions
has, once again, set the bar high for our guest curator
and helped guarantee *Art on the Edge 2015* as a first-
class exhibition.

Raymond Berger

Romi Sloboda

Co-chairs, Friends of Contemporary Art + Photography



Ian Fisher, *Atmosphere No. 61*
(*The Milvian Bridge*), 2014,
oil on canvas, 80 × 32 inches.
Courtesy of the artist
and Robischon Gallery.

JUROR STATEMENT

Surveying recent art from the region, *Art on the Edge* celebrates the myriad ways artists are working today. Painting, photography, collage, and sculpture are but a few highlights of these western artists' creative practices. Culled from nearly 300 submissions, the seven artists represented here demonstrate both a deep connection to their immediate environments, as well as a remove from the exigencies of daily life.

Taken together, the works indicate how these artists engage a rich diversity of approaches and a broad range of content to produce artworks that employ traditional techniques as much as they embrace the pace and spirit of contemporary life. Whether they are invigorating landscape photography or sky-scape painting — or even playing with color tonalities — the works on view make clear that these regional artists are pushing the boundaries of their chosen medium or subject matter and advancing the long-held notion of the West as a site of continual creative expansion and exploration.

Nora Burnett Abrams

Curator, MCA Denver

Kate Rivers, *Three Wise Virgins*,
2012, book spines on paper, 66 × 70 inches.
Courtesy of the artist.



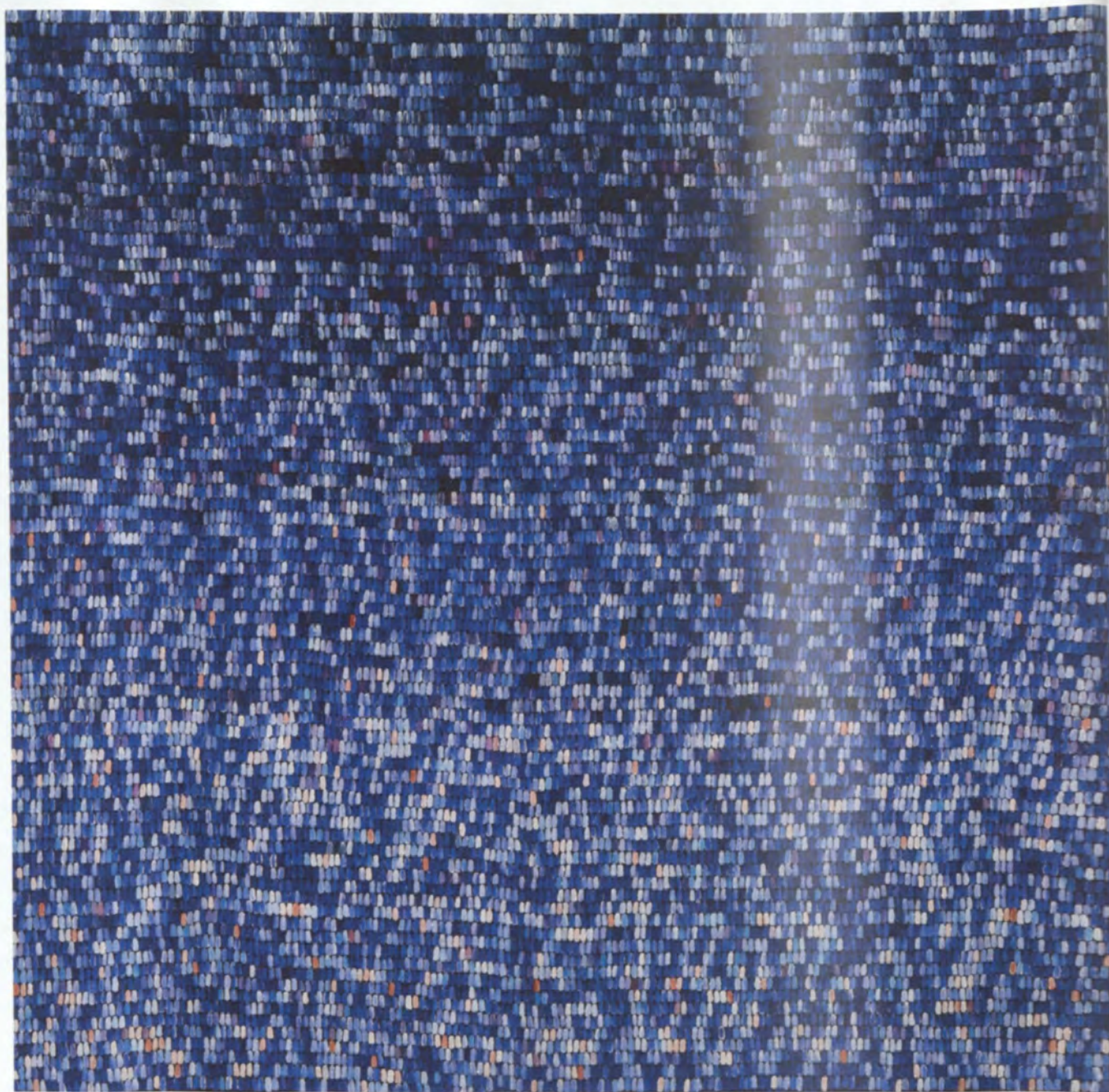
“I want to stand as close to the edge as I can without going over.

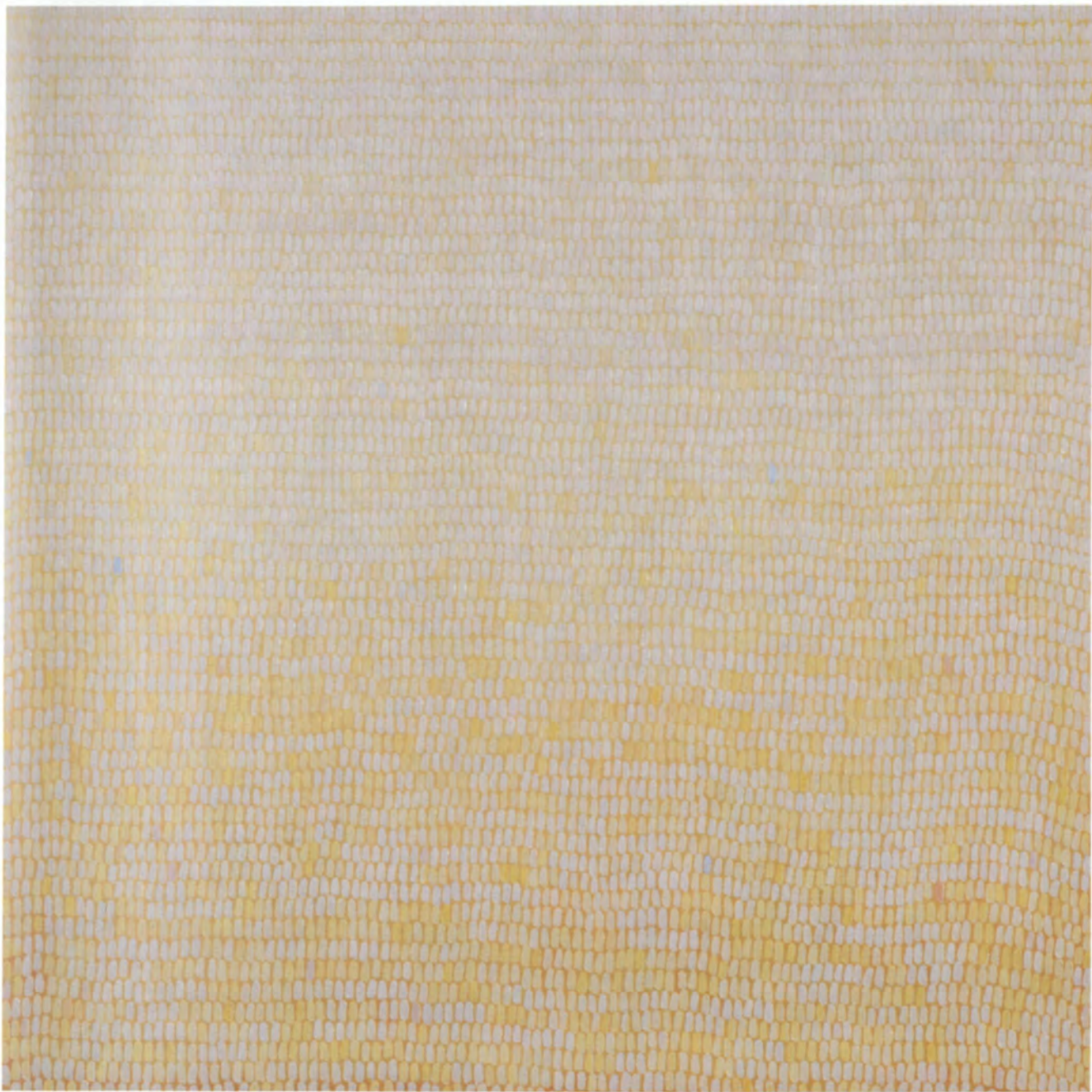
Out on the edge you see all the kinds of things you can’t see from the center.”

— Kurt Vonnegut (1922–2007)

JILL
CHRISTIAN

Nocturne, 2012, oil on canvas,
52 × 52 inches. Courtesy of
Matrix Fine Art.





Third Light, 2014, oil on panel,
20 x 20 inches. Courtesy of
Carrie Boeing.

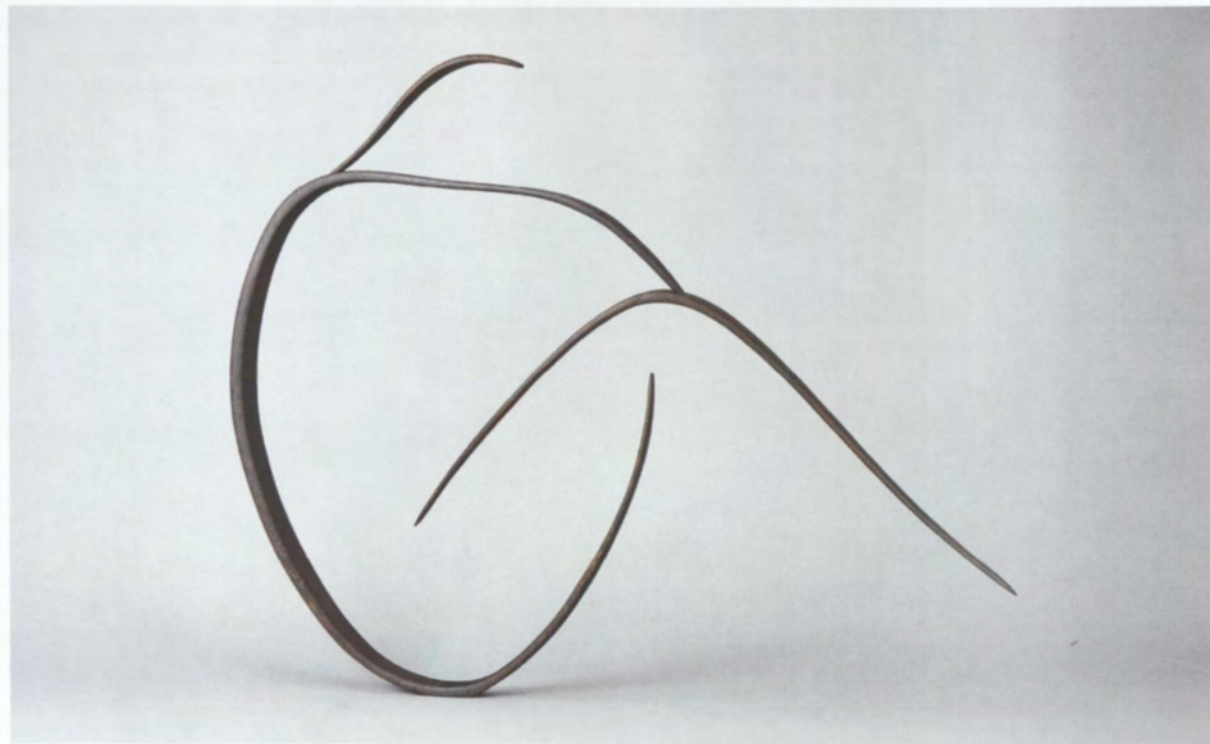
WILL
CLIFT

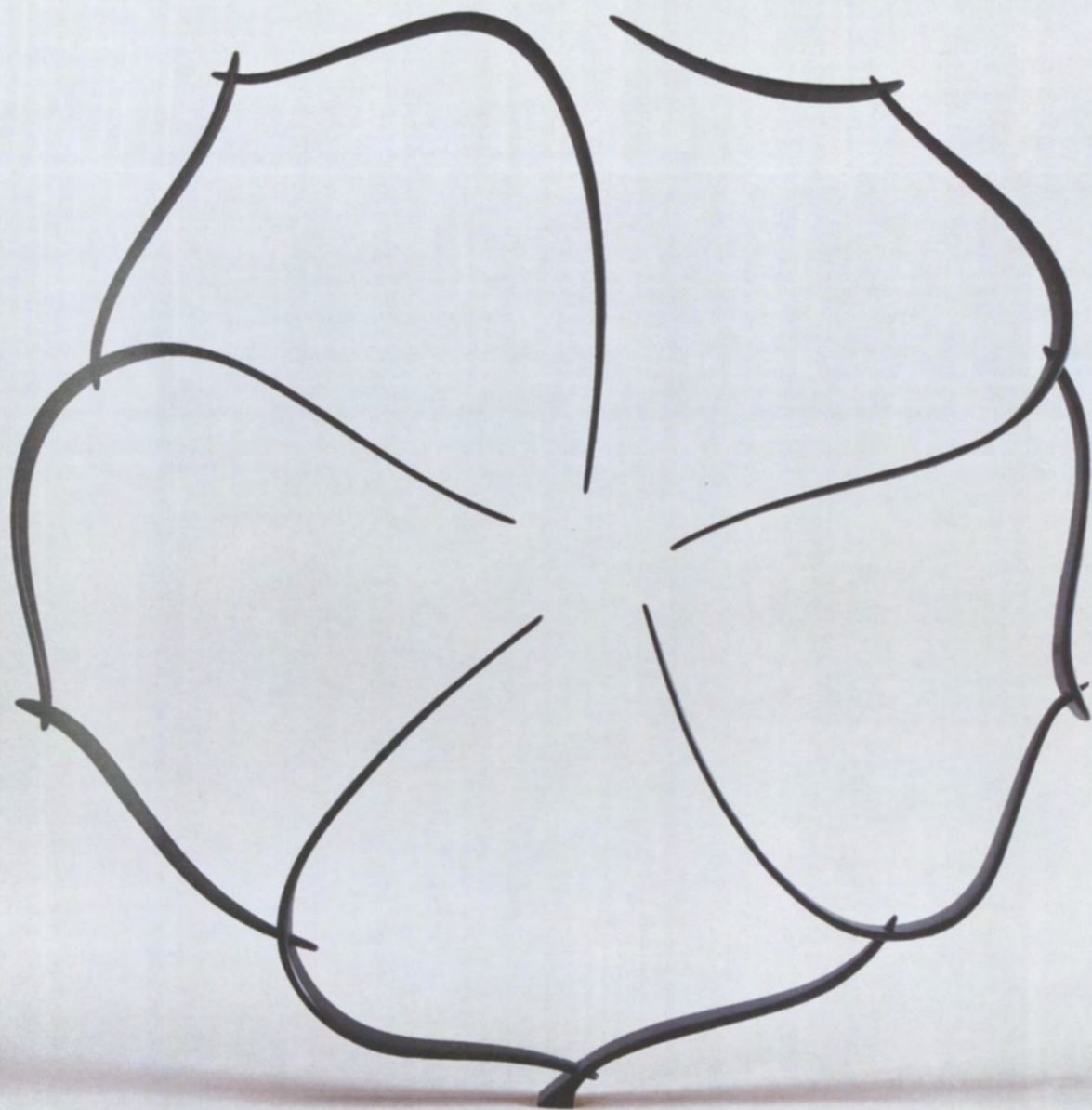


Diminishing Form, Horizontal,
2014, black walnut wood, 9 × 48
inches. Courtesy of Alice Duncan.

In and Over, 2014, wenge wood,
24 × 30 inches. Courtesy of
Andrew and Judith Kleinfeld.

Circular Form in Ten Pieces,
2014, hardwood, steel, and carbon
fiber composite, 50 × 48 inches.
Courtesy of Gerald Peters Gallery.

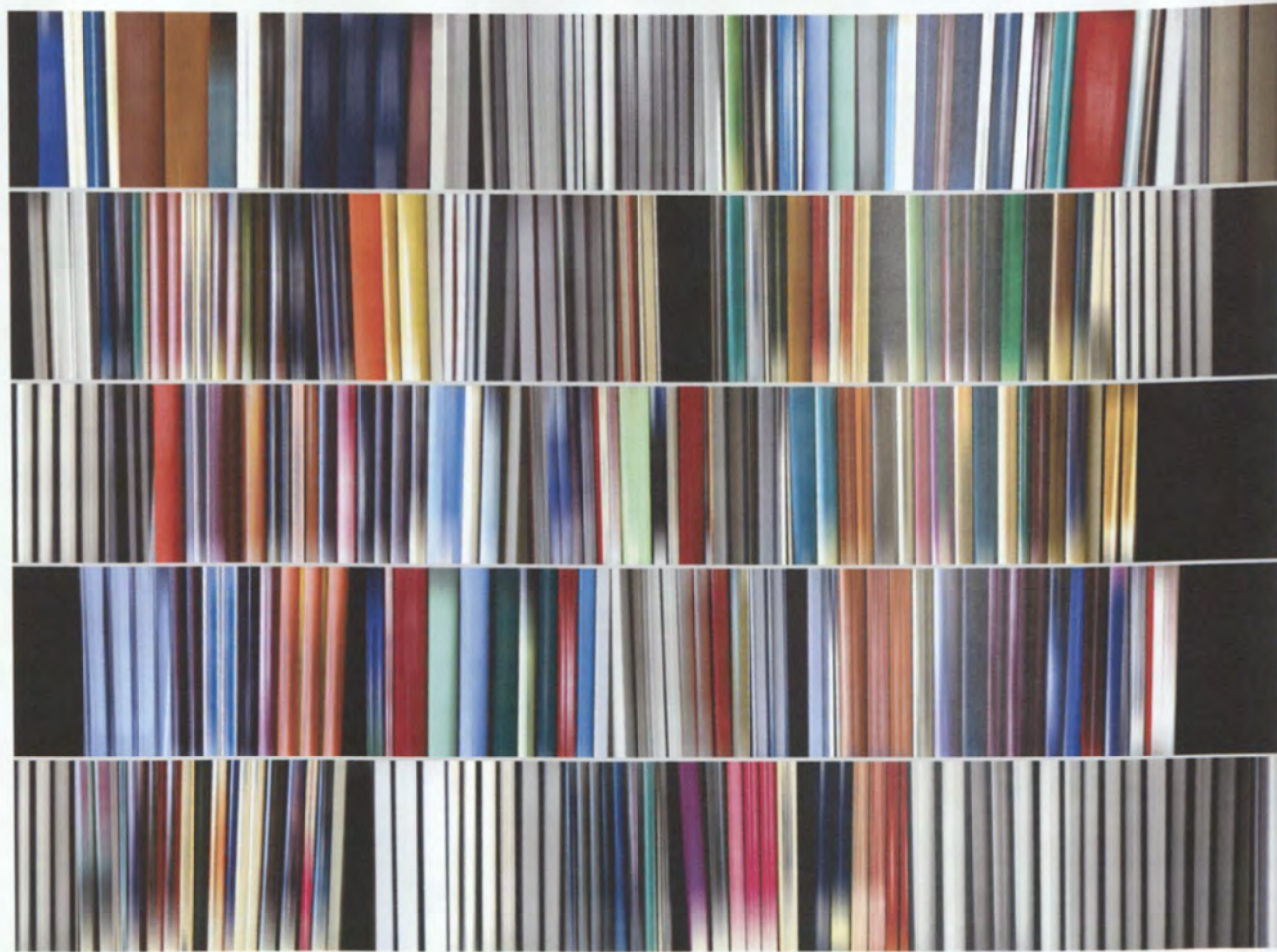




DANAE
FALLIERS

library70, 2014, photograph,
27 x 36 inches. Courtesy of
the artist and Craig Krull Gallery,
Santa Monica, CA.

library56, 2014, photograph,
27 x 36 inches. Courtesy of
the artist and Craig Krull Gallery,
Santa Monica, CA.









wildflower6, 2010, photograph,
27 x 36 inches. Courtesy of
the artist and Craig Krull Gallery,
Santa Monica, CA

highdesert5, 2014, photograph,
25 x 50 inches. Courtesy of the
artist and Craig Krull Gallery,
Santa Monica, CA.

IAN
FISHER



Atmosphere No.34, 2011, oil on
canvas, 72 × 72 inches. Courtesy
of the artist and Robischon Gallery.



Atmosphere No. 60, 2014, oil on canvas, 34 × 36 inches. Courtesy of the artist and Robischon Gallery.

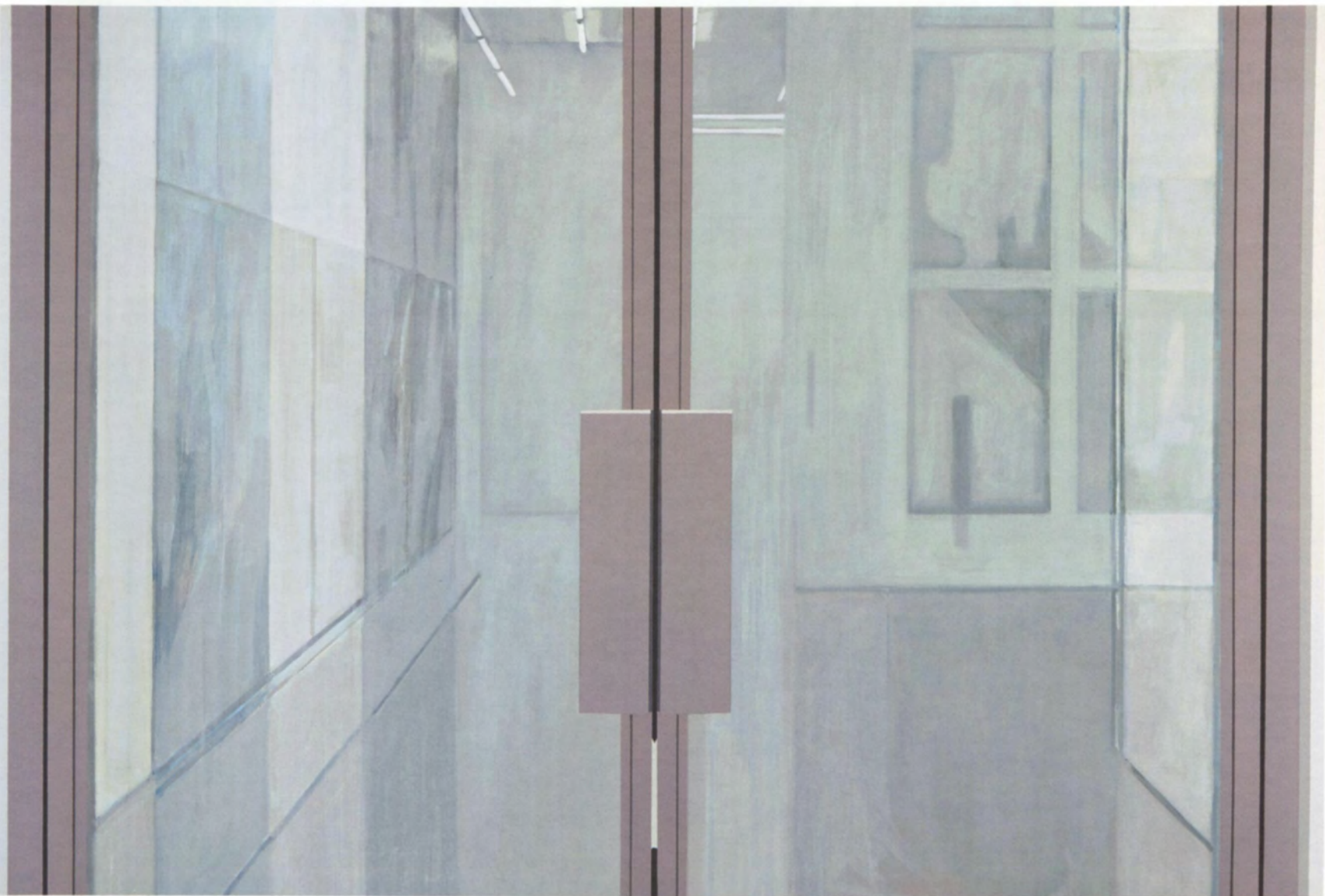
**SARAH
McKENZIE**



Frieze, 2014, oil and acrylic
on canvas, 60 x 60 inches.

Courtesy of the artist and
David B. Smith Gallery.

***Gate (White Cube, Bermondsey
with Mark Bradford, 2013)***,
2014, oil and acrylic on canvas,
42 x 63 inches. Courtesy of the
artist and David B. Smith Gallery.



Loop (White Cube, Bermondsey with Larry Bell, 2013), 2014,
oil and acrylic on canvas, 36 × 36
inches. Collection of Wood Huntley.

Waiting (White Cube, Bermondsey, 2013), 2014,
oil and acrylic on canvas, 24 × 32
inches. Courtesy of the artist
and David B. Smith Gallery.

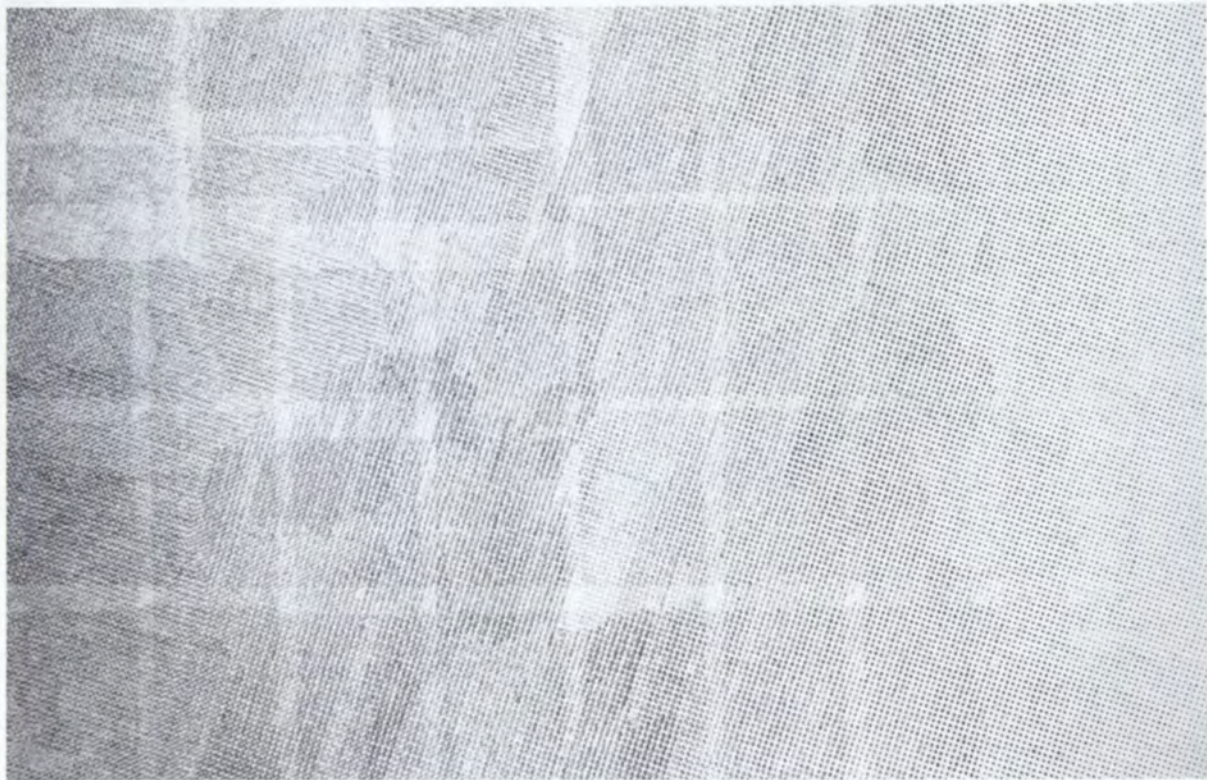




CHRIS
OATEY



Goldfish, 2010, carbon on paper,
55 x 45 inches. Courtesy of
CB1 Gallery.



Untitled, 2009, carbon on paper,
70 x 46 inches. Courtesy of
CB1 Gallery.

KATE
RIVERS

Buffalo, 2014, clothing tags
and mixed media on paper, 61 × 51
inches. Courtesy of the artist.





Mutiny, 2014, book covers and oil stick on paper, 63 × 48 inches.
Courtesy of the artist.

EXHIBITION CHECKLIST

Jill Christian

Nocturne, 2012
Oil on canvas
52 × 52 inches
Courtesy of Matrix Fine Art

Jill Christian

Third Light, 2014
Oil on panel
20 × 20 inches
Courtesy of Carrie Boeing

Jill Christian

Tranquil Sky, 2011
Oil on panel
36 × 36 inches
Collection of Michael Owens
and Wesley Taylor

Will Clift

Circular Form in Ten Pieces, 2014
Hardwood, steel,
and carbon fiber composite
50 × 48 inches
Courtesy of Gerald Peters Gallery

Will Clift

Diminishing Form, Horizontal, 2014
Black walnut wood
9 × 48 inches
Courtesy of Alice Duncan

Will Clift

In and Over, 2014
Wenge wood
24 × 30 inches
Courtesy of
Andrew and Judith Kleinfeld

Danae Falliers

highdesert5, 2014
Photograph
25 × 50 inches
Courtesy of the artist and
Craig Krull Gallery, Santa Monica, CA

Danae Falliers

library56, 2014
Photograph
27 × 36 inches
Courtesy of the artist and
Craig Krull Gallery, Santa Monica, CA

Danae Falliers

library70, 2014
Photograph
27 × 36 inches
Courtesy of the artist and
Craig Krull Gallery, Santa Monica, CA

Danae Falliers

wildflower6, 2010
Photograph
27 × 36 inches
Courtesy of the artist and
Craig Krull Gallery, Santa Monica, CA

Ian Fisher

Atmosphere No. 34, 2011
Oil on canvas
72 × 72 inches
Courtesy of the artist
and Robischon Gallery

Ian Fisher

Atmosphere No. 60, 2014
Oil on canvas
34 × 36 inches
Courtesy of the artist
and Robischon Gallery

Ian Fisher

Atmosphere No. 61
(*The Milvian Bridge*), 2014
Oil on canvas
80 × 32 inches
Courtesy of the artist
and Robischon Gallery

Sarah McKenzie

Frieze, 2014
Oil and acrylic on canvas
60 × 60 inches
Courtesy of the artist
and David B. Smith Gallery

Sarah McKenzie

Gate (White Cube, Bermondsey
with Mark Bradford, 2013), 2014
Oil and acrylic on canvas
42 × 63 inches
Courtesy of the artist
and David B. Smith Gallery

Sarah McKenzie

Loop (White Cube, Bermondsey
with Larry Bell, 2013), 2014
Oil and acrylic on canvas
36 × 36 inches
Collection of Wood Huntley

Sarah McKenzie

Waiting (White Cube, Bermondsey,
2013), 2014
Oil and acrylic on canvas
24 × 32 inches
Courtesy of the artist
and David B. Smith Gallery

Chris Oatey

Goldfish, 2010
Carbon on paper
55 × 45 inches
Courtesy of CB1 Gallery

Chris Oatey

Untitled, 2009
Carbon on paper
70 × 46 inches
Courtesy of CB1 Gallery

Kate Rivers

Buffalo, 2014
Clothing tags and mixed media
on paper
61 × 51 inches
Courtesy of the artist

Kate Rivers

Mutiny, 2014
Book covers and oil stick on paper
63 × 48 inches
Courtesy of the artist

Kate Rivers

Three Wise Virgins, 2012
Book spines on paper
66 × 70 inches
Courtesy of the artist



**ABOUT
THE JUROR**

Nora Burnett Abrams is curator at the Museum of Contemporary Art Denver. She has organized many exhibitions there, ranging from solo presentations of Paul Sietsema, Adrian Ghenie, Tatiana Blass, and Dario Robleto, to large-scale group exhibitions such as *Postscript: Writing After Conceptual Art* and *Another Victory Over the Sun*.

Prior to MCA Denver, she held positions at the Museum of Modern Art, The Metropolitan Museum of Art, and the Grey Art Gallery in New York City. She has taught art history at NYU and lectured widely on modern and contemporary art.



ABOUT THE NEW MEXICO MUSEUM OF ART

Art is for everyone. Since opening its doors in the heart of downtown Santa Fe in 1917, the New Mexico Museum of Art has been a catalyst and showcase for creativity and the enjoyment of art. Artists, learners and community members are empowered to think critically and see a multiplicity of meanings. We create authentic experiences that foster a deeper understanding and enjoyment of art throughout the state. We work with art and artists to explore the human experience, new ideas, and diverse cultures. We bring the art of the world to New Mexico and the art of New Mexico to the world.

The New Mexico Museum of Art is a division of the New Mexico Department of Cultural Affairs.

Staff

Mary J. Kershaw *Director*
Anjala Coughlin *Financial Specialist*
George Espinosa *Sergeant of Security*
Michelle Gallagher-Roberts
Head of Registration and Collections
Martha Landry *Events Manager*
Jolene Lockhart *Executive Assistant*
Dominic Martinez *Captain of Security*
Rebecca Potance *Librarian*
Erica Prater *Collections Manager*
Lorraine Rotunno
Special Events and Visitors Coordinator
Sam Rykels *Preparator*
Merry Scully *Head of Curatorial Affairs*
Carmen Vendelin *Curator of Art*
Katherine Ware *Curator of Photography*

Friends of Contemporary

Art+Photography (FOCA+P) works actively as an advocate for contemporary art and photography by supporting exhibitions at the New Mexico Museum of Art, helping the museum acquire exciting works of art, sponsoring visiting speakers from the contemporary art world and by organizing events and studio tours to generate dialogue between artists and members. FOCA+P offers eight member events each year, where members enjoy educational and cultural programs within social settings. In addition to the artwork FOCA+P has contributed to New Mexico Museum of Art's permanent collection, it has also helped sponsor numerous museum exhibitions.

FOCA+P Steering Committee

Raymond Berger *Co-chair*

Romi Sloboda *Co-chair*

Barbara Blind

Leslie Gallery Dilworth

Rebecca Lyon

Nancy Ziegler Nodelman

Ed Nolan

Dianna Sheffield

ABOUT FRIENDS OF CONTEMPORARY ART + PHOTOGRAPHY